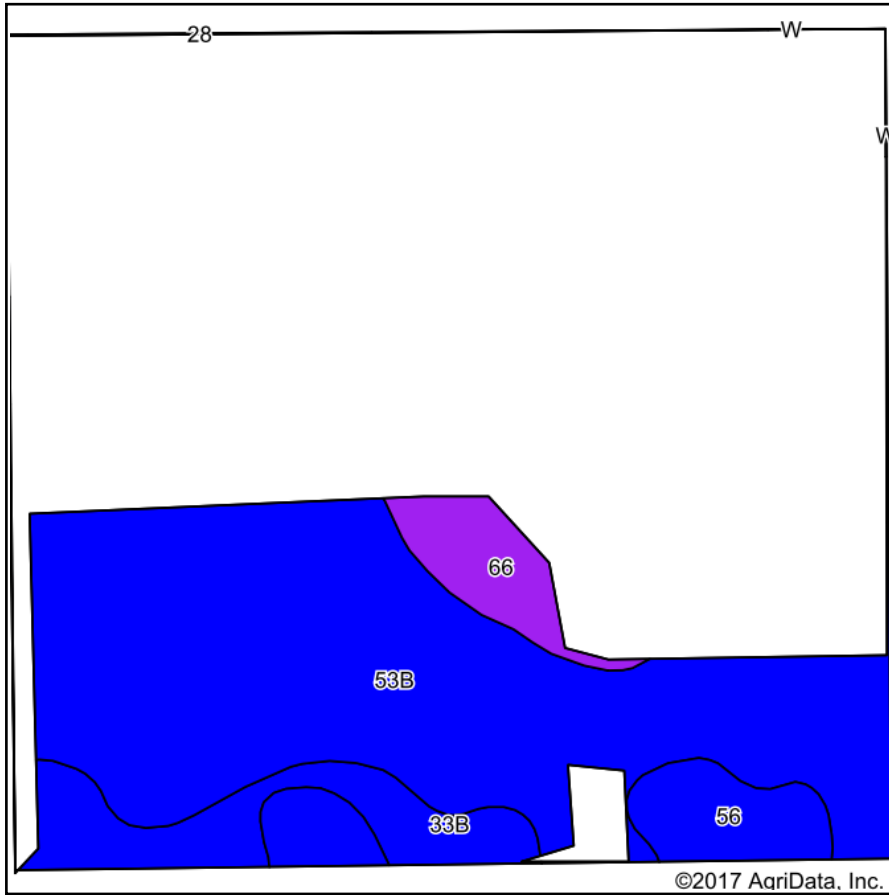
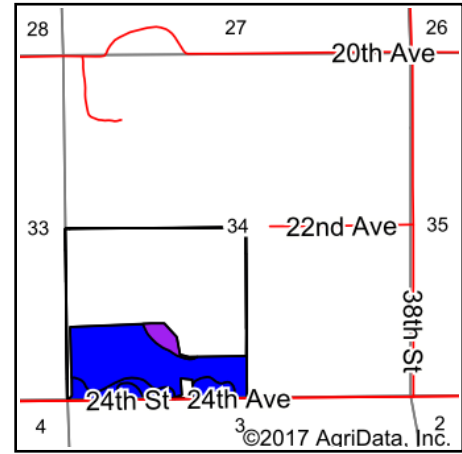


# Soils Map



Soils data provided by USDA and NRCS.

©2017 AgriData, Inc.



State: **Michigan**  
 County: **Van Buren**  
 Location: **34-1S-14W**  
 Township: **Bloomingdale**  
 Acres: **57.2**  
 Date: **9/27/2017**



Maps Provided By:



© AgriData, Inc. 2017

www.AgriDataInc.com



## Area Symbol: MI159, Soil Area Version: 12

Code	Soil Description	Acres	Percent of field	Non-Irr Class Legend	Water Table	Restrictive Layer	Soil Drainage	Non-Irr Class *c	Corn	Soybeans	Winter wheat
53B	Capac loam, 0 to 4 percent slopes	41.03	71.7%		1.5ft.	> 6.5ft.	Somewhat poorly drained	Ile			
33B	Tuscola silt loam, 0 to 4 percent slopes	6.69	11.7%		1.5ft.	> 6.5ft.	Moderately well drained	Ile	100	32	47
56	Pewamo silty clay loam	5.48	9.6%		0ft.	> 6.5ft.	Poorly drained	Ilw	130	42	60
66	Alganssee-Cohoctah complex	3.87	6.8%		1.5ft.	> 6.5ft.	Somewhat poorly drained	Vw			
28	Houghton muck, 0 to 1 percent slopes	0.13	0.2%		0ft.	> 6.5ft.	Very poorly drained	Vw			
<b>Weighted Average</b>									<b>24.2</b>	<b>7.8</b>	<b>11.2</b>

\*c: Using Capabilities Class Dominant Condition Aggregation Method

Soils data provided by USDA and NRCS.