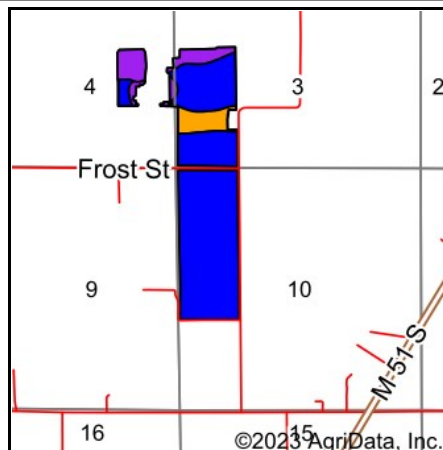
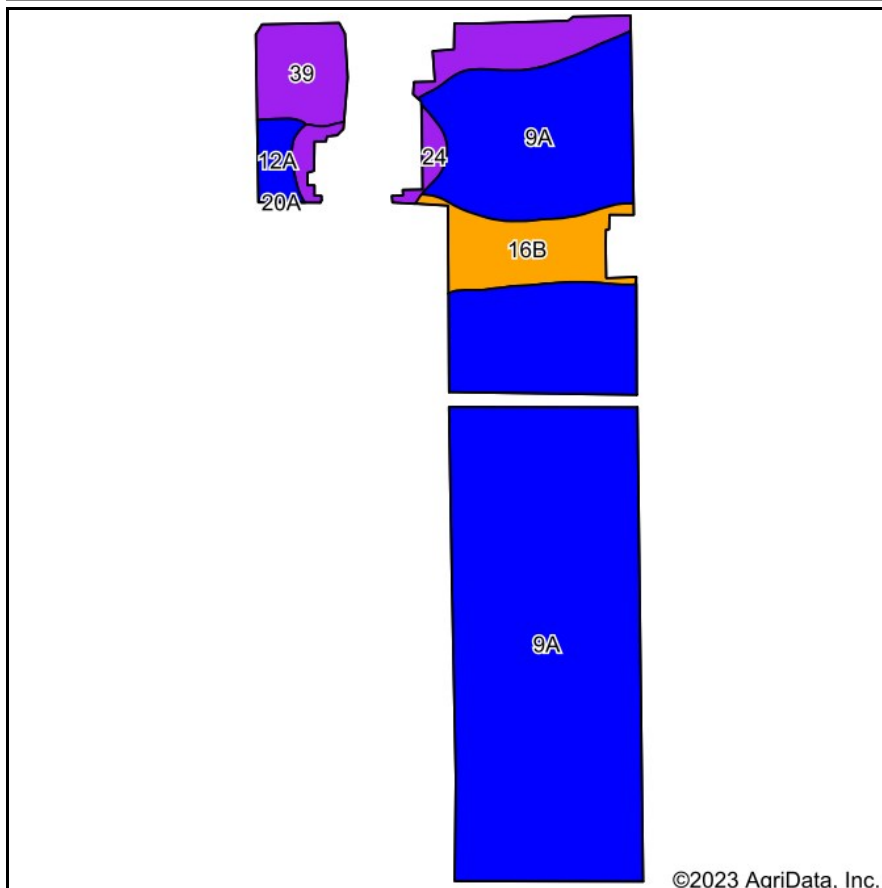


Soils Map



State: **Michigan**
 County: **Cass**
 Location: **10-6S-16W**
 Township: **Pokagon**
 Acres: **187.36**
 Date: **3/21/2023**



Maps Provided By:



Soils data provided by USDA and NRCS.

Archived Soils Ending 1/21/2012

Code	Soil Description	Acres	Percent of field	Non-Irr Class Legend	Water Table	Restrictive Layer	Soil Drainage	Non-Irr Class *c	Irr Class *c	Corn Bu	Corn Irrigated Bu	Soybeans Bu	Soybeans Irrigated Bu	Winter wheat Bu
9A	Kalamazoo loam, 0 to 2 percent slopes	149.48	79.8%		> 6.5ft.	> 6.5ft.	Well drained	lls	lls	110	175	30	55	40
39	Cohoctah loam	17.94	9.6%		0ft.	> 6.5ft.	Very poorly drained	V w						
16B	Ormas loamy sand, 0 to 6 percent slopes	12.69	6.8%		> 6.5ft.	> 6.5ft.	Well drained	lle		80		28		36
24	Adrian muck	3.80	2.0%		0ft.	> 6.5ft.	Very poorly drained	V w						
12A	Brady sandy loam, 0 to 2 percent slopes	3.45	1.8%		0.5ft.	> 6.5ft.	Somewhat poorly drained	llw		115		33		50
Weighted Average								2.42	*-	95.3	139.6	26.4	43.9	35.3

*c: Using Capabilities Class Dominant Condition Aggregation Method

*- Irr Class weighted average cannot be calculated on the current soils data due to missing data.