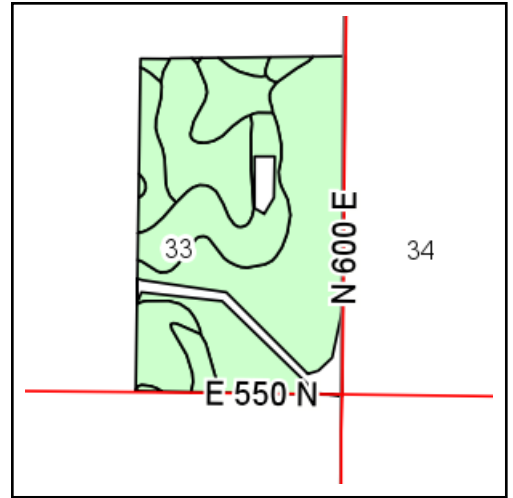
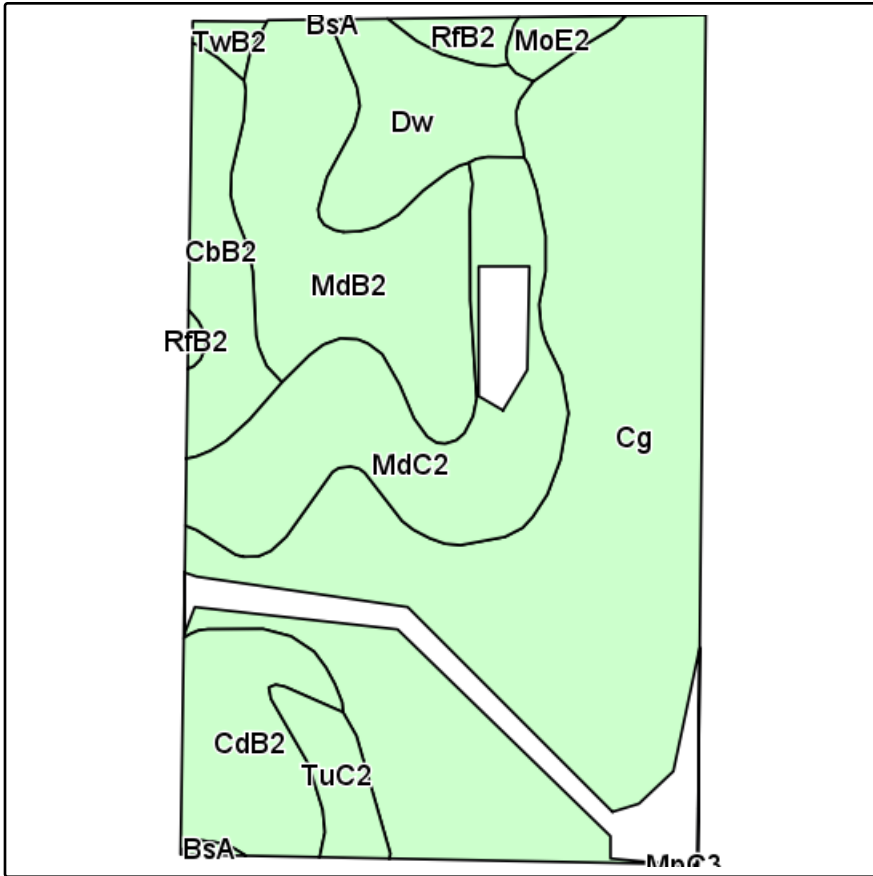
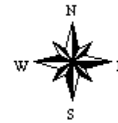


# Soils Map



State: **Indiana**  
 County: **Warren**  
 Location: **33-23N-7W**  
 Township: **Adams**  
 Acres: **60.92**  
 Date: **10/31/2013**

Field borders provided by Farm Service Agency as of 5/21/2008.  
Soils data provided by USDA and NRCS.



Maps provided by:



©AgriData, Inc 2013  
www.AgriDataInc.com

Code	Soil Description	Acres	Percent of field	Non-Irr Class	Corn	Soybeans	Winter wheat
Cg	Comfrey loam, stratified substratum, rarely flooded	28.91	47.5%	IIw	180	44	72
MdC2	Martinsville loam, 6 to 12 percent slopes, eroded	8.63	14.2%	IIIe	130	46	65
MdB2	Martinsville loam, 2 to 6 percent slopes, eroded	8.53	14.0%	Ile	140	49	70
CdB2	Camden silt loam, till substratum, 2 to 6 percent slopes, eroded	4.22	6.9%	Ile	150	53	75
Dw	Drummer silty clay loams	3.95	6.5%	IIw	175	49	70
CbB2	Camden silt loam, 2 to 6 percent slopes, eroded	3.31	5.4%	Ile	150	53	75
TuC2	Tuscola loam, till substratum, 6 to 12 percent slopes, eroded	1.46	2.4%	IIIe	130	46	59
RfB2	Rainsville-Williamstown-Rockfield silt loams, 2 to 6 percent slopes, eroded	0.73	1.2%	Ile	142	50	64
MoE2	Miami loam, 15 to 25 percent slopes, eroded	0.66	1.1%	VIe			
TwB2	Tuscola silt loam, till substratum, 2 to 6 percent slopes, eroded	0.39	0.6%	Ile	140	49	63
BsA	Brenton silt loam, till substratum, 0 to 2 percent slopes	0.13	0.2%	IIw	175	54	79
<b>Weighted Average</b>					<b>159.4</b>	<b>46.1</b>	<b>69.7</b>