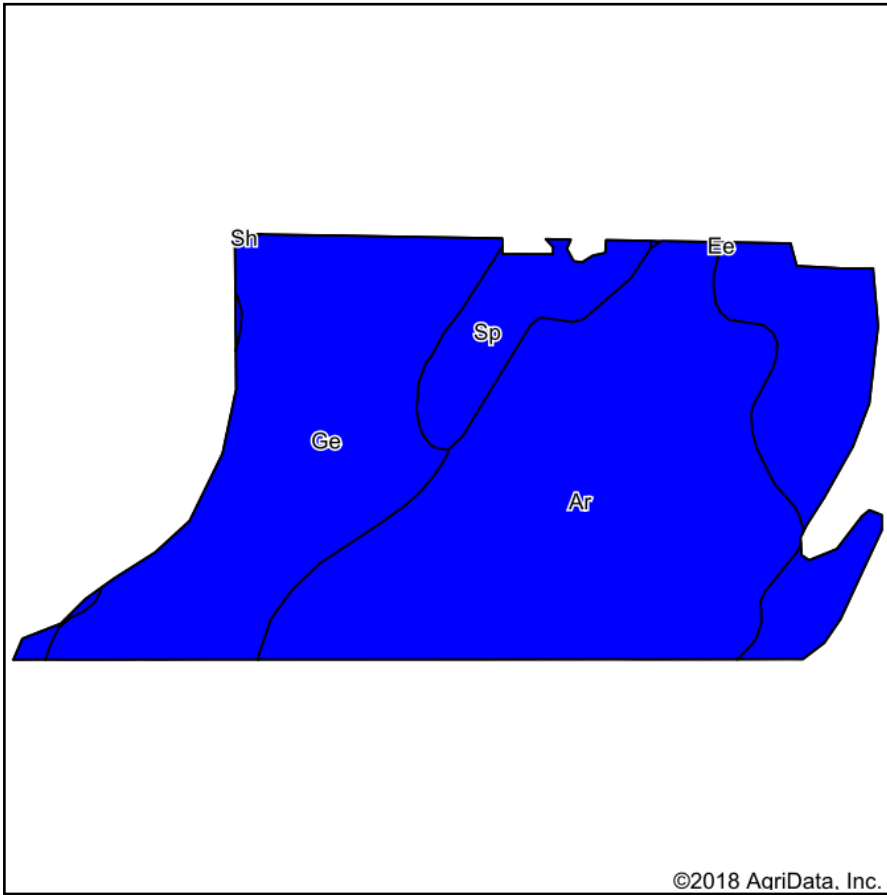
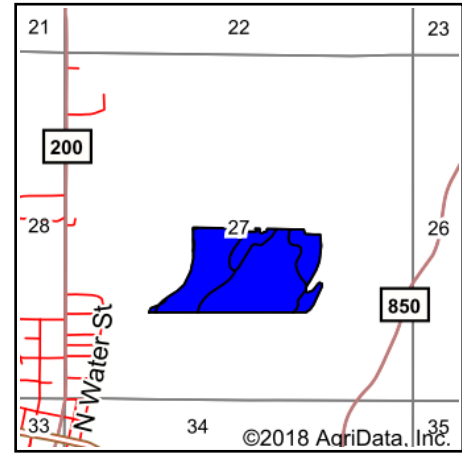


# Soils Map



Soils data provided by USDA and NRCS.



State: **Indiana**  
 County: **Vermillion**  
 Location: **27-19N-9W**  
 Township: **Highland**  
 Acres: **59.05**  
 Date: **7/19/2018**



Maps Provided By:



**Area Symbol: IN165, Soil Area Version: 18**

| Code                    | Soil Description           | Acres | Percent of field | Non-Irr Class Legend | Non-Irr Class *c | Soybeans    | Corn         | NCCPI Overall |
|-------------------------|----------------------------|-------|------------------|----------------------|------------------|-------------|--------------|---------------|
| Ar                      | Armiesburg silty clay loam | 28.49 | 48.2%            |                      | Ilw              | 41          | 126          | 73            |
| Ge                      | Genesee silt loam          | 26.57 | 45.0%            |                      | Ilw              | 41          | 116          | 72            |
| Sp                      | Stonelick sandy loam       | 3.99  | 6.8%             |                      | Ilw              | 28          | 80           | 40            |
| <b>Weighted Average</b> |                            |       |                  |                      |                  | <b>40.1</b> | <b>118.4</b> | <b>70.3</b>   |

\*c: Using Capabilities Class Dominant Condition Aggregation Method

Soils data provided by USDA and NRCS.