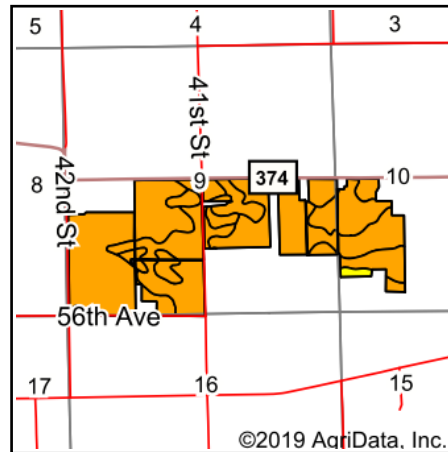


# Soils Map



State: **Michigan**  
 County: **Van Buren**  
 Location: **9-3S-14W**  
 Township: **Paw Paw**  
 Acres: **269.02**  
 Date: **1/15/2020**



Soils data provided by USDA and NRCS.

Archived Soils Ending 2/5/2014														
Code	Soil Description	Acres	Percent of field	Non-Irr Class Legend	Water Table	Restrictive Layer	Soil Drainage	Non-Irr Class *c	Irr Class *c	Cor n	Corn Irrigated	Soybeans	Soybeans Irrigated	Winter wheat
20B	Spinks loamy sand, 0 to 6 percent slopes	130.11	48.4%		0ft.	> 6.5ft.	Well drained	IIIs	IIIs	75	165	27	50	30
18B	Ormas loamy sand, 0 to 6 percent slopes	73.33	27.3%		> 6.5ft.	> 6.5ft.	Well drained	IIIe		80		28		36
6B	Oshtemo sandy loam, 0 to 6 percent slopes	52.30	19.4%		> 6.5ft.	> 6.5ft.	Well drained	IIIs	IIIe	95	175	30	57	45
18C	Ormas loamy sand, 6 to 12 percent slopes	7.38	2.7%		> 6.5ft.	> 6.5ft.	Well drained	IIIe		70		24		32
6C	Oshtemo sandy loam, 6 to 12 percent slopes	3.61	1.3%		> 6.5ft.	> 6.5ft.	Well drained	IIIe	IIIe	90	165	26	50	40
51	Kingsville loamy sand	2.29	0.9%		0ft.	> 6.5ft.	Poorly drained	IVw		75		25		30
<b>Weighted Average</b>										<b>80.3</b>	<b>116</b>	<b>27.7</b>	<b>35.9</b>	<b>34.7</b>

\*c: Using Capabilities Class Dominant Condition Aggregation Method  
 Soils data provided by USDA and NRCS.