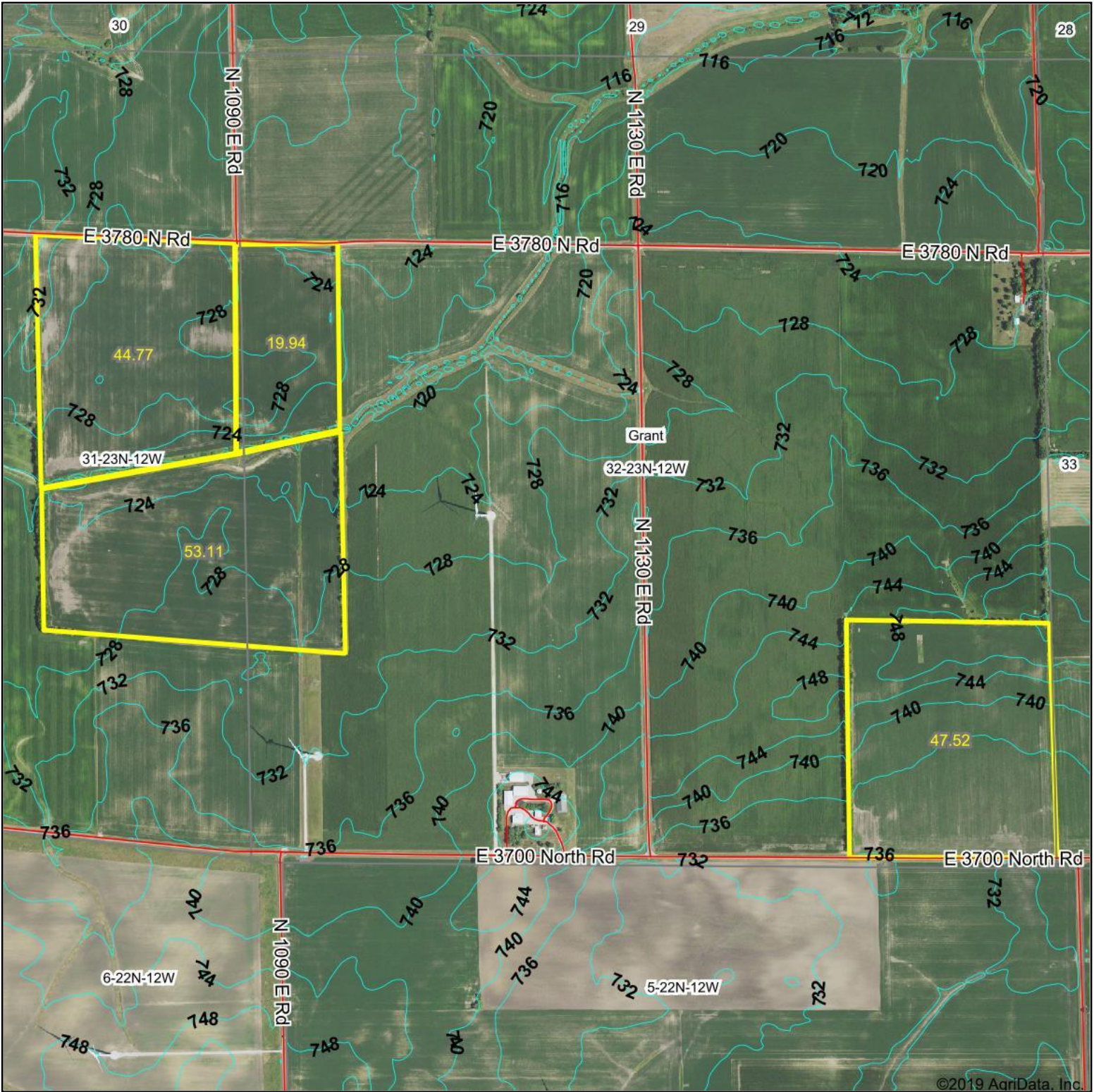


# Topography Contours



©2019 AgriData, Inc.



© AgriData, Inc. 2019 www.AgriDataInc.com

Source: USGS 10 meter dem

Interval: 4.0

Min: 721.2

Max: 748.0

Range: 26.8

Average: 730.7

Standard Deviation: 6.07

0ft 1014ft 2028ft



3/9/2020

**32-23N-12W**  
**Vermilion County**  
**Illinois**

Map Center: 40° 24' 20.96, -87° 44' 10.43