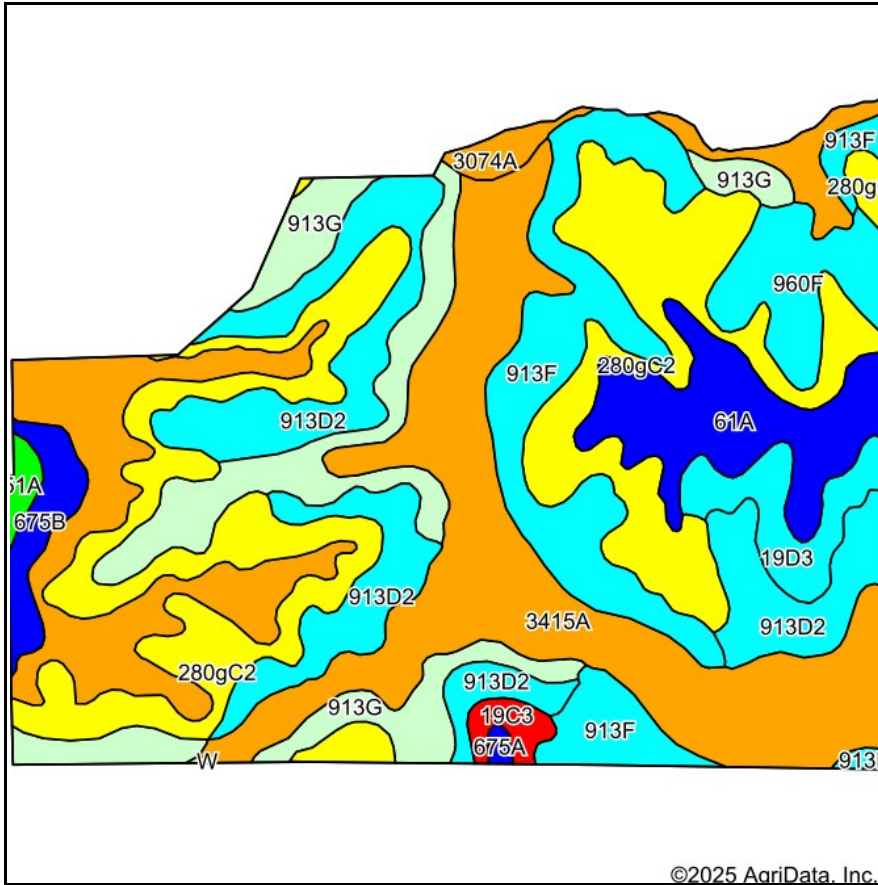
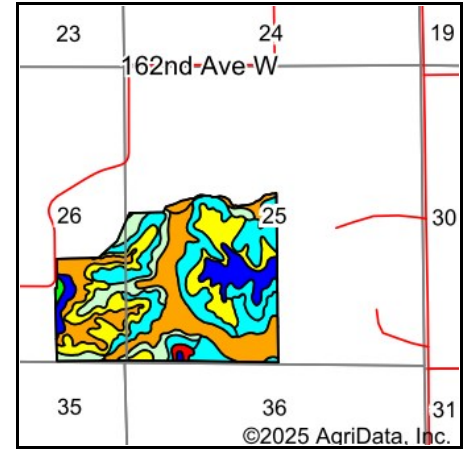


Soils Map



Soils data provided by USDA and NRCS.



State: **Illinois**
 County: **Rock Island**
 Location: **25-16N-4W**
 Township: **Buffalo Prairie**
 Acres: **227.14**
 Date: **5/12/2025**



Maps Provided By:

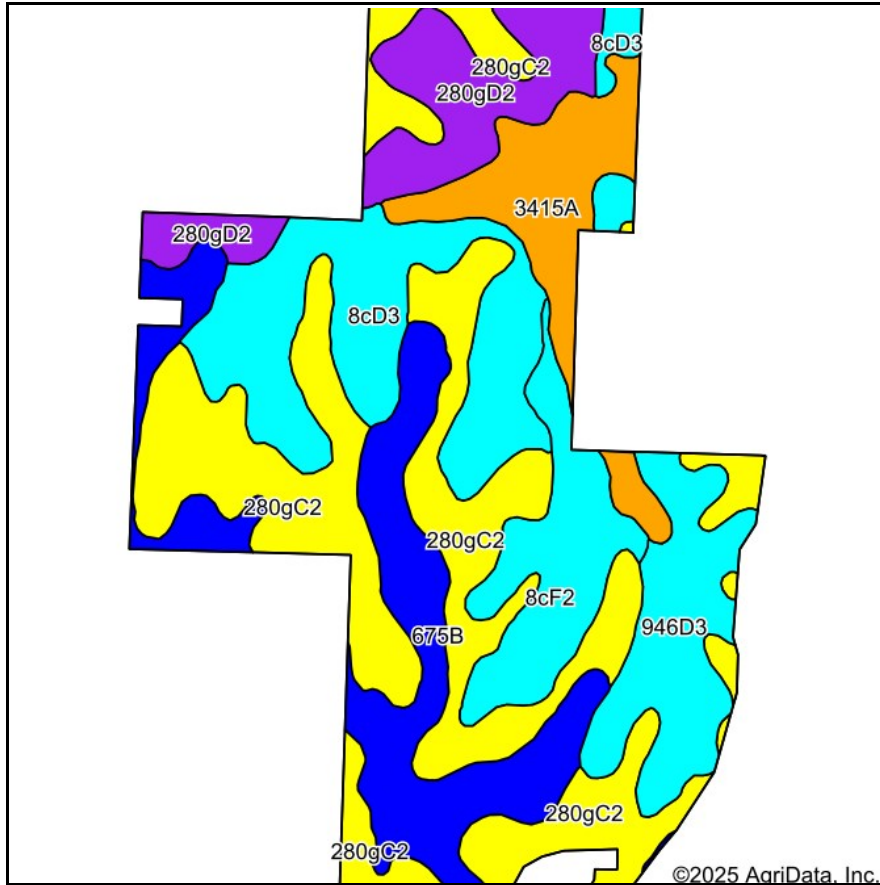


Area Symbol: IL161, Soil Area Version: 20

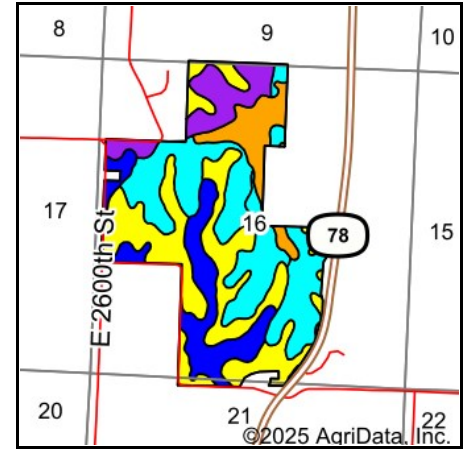
Code	Soil Description	Acres	Percent of field	Il. State Productivity Index Legend	Subsoil rooting <i>a</i>	Corn Bu/A	Soybeans Bu/A	Wheat Bu/A	Oats Bu/A <i>b</i>	Sorghum <i>c</i> Bu/A	Grass-legume <i>e</i> hay, T/A	Crop productivity index for optimum management	*n NCCPI Corn	*n NCCPI Soybeans
**280gC2	Fayette silt loam, glaciated, 5 to 10 percent slopes, eroded	48.81	21.6%		FAV	**155	**49	**61	**79	0	**5.00	**113	84	66
**3415A	Orion silt loam, 0 to 2 percent slopes, frequently flooded	41.63	18.3%		FAV	**162	**51	**59	**80	0	**5.00	**118	88	82
**913D2	Marseilles-Hickory silt loams, 10 to 18 percent slopes, eroded	29.55	13.0%		UNF	**113	**38	**46	**57	0	**3.00	**85	60	44
**913F	Marseilles-Hickory silt loams, 18 to 35 percent slopes	23.96	10.5%		UNF	**97	**32	**39	**48	0	**3.00	**74	18	8

Code	Soil Description	Acres	Percent of field	II. State Productivity Index Legend	Subsoil rooting a	Corn Bu/A	Soybeans Bu/A	Wheat Bu/A	Oats Bu/A b	Sorghum c Bu/A	Grass- legume e hay, T/A	Crop productivity index for optimum management	*n NCCPI Corn	*n NCCPI Soybeans
**913G	Marseilles-Hickory silt loams, 35 to 60 percent slopes	23.58	10.4%		UNF	**61	**21	**26	**30	0	**2.00	**45	25	16
**280B	Fayette silt loam, glaciated, 2 to 5 percent slopes	18.94	8.3%		FAV	**164	**52	**65	**83	0	**5.00	**120	89	78
61A	Atterberry silt loam, 0 to 2 percent slopes	13.91	6.1%		FAV	182	56	71	98	0	6.00	132	84	79
**960F	Hickory-Sylvan-Fayette silt loams, 18 to 30 percent slopes	8.34	3.7%		FAV	**104	**34	**41	**49	0	**3.00	**77	20	10
**19D3	Sylvan silty clay loam, 10 to 18 percent slopes, severely eroded	6.24	2.7%		FAV	**118	**39	**47	**55	0	**3.00	**87	68	56
**3074A	Radford silt loam, 0 to 2 percent slopes, frequently flooded	5.08	2.2%		FAV	**167	**52	**66	**89	0	**5.00	**122	71	66
**675B	Greenbush silt loam, 2 to 5 percent slopes	3.87	1.7%		FAV	**180	**57	**69	**95	0	**5.00	**131	91	75
**19C3	Sylvan silty clay loam, 5 to 10 percent slopes, severely eroded	1.75	0.8%		FAV	**128	**42	**51	**59	0	**3.00	**95	76	61
51A	Muscataune silt loam, 0 to 2 percent slopes	1.10	0.5%		FAV	200	64	75	104	138	6.00	147	95	79
675A	Greenbush silt loam, 0 to 2 percent slopes	0.38	0.2%		FAV	184	58	70	97	0	5.00	134	90	76
Weighted Average						135.2	43.3	52.8	68.2	0.7	4.1	99.4	*n 66	*n 54.4

Soils Map



Soils data provided by USDA and NRCS.



State: **Illinois**
 County: **Henry**
 Location: **16-15N-5E**
 Township: **Kewanee**
 Acres: **291.67**
 Date: **6/12/2025**



Maps Provided By:



Area Symbol: IL073, Soil Area Version: 22

Code	Soil Description	Acres	Percent of field	Il. State Productivity Index Legend	Subsoil rooting <i>a</i>	Corn Bu/A	Soybeans Bu/A	Wheat Bu/A	Oats Bu/A <i>b</i>	Sorghum <i>c</i> Bu/A	Grass- legume <i>e</i> hay, T/A	Crop productivity index for optimum management	*n NCCPI Corn	*n NCCPI Soybeans
**280gC2	Fayette silt loam, glaciated, 5 to 10 percent slopes, eroded	95.99	33.0%		FAV	**155	**49	**61	**79	0	**5.00	**113	84	66
**8cD3	Hickory clay loam, cool mesic, 10 to 18 percent slopes, severely eroded	46.99	16.1%		FAV	**93	**32	**38	**43	0	**3.00	**71	65	49
**675B	Greenbush silt loam, 2 to 5 percent slopes	46.33	15.9%		FAV	**180	**57	**69	**95	0	**5.00	**131	91	75
**946D3	Hickory-Atlas complex, 10 to 18 percent slopes, severely eroded	27.81	9.5%		FAV	**86	**30	**34	**39	0	**3.00	**66	56	39

Code	Soil Description	Acres	Percent of field	Il. State Productivity Index Legend	Subsoil rooting a	Corn Bu/A	Soybeans Bu/A	Wheat Bu/A	Oats Bu/A b	Sorghum c Bu/A	Grass-legume e hay, T/A	Crop productivity index for optimum management	*n NCCPI Corn	*n NCCPI Soybeans
**280gD2	Fayette silt loam, glaciated, 10 to 18 percent slopes, eroded	26.89	9.2%		FAV	**145	**46	**57	**74	0	**5.00	**106	73	60
**3415A	Orion silt loam, 0 to 2 percent slopes, frequently flooded	24.23	8.3%		FAV	**162	**51	**59	**80	0	**5.00	**118	88	82
**8cF2	Hickory silt loam, cool mesic, 18 to 35 percent slopes, eroded	23.43	8.0%		FAV	**82	**28	**34	**38	0	**3.00	**63	22	12
Weighted Average						136.2	43.9	53.3	68.3	*-	4.3	100.4	*n 73.7	*n 58.6

Soil data provided by USDA and NCCS. Soil data provided by University of Illinois at Urbana-Champaign.

Table: Optimum Crop Productivity Ratings for Illinois Soil EFOTG are sourced from Bulletin 811 calculated Map Unit Base Yield Indices, and adjusted (Adj) for slope, erosion, flooding, and surface texture. Publication Date: 01-28-2025

Crop yields and productivity (B811 EFOTG) are maintained at the following USDA web site: 2023 Illinois Soil Productivity and Yield Indices: <https://efotg.sc.egov.usda.gov/#/state/IL/documents/section=2&folder=52809>

** Base indexes from Bulletin 811 adjusted for slope, erosion, flooding, and surface texture according to the Il. Soils EFOTG

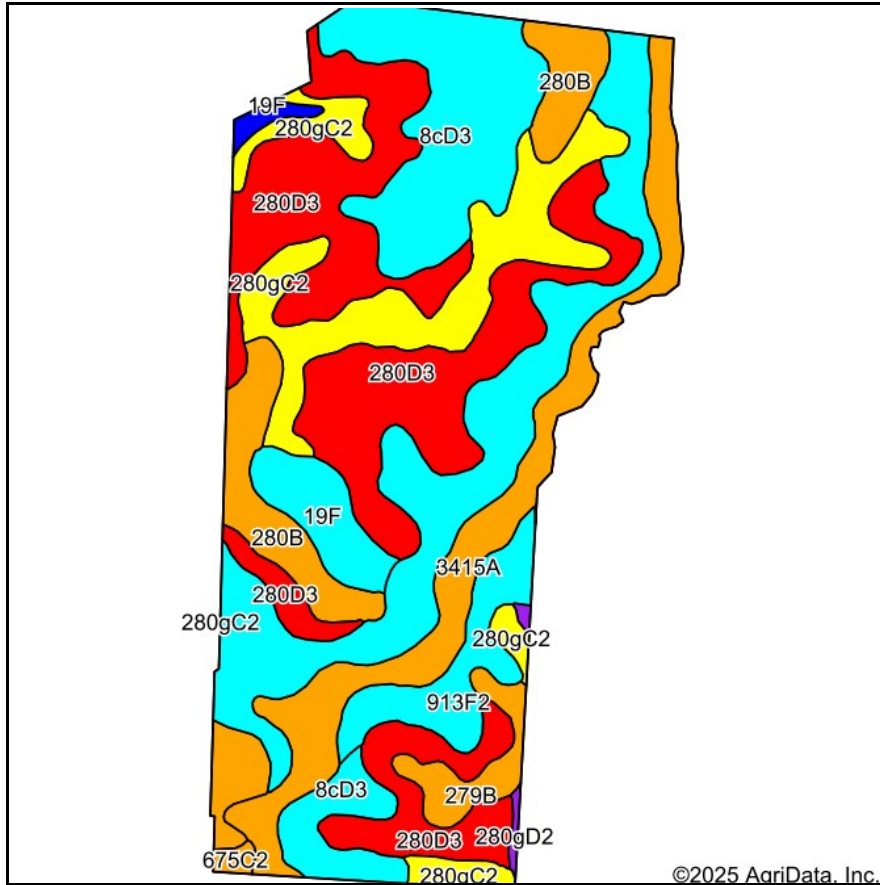
b Soils in the southern region were not rated for oats and are shown with a zero "0".

c Soils in the northern region or in both regions were not rated for grain sorghum and are shown with a zero "0".

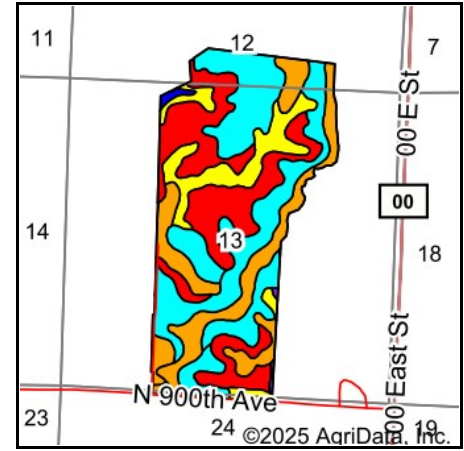
e Soils in the well drained group were not rated for grass-legume and are shown with a zero "0".

*n: The aggregation method is "Weighted Average using all components"

Soils Map



Soils data provided by USDA and NRCS.



State: **Illinois**
 County: **Henry**
 Location: **13-15N-5E**
 Township: **Kewanee**
 Acres: **306.07**
 Date: **6/12/2025**



Maps Provided By:



Area Symbol: IL073, Soil Area Version: 22

Code	Soil Description	Acres	Percent of field	Il. State Productivity Index Legend	Subsoil rooting <i>a</i>	Corn Bu/A	Soybeans Bu/A	Wheat Bu/A	Oats Bu/A <i>b</i>	Sorghum <i>c</i> Bu/A	Grass- legume <i>e</i> hay, T/A	Crop productivity index for optimum management	*n NCCPI Corn	*n NCCPI Soybeans
**8cD3	Hickory clay loam, cool mesic, 10 to 18 percent slopes, severely eroded	91.51	30.0%		FAV	**93	**32	**38	**43	0	**3.00	**71	65	49
**280D3	Fayette silty clay loam, glaciated, 10 to 18 percent slopes, severely eroded	84.40	27.6%		FAV	**130	**41	**51	**66	0	**4.00	**96	74	53
**280gC2	Fayette silt loam, glaciated, 5 to 10 percent slopes, eroded	37.41	12.2%		FAV	**155	**49	**61	**79	0	**5.00	**113	84	66

Code	Soil Description	Acres	Percent of field	II. State Productivity Index Legend	Subsoil rooting a	Corn Bu/A	Soybeans Bu/A	Wheat Bu/A	Oats Bu/A b	Sorghum c Bu/A	Grass-legume e hay, T/A	Crop productivity index for optimum management	* ⁿ NCCPI Corn	* ⁿ NCCPI Soybeans
**3415A	Orion silt loam, 0 to 2 percent slopes, frequently flooded	32.45	10.6%		FAV	**162	**51	**59	**80	0	**5.00	**118	88	82
**280B	Fayette silt loam, glaciated, 2 to 5 percent slopes	25.60	8.4%		FAV	**164	**52	**65	**83	0	**5.00	**120	89	78
**913F2	Marseilles-Hickory complex, 18 to 35 percent slopes, eroded	14.19	4.6%		UNF	**90	**30	**36	**44	0	**2.00	**68	15	6
**19F	Sylvan silt loam, 18 to 35 percent slopes	9.83	3.2%		FAV	**109	**35	**43	**50	0	**3.00	**80	20	11
**279B	Rozetta silt loam, 2 to 5 percent slopes	7.04	2.3%		FAV	**161	**50	**64	**82	0	**5.00	**118	87	78
**675B	Greenbush silt loam, 2 to 5 percent slopes	1.65	0.5%		FAV	**180	**57	**69	**95	0	**5.00	**131	91	75
**675C2	Greenbush silt loam, 5 to 10 percent slopes, eroded	1.07	0.3%		FAV	**171	**54	**65	**90	0	**5.00	**125	83	71
**280gD2	Fayette silt loam, glaciated, 10 to 18 percent slopes, eroded	0.92	0.3%		FAV	**145	**46	**57	**74	0	**5.00	**106	73	60
Weighted Average						126.9	40.9	49.9	62.7	*-	3.9	94	*ⁿ 71.2	*ⁿ 55.8

Soil data provided by USDA and NCCS. Soil data provided by University of Illinois at Champaign-Urbana.

Table: Optimum Crop Productivity Ratings for Illinois Soil EFOTG are sourced from Bulletin 811 calculated Map Unit Base Yield Indices, and adjusted (Adj) for slope, erosion, flooding, and surface texture. Publication Date: 01-28-2025

Crop yields and productivity (B811 EFOTG) are maintained at the following USDA web site: 2023 Illinois Soil Productivity and Yield Indices:

<https://efotg.sc.egov.usda.gov/#/state/IL/documents/section=2&folder=52809>

** Base indexes from Bulletin 811 adjusted for slope, erosion, flooding, and surface texture according to the II. Soils EFOTG

b Soils in the southern region were not rated for oats and are shown with a zero "0".

c Soils in the northern region or in both regions were not rated for grain sorghum and are shown with a zero "0".

e Soils in the well drained group were not rated for grass-legume and are shown with a zero "0".

*ⁿ: The aggregation method is "Weighted Average using all components"