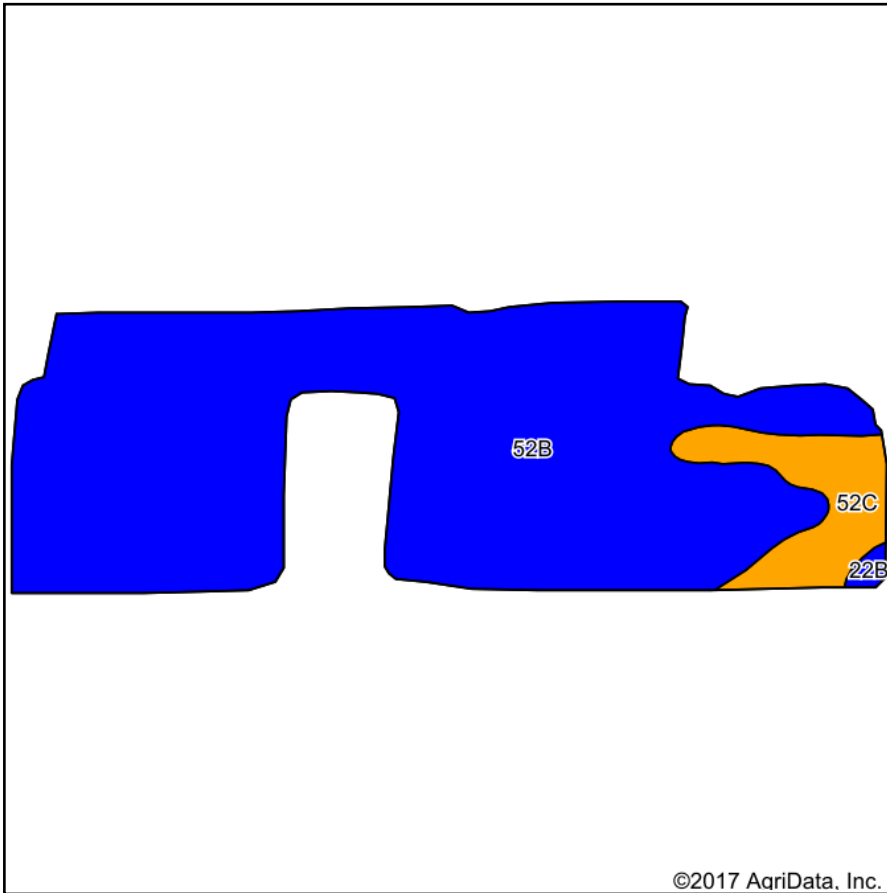
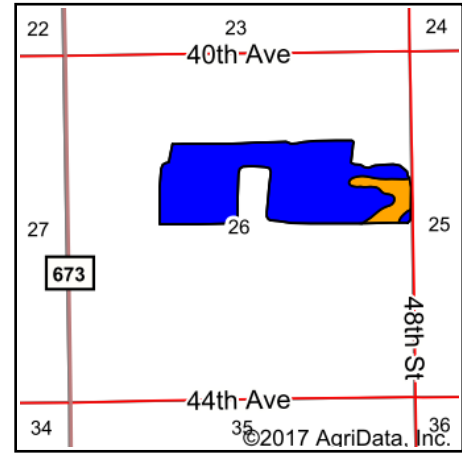


# Soils Map



Soils data provided by USDA and NRCS.

©2017 AgriData, Inc.



State: **Michigan**  
 County: **Van Buren**  
 Location: **26-2S-15W**  
 Township: **Arlington**  
 Acres: **89.11**  
 Date: **10/31/2017**



Maps Provided By:



© AgriData, Inc. 2017

www.AgrIDataInc.com



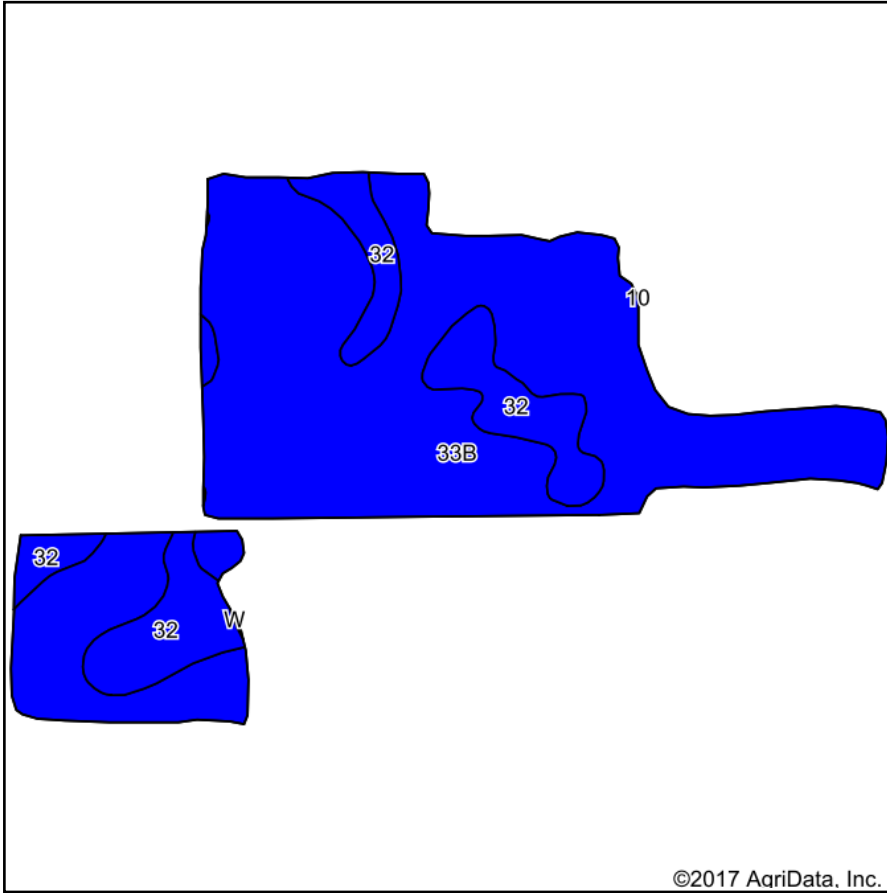
## Area Symbol: MI159, Soil Area Version: 12

Code	Soil Description	Acres	Percent of field	Non-Irr Class Legend	Soil Drainage	Non-Irr Class *c	Irr Class *c	Corn	Corn silage	Soybeans	Winter wheat
52B	Riddles sandy loam, 1 to 6 percent slopes	80.78	90.7%		Well drained	Ile		110	20	38	50
52C	Riddles sandy loam, 6 to 12 percent slopes	7.82	8.8%		Well drained	IIle		105	19	37	47
22B	Kalamazoo loam, 2 to 6 percent slopes	0.51	0.6%		Well drained	Ile	Ile				
<b>Weighted Average</b>								<b>108.9</b>	<b>19.8</b>	<b>37.7</b>	<b>49.5</b>

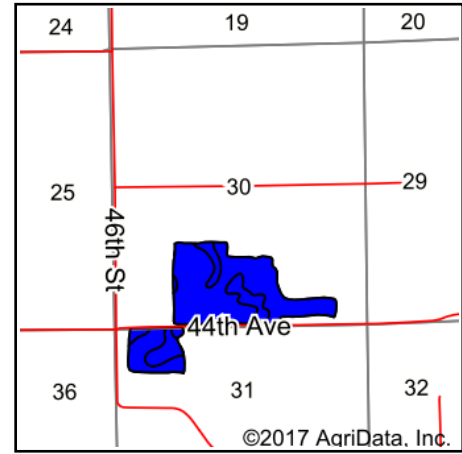
\*c: Using Capabilities Class Dominant Condition Aggregation Method

Soils data provided by USDA and NRCS.

# Soils Map



Soils data provided by USDA and NRCS.



State: **Michigan**  
 County: **Van Buren**  
 Location: **31-2S-14W**  
 Township: **Paw Paw**  
 Acres: **90.98**  
 Date: **11/1/2017**



Maps Provided By:



© AgriData, Inc. 2017

www.AgriDataInc.com



## Area Symbol: MI159, Soil Area Version: 12

Code	Soil Description	Acres	Percent of field	Non-Irr Class Legend	Water Table	Soil Drainage	Non-Irr Class *c	Alfalfa hay	Corn	Corn silage	Oats	Soybeans	Winter wheat
33B	Tuscola silt loam, 0 to 4 percent slopes	74.04	81.4%		4.5ft.	Moderately well drained	Ile		100	17	80	32	47
32	Colwood silt loam	16.94	18.6%		0ft.	Poorly drained	Ilw	5.5	140	22	115	45	65
<b>Weighted Average</b>								<b>1</b>	<b>107.4</b>	<b>17.9</b>	<b>86.5</b>	<b>34.4</b>	<b>50.4</b>

\*c: Using Capabilities Class Dominant Condition Aggregation Method

Soils data provided by USDA and NRCS.