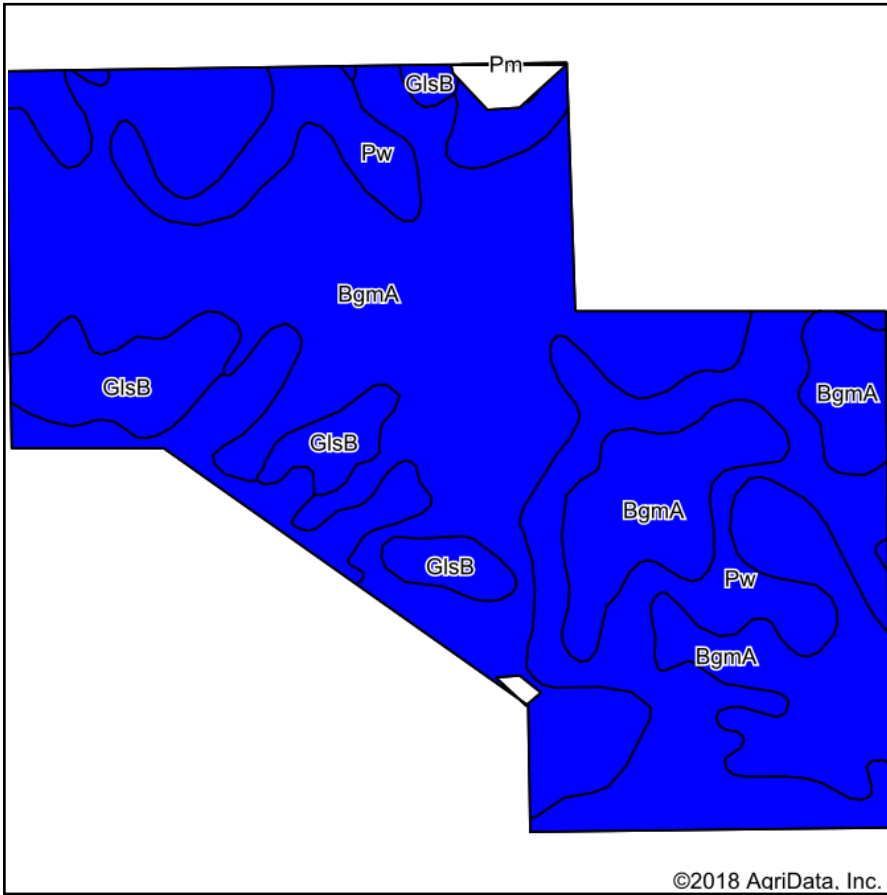
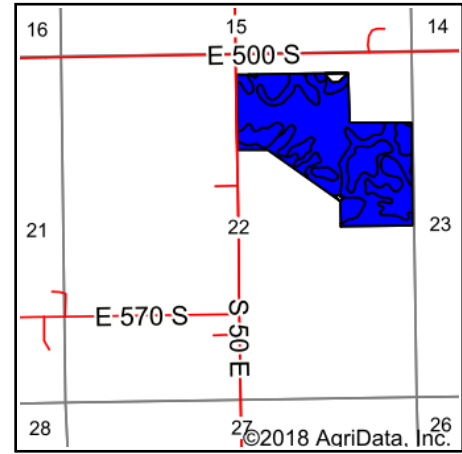


Soils Map



Soils data provided by USDA and NRCS.



State: **Indiana**
 County: **Miami**
 Location: **22-26N-4E**
 Township: **Washington**
 Acres: **93.08**
 Date: **1/13/2019**



Maps Provided By:



Area Symbol: IN103, Soil Area Version: 22

Code	Soil Description	Acres	Percent of field	Non-Irr Class Legend	Water Table	Restrictive Layer	Soil Drainage	Non-Irr Class *c	Corn	Soybeans	Winter wheat	*n NCCPI Soybeans
BgmA	Blount silt loam, ground moraine, 0 to 2 percent slopes	57.33	61.6%		0.7ft.	3.2ft. (Densic material)	Somewhat poorly drained	llw	141	45	63	51
Pw	Pewamo silty clay loam, 0 to 1 percent slopes	27.49	29.5%		0.5ft.	> 6.5ft.	Very poorly drained	llw	157	47	64	67
GlsB	Glynwood silt loam, ground moraine, 2 to 6 percent slopes	8.26	8.9%		1.5ft.	2.8ft. (Densic material)	Moderately well drained	lle	132	46	59	44
Weighted Average									144.9	45.7	62.9	*n 55.1

*n: The aggregation method is "Weighted Average using major components"

*c: Using Capabilities Class Dominant Condition Aggregation Method

Soils data provided by USDA and NRCS.