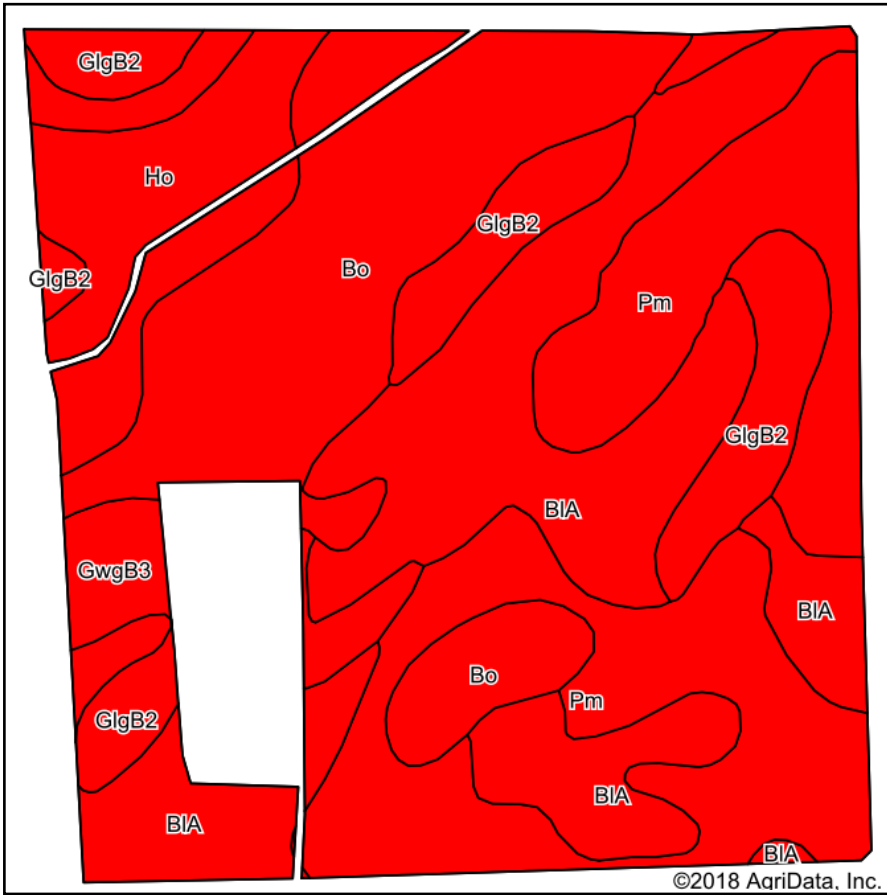
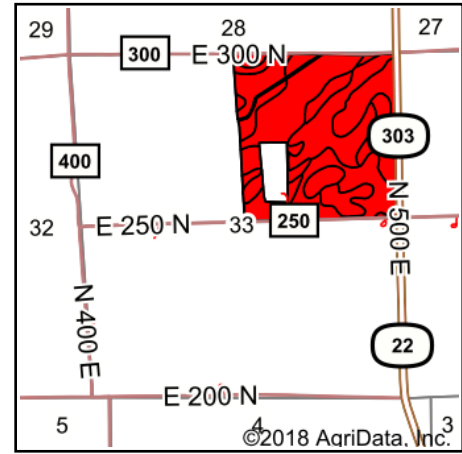


Soils Map



Soils data provided by USDA and NRCS.



State: **Indiana**
 County: **Blackford**
 Location: **33-24N-11E**
 Township: **Harrison**
 Acres: **144.48**
 Date: **7/16/2018**



Maps Provided By:



Area Symbol: IN009, Soil Area Version: 20

Code	Soil Description	Acres	Percent of field	PI Legend	Soil Drainage	Non-Irr Class *c	Productivity Index	Soybeans	Corn
BIA	Blount-Glynwood, thin solum complex, 0 to 3 percent slopes	40.44	28.0%		Somewhat poorly drained	IIw	0	44	131
Pm	Pewamo silty clay, 0 to 2 percent slopes	38.19	26.4%		Very poorly drained	IIw	0	43	153
Bo	Bono silty clay	33.80	23.4%		Very poorly drained	IIIw	0	40	150
GlgB2	Glynwood silt loam, ground moraine, 1 to 4 percent slopes, eroded	16.50	11.4%		Moderately well drained	Ile	4	42	123
Ho	Houghton muck, drained	12.70	8.8%		Very poorly drained	IIIw	0	42	159
GwgB3	Glynwood-Mississinewa clay loams, ground moraine, 3 to 8 percent slopes, severely eroded	2.85	2.0%		Moderately well drained	IIIe	7	40	120
Weighted Average							0.6	42.3	142.6

*c: Using Capabilities Class Dominant Condition Aggregation Method

Soils data provided by USDA and NRCS.