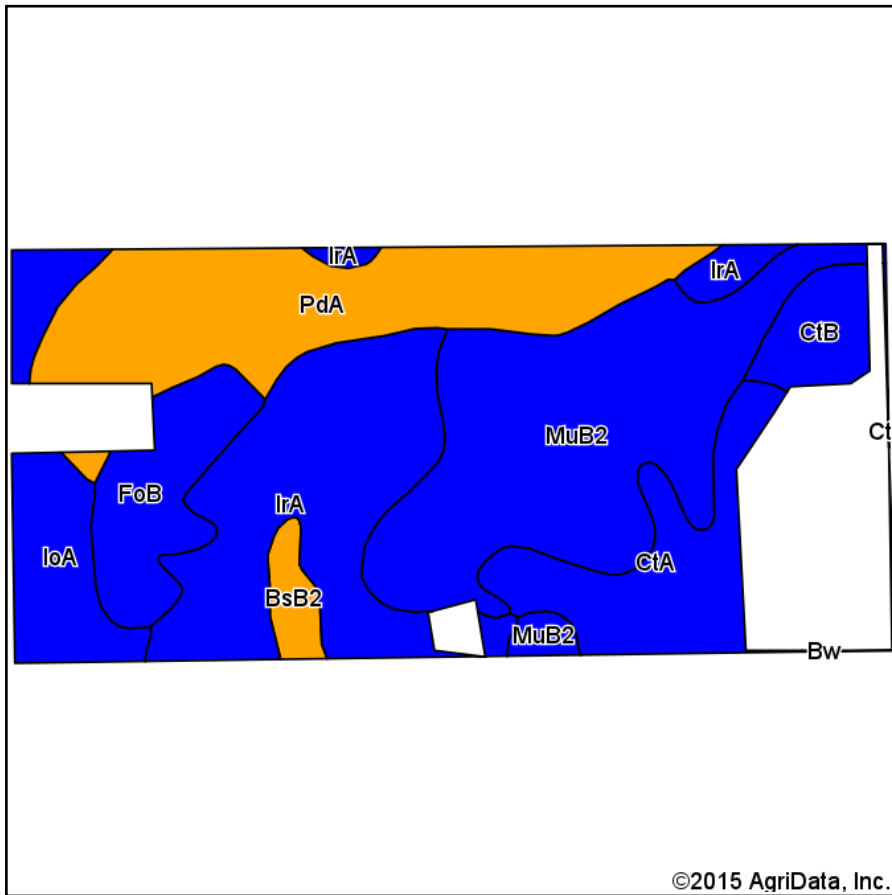
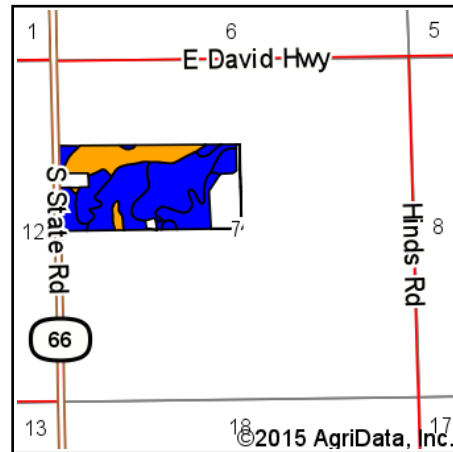


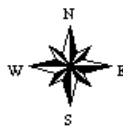
Soil Map



Soils data provided by USDA and NRCS.



State: **Michigan**
 County: **Ionia**
 Location: **7-6N-6W**
 Township: **Orange**
 Acres: **72.66**
 Date: **2/24/2015**



Maps Provided By:

 CUSTOMIZED ONLINE MAPPING
 © AgriData, Inc. 2014 www.AgriDataInc.com

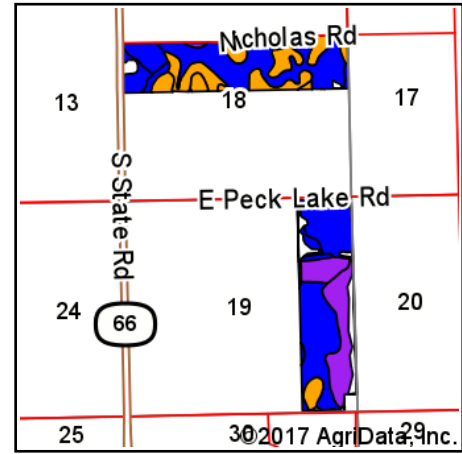
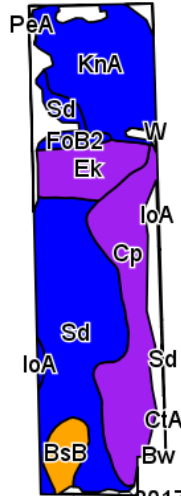
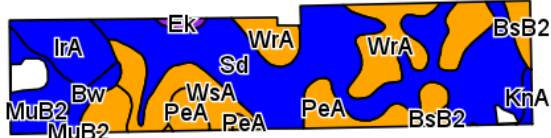
Area Symbol: MI067, Soil Area Version: 10

Code	Soil Description	Acres	Percent of field	Non-Irr Class Legend	Water Table	Non-Irr Class	Irr Class	Alfalfa hay	Corn	Corn silage	Oats	Soybeans	Winter wheat	
MuB2	Miami loam, 2 to 6 percent slopes, moderately eroded	19.95	27.5%		> 6.5ft.	Ile			105			37	47	
IrA	Ionia sandy loam, 0 to 2 percent slopes	15.42	21.2%		2.5ft.	Ils			105	18	85	30	48	
PdA	Perrin loamy sand, 0 to 2 percent slopes	14.69	20.2%		2.7ft.	IIIs		3.5	80	14	60	28	35	
CtA	Conover loam, 0 to 2 percent slopes	7.16	9.9%		1.5ft.	IIw		5	130	19	105	40	65	
IoA	Ionia loam, 0 to 2 percent slopes	5.91	8.1%		2.5ft.	Ils			105	18	85	30	48	
FoB	Fox sandy loam, 2 to 6 percent slopes	5.45	7.5%		> 6.5ft.	Ile			105	17	70	35	42	
CtB	Conover loam, 2 to 6 percent slopes	2.77	3.8%		1.5ft.	Ile		5	120	18	100	36	60	
BsB2	Boyer and Spinks loamy sands, 2 to 6 percent slopes, moderately eroded	1.31	1.8%		> 6.5ft.	IIIs	IIIs	3.4	66	12	47	26	27	
Weighted Average									1.5	102.3	12.2	57.3	33	46.4

Area Symbol: MI067, Soil Area Version: 10

Soils data provided by USDA and NRCS.

Soils Map



State: **Michigan**
 County: **Ionia**
 Location: **19-6N-6W**
 Township: **Orange**
 Acres: **291.7**
 Date: **7/5/2017**



Soils data provided by USDA and NRCS.

Archived Soils Ending 11/15/2015

Area Symbol: MI067, Soil Area Version: 10

Code	Soil Description	Acres	Percent of field	Non-Irr Class Legend	Non-Irr Class *c	Irr Class *c	Alfalfa hay	Bromegrass alfalfa hay	Canarygrass ladino hay	Corn	Corn silage	Kentucky bluegrass	Oats	Orchardgrass alfalfa hay	Soybeans	Sugar beets	f	
Sd	Sebewa loam, 0 to 2 percent slopes	119.53	41.0%	[Blue Box]	Ilw													
Cp	Cohoctah-Sloan loams	32.85	11.3%	[Purple Box]	Vw													
KnA	Kibbie loam, 0 to 2 percent slopes	32.54	11.2%	[Blue Box]	Ilw		5	3.5		130	20		105			40		
WrA	Wasepi-Brady loamy sands, 0 to 2 percent slopes	23.05	7.9%	[Orange Box]	Ills		3.8	2.7		85	14		65			32		
Ek	Edwards muck, 0 to 1 percent slopes	14.16	4.9%	[Purple Box]	Vw													
WsA	Wasepi-Brady sandy loams, 0 to 2 percent slopes	13.96	4.8%	[Orange Box]	Ills		3.8	2.7		85	14		65			32		
PeA	Perrin sandy loam, 0 to 2 percent slopes	13.50	4.6%	[Orange Box]	Ills		3.5	2.5		80	14		60			28		
IrA	Ionia sandy loam, 0 to 2 percent slopes	11.52	3.9%	[Blue Box]	Ils			4		105	18		85			30	17	

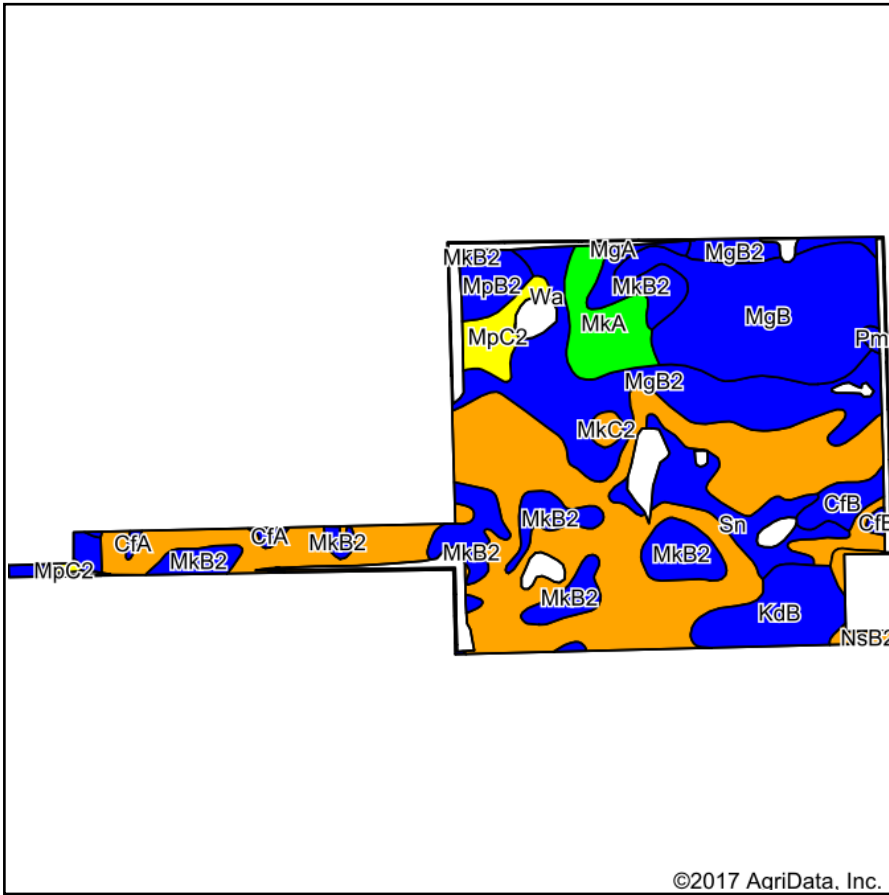


MuB2	Miami loam, 2 to 6 percent slopes, moderately eroded	9.42	3.2%		Ile					105					3.4	37	
BsB	Boyer and Spinks loamy sands, 2 to 6 percent slopes	6.11	2.1%		IIIls	IIIls	3.8	2.7		80	14		60			30	
PdA	Perrin loamy sand, 0 to 2 percent slopes	4.85	1.7%		IIIls		3.5	2.5		80	14		60			28	
BsB2	Boyer and Spinks loamy sands, 2 to 6 percent slopes, moderately eroded	3.84	1.3%		IIIls	IIIls	3.4	2.4		66	12		47			26	
Bw	Brookston loam	3.29	1.1%		IIlw				4.8	145						51	
FoB2	Fox sandy loam, 2 to 6 percent slopes, moderately eroded	2.01	0.7%		Ile			3.9		100	16	3.4	65			33	
IoA	Ionia loam, 0 to 2 percent slopes	0.96	0.3%		IIls			4		105	18		85			30	17
CtA	Conover loam, 0 to 2 percent slopes	0.11	0.0%		IIlw		5	4		130	19		105			40	
Weighted Average							1.4	1.2	0.1	43.1	6.2	*-	29.7	0.1	14.6	0.7	

*c: Using Capabilities Class Dominant Condition Aggregation Method

Soils data provided by USDA and NRCS.

Soils Map



Soils data provided by USDA and NRCS.



State: **Michigan**
 County: **Ionia**
 Location: **18-7N-6W**
 Township: **Ionia**
 Acres: **156.3**
 Date: **10/26/2017**



Maps Provided By:



© AgriData, Inc. 2017

www.AgridataInc.com



Archived Soils Ending 11/6/2014

Area Symbol: MI067, Soil Area Version: 9

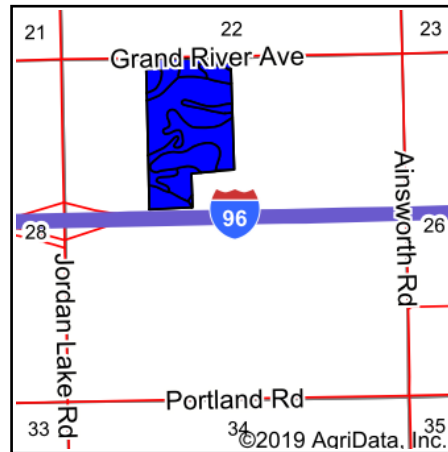
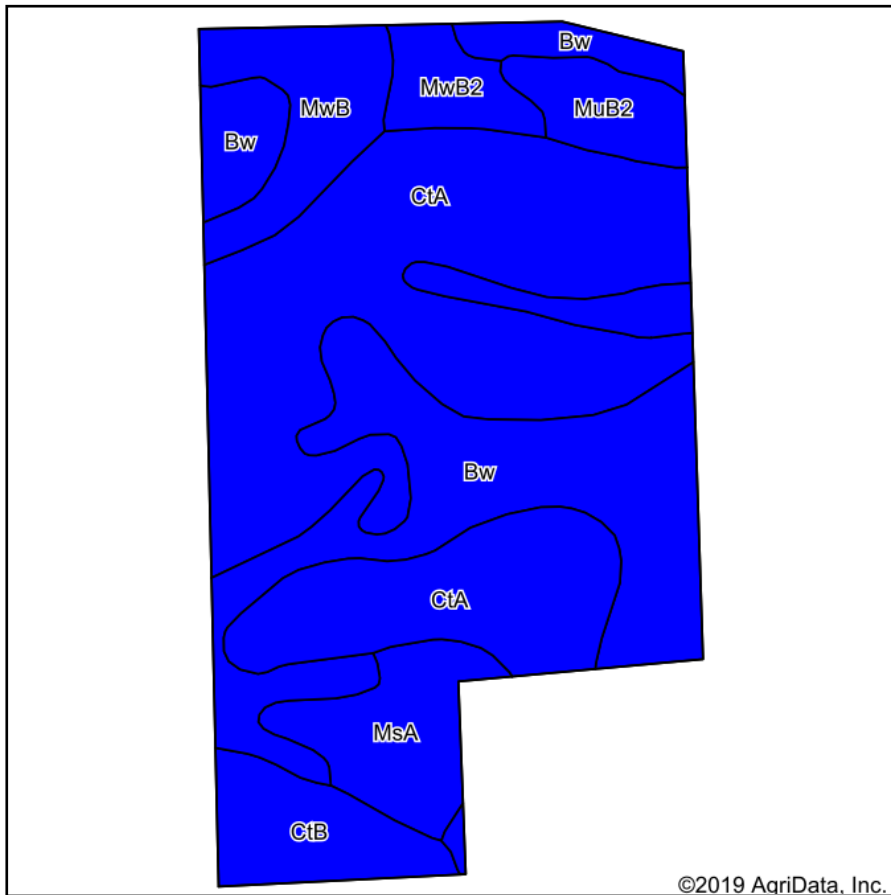
Code	Soil Description	Acres	Percent of field	Non-Irr Class Legend	Water Table	Soil Drainage	Non-Irr Class *c	Alfalfa hay	Alfalfa hay Irrigated	Corn	Corn Irrigated	Corn silage	Corn silage Irrigated	Oats	Soybeans	Winter wheat	Winter wheat Irrigated
MkC2	Marlette sandy loam, 6 to 12 percent slopes, moderately eroded	57.76	37.0%		> 6.5ft.	Well drained	Ille	3.6		90	145	14	20	75		45	
MgB2	Marlette loam, 2 to 6 percent slopes, moderately eroded	23.83	15.2%		> 6.5ft.		Ile	4.8		120	150	19	27	95		60	
MgB	Marlette loam, 2 to 6 percent slopes	22.52	14.4%		> 6.5ft.	Moderately well drained	Ile	4.8		120	150	19	27	95		60	
Mkb2	Marlette sandy loam, 2 to 6 percent slopes, moderately eroded	18.55	11.9%		> 6.5ft.	Well drained	Ile	4.8		120	150	19	27	95		60	
KdB	Kawkawlin sandy loam, 2 to 6 percent slopes	7.63	4.9%		1.5ft.	Somewhat poorly drained	Ile	4	5.8	105	140	16	23	85	38	46	
Sn	Sims loam	7.20	4.6%		0ft.	Poorly drained	Ilw	5.8		125		19		100	42	60	

MkA	Marlette sandy loam, 0 to 2 percent slopes	6.60	4.2%		4.2ft.	Well drained	lw	5		125	160	20	27	100		62	
MpC2	McBride sandy loam, 6 to 12 percent slopes, moderately eroded	3.60	2.3%		> 6.5ft.	Well drained	lVe	3.4		85		14		70	20	34	
MpB2	McBride sandy loam, 2 to 6 percent slopes, moderately eroded	3.53	2.3%		> 6.5ft.	Well drained	lle	3.8	7	95	155	16	26	80	28	40	60
CfB	Capac sandy loam, 2 to 6 percent slopes	2.77	1.8%		1.5ft.	Somewhat poorly drained	lle	5.5	6.8	110	155	17	26	95	36	62	
NsB2	Nester sandy loam, 2 to 6 percent slopes, moderately eroded	1.25	0.8%		> 6.5ft.	Well drained	lle	4.8		100		17		80	30	50	
CfA	Capac sandy loam, 0 to 2 percent slopes	0.63	0.4%		1.5ft.	Somewhat poorly drained	llw	5.5	7	120	155	18	26	100	40	65	
Pm	Pewamo clay loam	0.34	0.2%		0ft.	Poorly drained	llw	6		130		20		100	42	60	
MgA	Marlette loam, 0 to 2 percent slopes	0.09	0.1%		4.2ft.	Well drained	lw	5		125	160	20	27	100		62	
Weighted Average								4.3	0.6	106.9	136.4	16.8	22	86.6	6	52.8	1.4

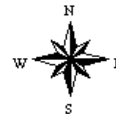
*c: Using Capabilities Class Dominant Condition Aggregation Method

Soils data provided by USDA and NRCS.

Soils Map



State: **Michigan**
 County: **Ionia**
 Location: **27-6N-7W**
 Township: **Berlin**
 Acres: **61.4**
 Date: **12/27/2019**

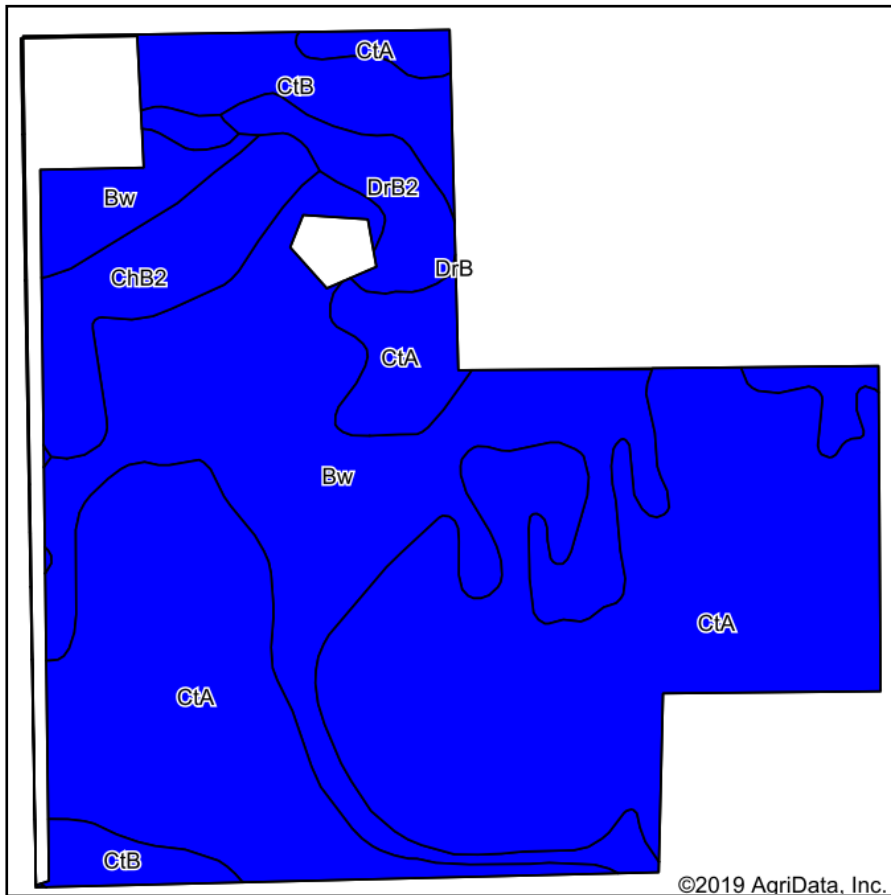


Soils data provided by USDA and NRCS.

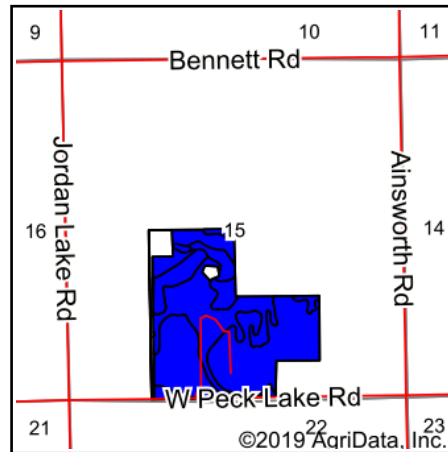
Archived Soils Ending 1/21/2012											
Code	Soil Description	Acres	Percent of field	Non-Irr Class Legend	Water Table	Restrictive Layer	Soil Drainage	Non-Irr Class *c	Corn	Soybeans	Winter wheat
CtA	Conover loam, 0 to 2 percent slopes	27.96	45.5%		1.5ft.	> 6.5ft.	Somewhat poorly drained	IIw	130	40	65
Bw	Brookston loam	15.84	25.8%		0ft.	> 6.5ft.	Very poorly drained	IIw	145	51	65
MwB	Miami-Owosso sandy loams, 2 to 6 percent slopes	4.11	6.7%		> 6.5ft.	> 6.5ft.	Well drained	Ile	110	38	50
MsA	Metamora sandy loam, 0 to 2 percent slopes	4.10	6.7%		1.5ft.	> 6.5ft.	Somewhat poorly drained	IIw	125	40	60
MuB2	Miami loam, 2 to 6 percent slopes, moderately eroded	3.85	6.3%		> 6.5ft.	> 6.5ft.	Well drained	Ile	105	37	47
CtB	Conover loam, 2 to 6 percent slopes	3.52	5.7%		1.5ft.	> 6.5ft.	Somewhat poorly drained	Ile	120	36	60
MwB2	Miami-Owosso sandy loams, 2 to 6 percent slopes, moderately eroded	2.02	3.3%		> 6.5ft.	> 6.5ft.	Well drained	Ile	105	37	47
Weighted Average									129.2	42.2	61.7

*c: Using Capabilities Class Dominant Condition Aggregation Method
 Soils data provided by USDA and NRCS.

Soils Map



Soils data provided by USDA and NRCS.



State: **Michigan**
 County: **Ionia**
 Location: **15-6N-7W**
 Township: **Berlin**
 Acres: **112.11**
 Date: **12/27/2019**



Maps Provided By:



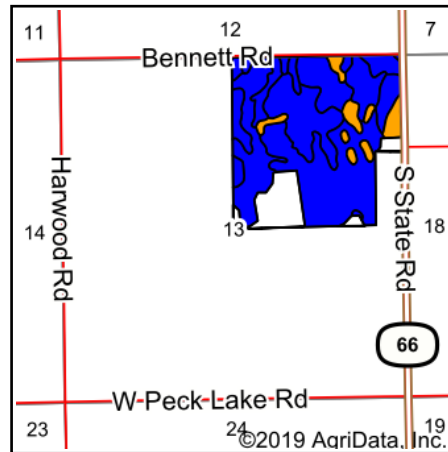
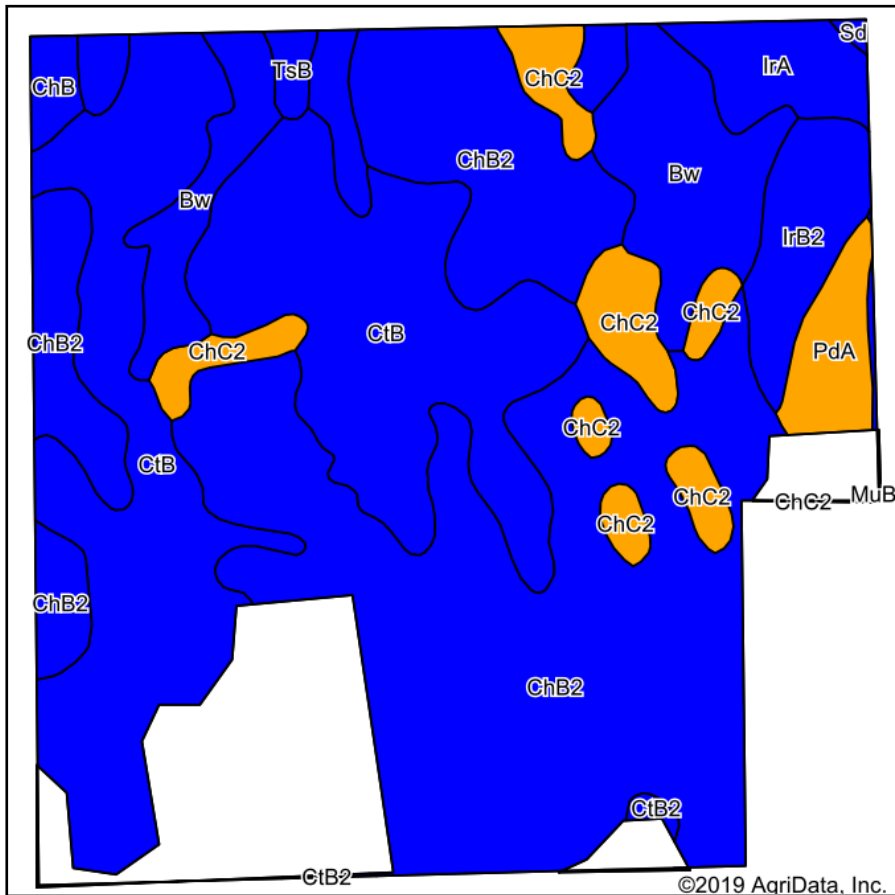
Archived Soils Ending 1/21/2012

Code	Soil Description	Acres	Percent of field	Non-Irr Class Legend	Water Table	Restrictive Layer	Soil Drainage	Non-Irr Class *c	Corn	Corn Irrigated	Soybeans	Winter wheat
CtA	Conover loam, 0 to 2 percent slopes	61.07	54.5%		1.5ft.	> 6.5ft.	Somewhat poorly drained	Ilw	130		40	65
Bw	Brookston loam	32.74	29.2%		0ft.	> 6.5ft.	Very poorly drained	Ilw	145		51	65
ChB2	Celina loam, 2 to 6 percent slopes, moderately eroded	7.42	6.6%		4.2ft.	> 6.5ft.	Well drained	Ile	120	160		60
CtB	Conover loam, 2 to 6 percent slopes	7.22	6.4%		1.5ft.	> 6.5ft.	Somewhat poorly drained	Ile	120		36	60
DrB2	Dryden sandy loam, 2 to 6 percent slopes, moderately eroded	3.66	3.3%		2.5ft.	> 6.5ft.	Moderately well drained	Ile	95		27	45
Weighted Average									131.9	10.6	39.9	63.7

*c: Using Capabilities Class Dominant Condition Aggregation Method

Soils data provided by USDA and NRCS.

Soils Map



State: **Michigan**
 County: **Ionia**
 Location: **13-6N-7W**
 Township: **Berlin**
 Acres: **131.88**
 Date: **12/27/2019**

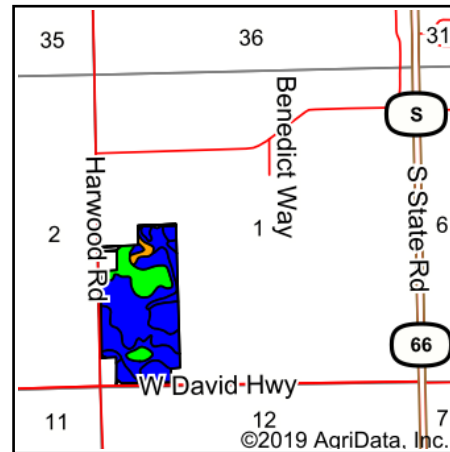
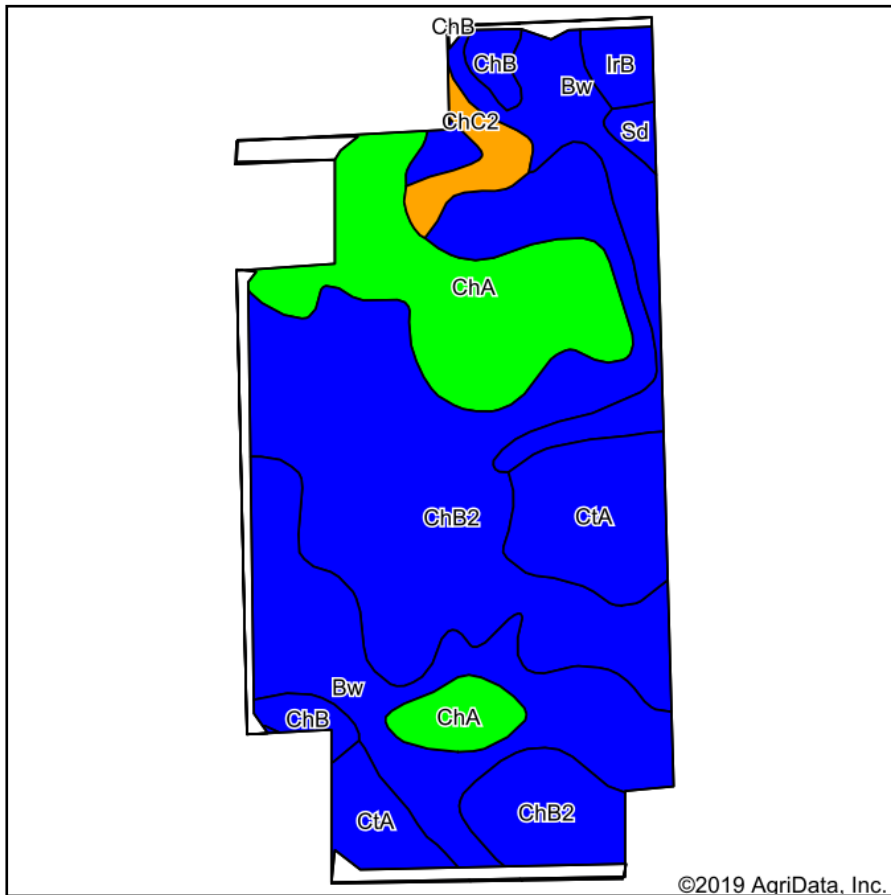


Soils data provided by USDA and NRCS.

Archived Soils Ending 1/21/2012												
Code	Soil Description	Acres	Percent of field	Non-Irr Class Legend	Water Table	Restrictive Layer	Soil Drainage	Non-Irr Class *c	Corn	Corn Irrigated	Soybeans	Winter wheat
ChB2	Celina loam, 2 to 6 percent slopes, moderately eroded	57.35	43.5%		4.2ft.	> 6.5ft.	Well drained	Ile	120	160		60
CtB	Conover loam, 2 to 6 percent slopes	40.04	30.4%		1.5ft.	> 6.5ft.	Somewhat poorly drained	Ile	120		36	60
Bw	Brookston loam	13.36	10.1%		0ft.	> 6.5ft.	Very poorly drained	Ilw	145		51	65
ChC2	Celina loam, 6 to 12 percent slopes, moderately eroded	7.49	5.7%		> 6.5ft.	> 6.5ft.	Well drained	Ille	110	150		56
IrB2	Ionia sandy loam, 2 to 6 percent slopes, moderately eroded	4.61	3.5%		2.5ft.	> 6.5ft.	Moderately well drained	Ile	100		25	43
IrA	Ionia sandy loam, 0 to 2 percent slopes	3.78	2.9%		2.5ft.	> 6.5ft.	Moderately well drained	Ils	105		30	48
PdA	Perrin loamy sand, 0 to 2 percent slopes	2.94	2.2%		2.7ft.	> 6.5ft.	Moderately well drained	Ills	80		28	35
ChB	Celina loam, 2 to 6 percent slopes	1.08	0.8%		4.2ft.	> 6.5ft.	Well drained	Ile	120	160		60
TsB	Tuscola soils, 2 to 6 percent slopes	0.73	0.6%		2.7ft.	> 6.5ft.	Moderately well drained	Ile	100		32	47
CtB2	Conover loam, 2 to 6 percent slopes, moderately eroded	0.34	0.3%		1.5ft.	> 6.5ft.	Somewhat poorly drained	Ile	120		36	60
Sd	Sebewa loam	0.16	0.1%		0ft.	> 6.5ft.	Poorly drained	Ilw	115		36	55
Weighted Average									119.8	79.4	18.8	58.7

*c: Using Capabilities Class Dominant Condition Aggregation Method
 Soils data provided by USDA and NRCS.

Soils Map



State: **Michigan**
 County: **Ionia**
 Location: **1-6N-7W**
 Township: **Berlin**
 Acres: **65.14**
 Date: **12/27/2019**



Soils data provided by USDA and NRCS.

Archived Soils Ending 1/21/2012												
Code	Soil Description	Acres	Percent of field	Non-Irr Class Legend	Water Table	Restrictive Layer	Soil Drainage	Non-Irr Class *c	Corn	Corn Irrigated	Soybeans	Winter wheat
ChB2	Celina loam, 2 to 6 percent slopes, moderately eroded	26.57	40.8%	Blue	4.2ft.	> 6.5ft.	Well drained	Ile	120	160		60
Bw	Brookston loam	15.80	24.3%	Blue	0ft.	> 6.5ft.	Very poorly drained	Ilw	145		51	65
ChA	Celina loam, 0 to 2 percent slopes	11.25	17.3%	Green	4.2ft.	> 6.5ft.	Well drained	Iw	125	160		62
CtA	Conover loam, 0 to 2 percent slopes	6.88	10.6%	Blue	1.5ft.	> 6.5ft.	Somewhat poorly drained	Ilw	130		40	65
ChC2	Celina loam, 6 to 12 percent slopes, moderately eroded	1.57	2.4%	Orange	> 6.5ft.	> 6.5ft.	Well drained	Ille	110	150		56
ChB	Celina loam, 2 to 6 percent slopes	1.49	2.3%	Blue	4.2ft.	> 6.5ft.	Well drained	Ile	120	160		60
IrB	Ionia sandy loam, 2 to 6 percent slopes	1.09	1.7%	Blue	2.5ft.	> 6.5ft.	Moderately well drained	Ile	100		25	43
Sd	Sebewa loam	0.49	0.8%	Blue	0ft.	> 6.5ft.	Poorly drained	Ilw	115		36	55
Weighted Average									127.4	100.2	17.3	61.7

*c: Using Capabilities Class Dominant Condition Aggregation Method
 Soils data provided by USDA and NRCS.