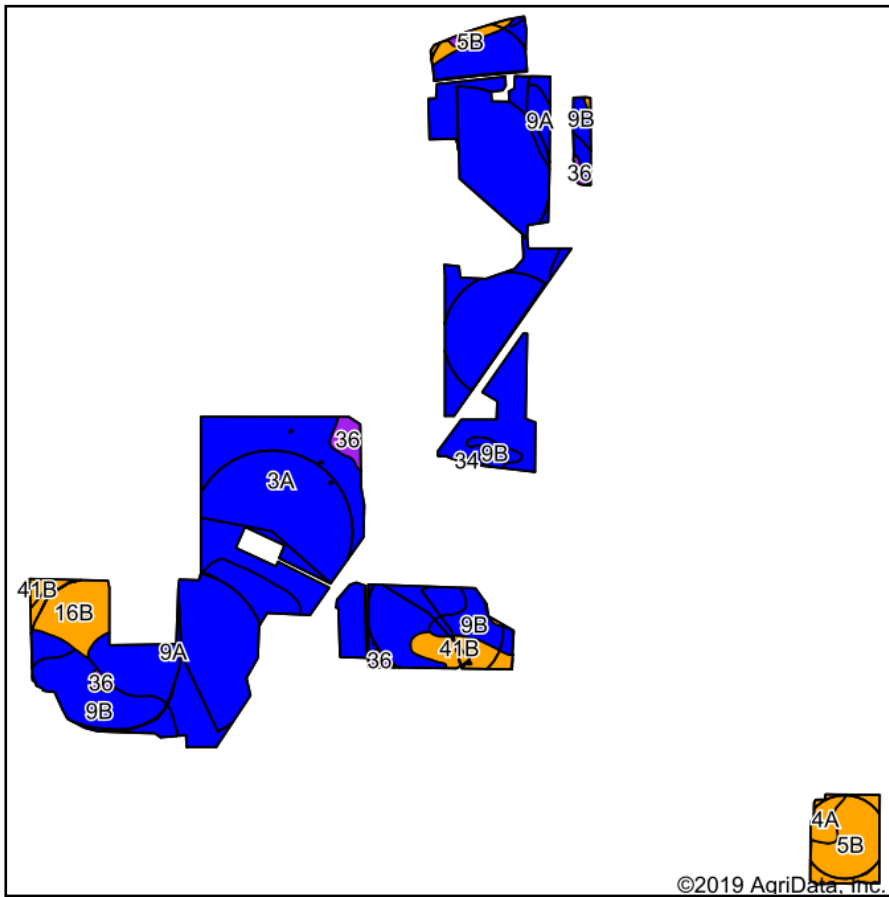
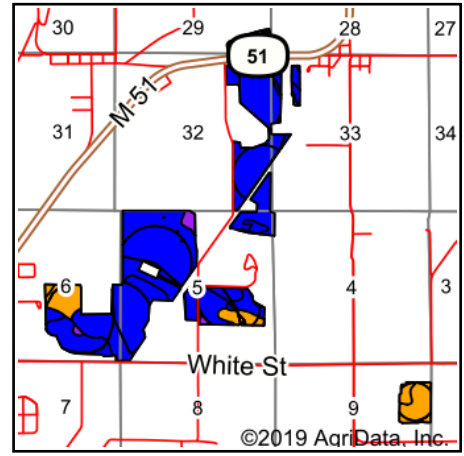


Soils Map



Soils data provided by USDA and NRCS.



State: **Michigan**
County: **Cass**
Location: **5-7S-16W**
Township: **Howard**
Acres: **590.7**
Date: **3/4/2020**



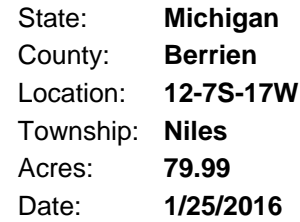
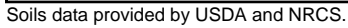
Maps Provided By:

[illegible]

4A	Oshtemo sandy loam, 0 to 2 percent slopes	6.13	1.0%		> 6.5ft.	IIIls	IIIls	3.5	8	110	175	16	27	80	30	57	45	61
16C	Ormas loamy sand, 6 to 12 percent slopes	0.44	0.1%		> 6.5ft.	IIIle		3.2		70		16			24		32	49
4B	Oshtemo sandy loam, 2 to 6 percent slopes	0.33	0.1%		> 6.5ft.	IIIls	IIIle	3.5	8	100	175	10	27	80	30	57	45	60
34	Pits	0.28	0.0%		> 6.5ft.													0
Weighted Average								4	5.1	113.1	157.9	17	24.4	78.9	30.5	48.7	48	59.4

*c: Using Capabilities Class Dominant Condition Aggregation Method
Soils data provided by USDA and NRCS.

Soil Map



 **surety®**
CUSTOMIZED ONLINE MAPPING
© AgriData, Inc. 2016 www.AgriDataInc.com



Area Symbol: MI027, Soil Area Version: 11

[illegible]

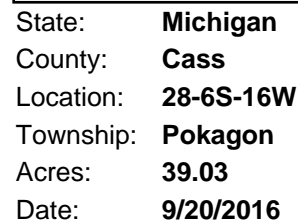
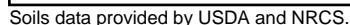
19A	Brady sandy loam, 0 to 2 percent slopes	0.92	1.2%		1ft.	Somewhat poorly drained	llw		4.5		115		19		95	33		50
Weighted Average									1.4	1.7	85.6	36.5	4.8	5.6	30.2	27.7	11.9	35.0

Area Symbol: MI021, Soil Area Version: 9
Area Symbol: MI027, Soil Area Version: 11

*c: Using Capabilities Class Dominant Condition Aggregation Method

Soils data provided by USDA and NRCS.

Soils Map

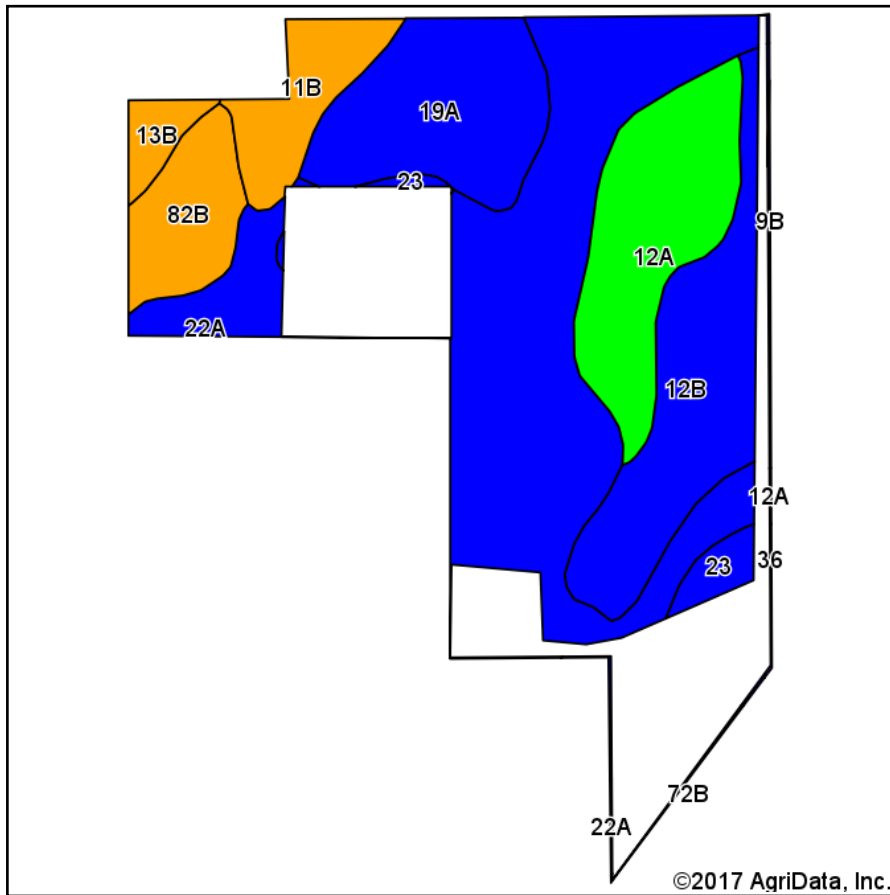


Code	Soil Description	Acres	Percent of field	Non-Irr Class Legend	Water Table	Restrictive Layer	Soil Drainage	Non-Irr Class *c	Irr Class *c	Corn	Corn Irrigated	Soybeans	Soybeans Irrigated	Winter wheat
4B	Oshtemo sandy loam, 2 to 6 percent slopes	37.05	94.9%		> 6.5ft.	> 6.5ft.	Well drained	IIIc	IIle	100	175	30	57	45
39	Cohoctah loam	1.12	2.9%		0ft.	> 6.5ft.	Very poorly drained	Vw						
4C	Oshtemo sandy loam, 6 to 12 percent slopes	0.86	2.2%		> 6.5ft.	> 6.5ft.	Well drained	IIle	IIle					
Weighted Average										94.9	166.1	28.5	54.1	42.7

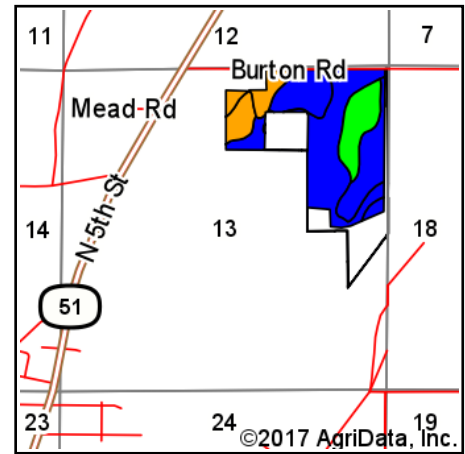
*c: Using Capabilities Class Dominant Condition Aggregation Method

Soils data provided by USDA and NRCS.

Soils Map



Soils data provided by USDA and NRCS.



State: **Michigan**
 County: **Berrien**
 Location: **13-7S-17W**
 Township: **Niles**
 Acres: **95**
 Date: **8/3/2017**



Maps Provided By:



© AgriData, Inc. 2017

www.AgriDataInc.com



Archived Soils Ending 1/21/2012

Code	Soil Description	Acres	Percent of field	Non-Irr Class Legend	Water Table	Restrictive Layer	Soil Drainage	Non-Irr Class *c	Irr Class *c	Corn	Corn Irrigated	Soybeans	Soybeans Irrigated	Winter wheat
22A	Monitor loam, 0 to 3 percent slopes	36.33	38.2%		0.5ft.	> 6.5ft.	Somewhat poorly drained	IIw		125		44		50
12B	Ockley loam, 2 to 6 percent slopes	15.04	15.8%		> 6.5ft.	> 6.5ft.	Well drained	Ile		110		38		44
12A	Ockley loam, 0 to 2 percent slopes	14.05	14.8%		> 6.5ft.	> 6.5ft.	Well drained	Iw		110		38		44
19A	Brady sandy loam, 0 to 2 percent slopes	13.20	13.9%		0.5ft.	> 6.5ft.	Somewhat poorly drained	IIw		115		33		50
82B	Oshtemo-Ockley complex, 0 to 4 percent slopes	6.31	6.6%		> 6.5ft.	> 6.5ft.	Well drained	IIIs	IIle	95	175	30	57	45
11B	Oshtemo sandy loam, 0 to 6 percent slopes	5.66	6.0%		> 6.5ft.	> 6.5ft.	Well drained	IIIs	IIle	95	175	30	57	45
23	Sebewa loam	2.06	2.2%		0ft.	> 6.5ft.	Poorly drained	IIw		115		36		55
13B	Spinks loamy fine sand, 0 to 6 percent slopes	1.86	2.0%		> 6.5ft.	> 6.5ft.	Well drained	IIIs	IIIs	75	165	27	50	30
9B	Kalamazoo loam, 2 to 6 percent slopes	0.28	0.3%		> 6.5ft.	> 6.5ft.	Well drained	Ile	Ile	100	175	30	55	40
72B	Udipsamments and Udorthents, 0 to 6 percent slopes	0.12	0.1%		> 6.5ft.	> 6.5ft.								
36	Gilford sandy loam	0.09	0.1%		0ft.	> 6.5ft.	Very poorly drained	Vw						
Weighted Average										113.7	25.8	38.2	8.3	47.1

*c: Using Capabilities Class Dominant Condition Aggregation Method

Soils data provided by USDA and NRCS.