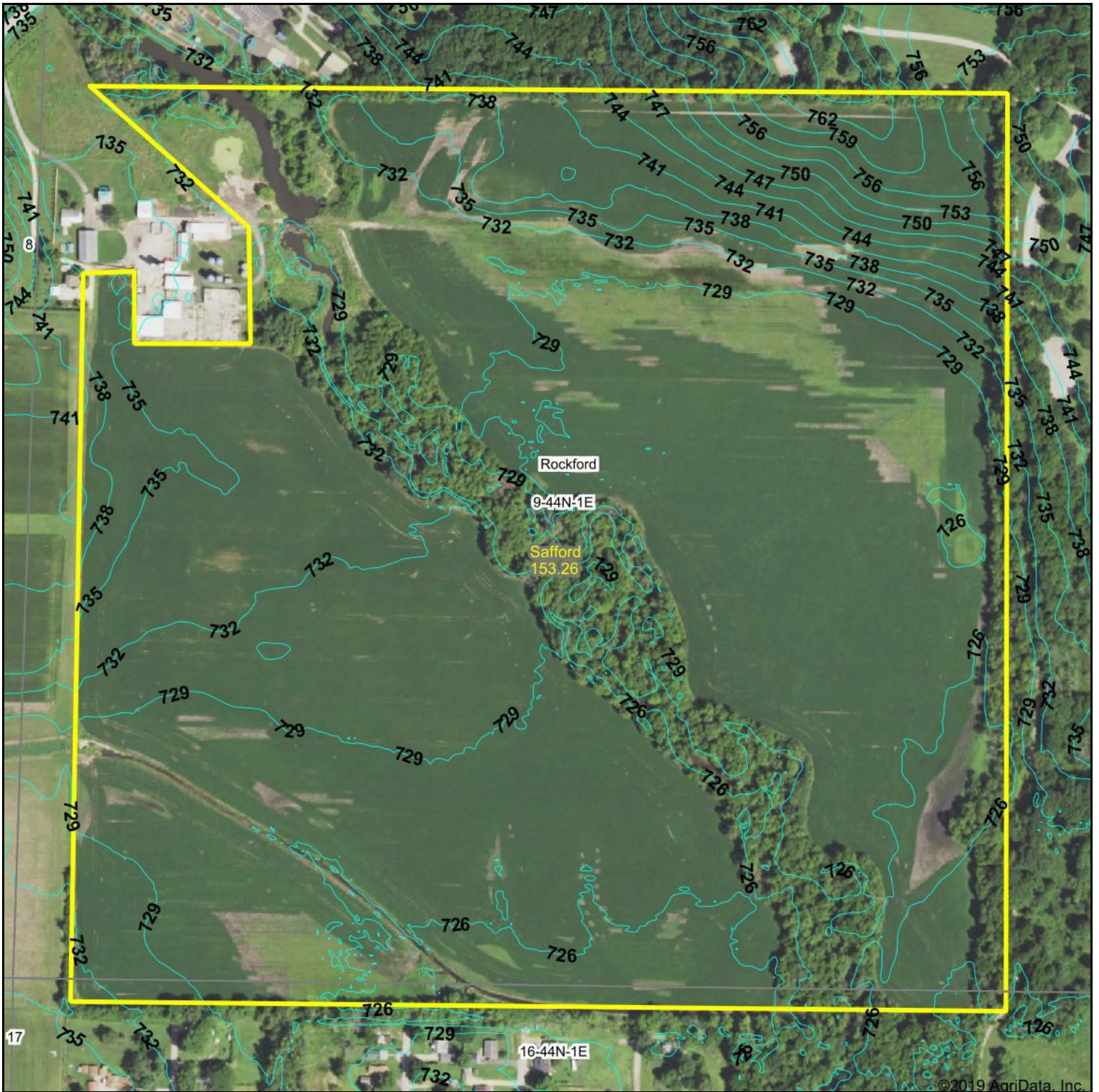


Topography Contours



Source: USGS 3 meter dem

Interval: 3.0

Min: 723.6

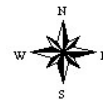
Max: 767.2

Range: 43.6

Average: 731.1

Standard Deviation: 7.55

0ft 781ft 1562ft



5/11/2020

9-44N-1E
Winnebago County
Illinois

Map Center: 42° 17' 59.13, -89° 7' 43.46