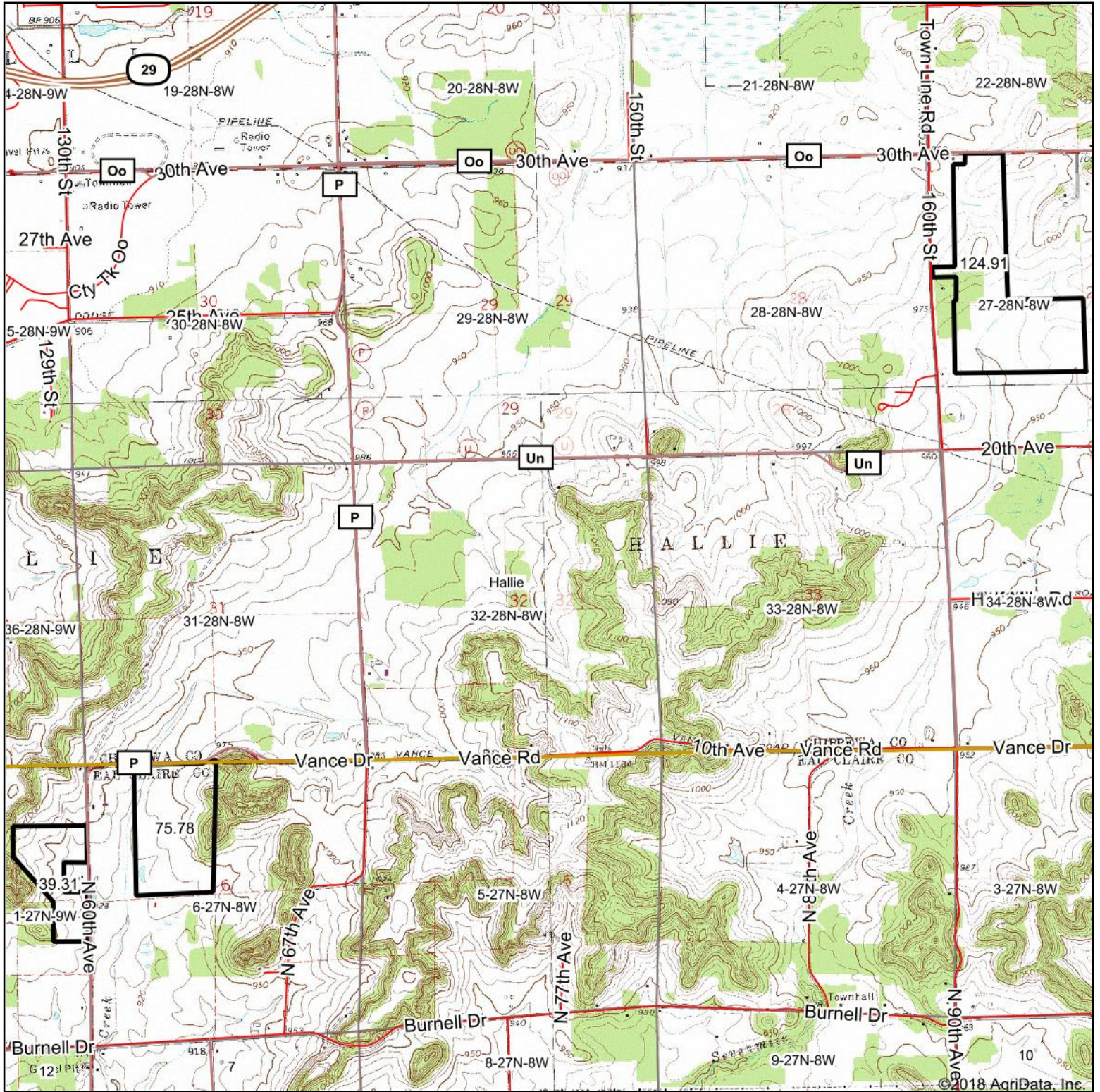


Topography Map



map center: 44° 52' 2.76, -91° 22' 29.4

0ft 2776ft 5551ft

32-28N-8W
Chippewa County
Wisconsin



4/9/2018



Maps Provided By:
surety
 CUSTOMIZED ONLINE MAPPING
 © AgriData, Inc. 2018 www.AgridataInc.com