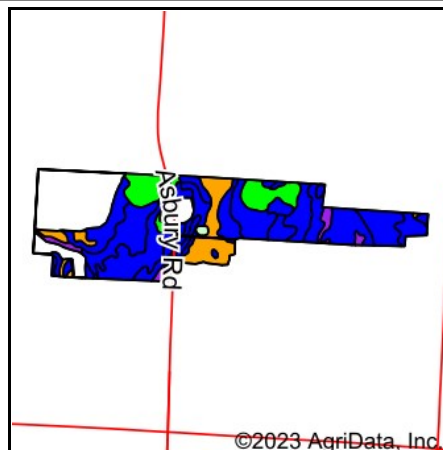
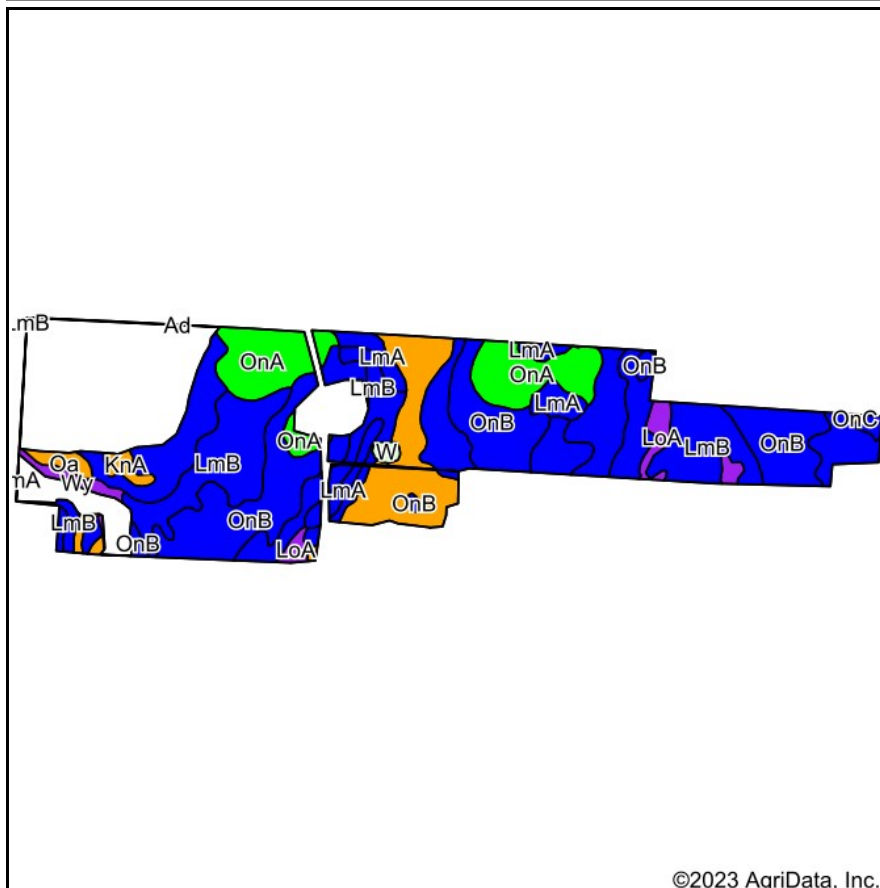


Soils Map



State: **New York**
 County: **Genesee**
 Location: **42° 56' 33.05, -77° 57' 44.26**
 Township: **Pavilion**
 Acres: **130.28**
 Date: **2/28/2023**



Maps Provided By:



Soils data provided by USDA and NRCS.

Archived Soils Ending 11/6/2014 Area Symbol: NY037, Soil Area Version: 13

Code	Soil Description	Acres	Percent of field	Non-Irr Class Legend	Water Table	Restrictive Layer	Soil Drainage	Non-Irr Class *c	Corn Bu	Wheat Bu	Winter wheat Bu	NCCPI Corn and Soybeans
LmB	Lima silt loam, 3 to 8 percent slopes	41.71	32.0%		1ft.	> 6.5ft.	Moderately well drained	lle	96			53
OnB	Ontario loam, 3 to 8 percent slopes	37.19	28.5%		> 6.5ft.	> 6.5ft.	Well drained	lle	104			6
OnA	Ontario loam, 0 to 3 percent slopes	16.18	12.4%		> 6.5ft.	> 6.5ft.	Well drained	l	104			6
KnA	Kendaia silt loam, 0 to 3 percent slopes	14.55	11.2%		0.7ft.	> 6.5ft.	Somewhat poorly drained	lllw	64		38	57
LmA	Lima silt loam, 0 to 3 percent slopes	14.14	10.9%		1ft.	> 6.5ft.	Moderately well drained	llw	96			53
LoA	Lyons silt loam, 0 to 3 percent slopes	3.05	2.3%		0ft.	> 6.5ft.	Poorly drained	V w				19
Wy	Wayland soils complex, 0 to 3 percent slopes, frequently flooded	1.48	1.1%		0ft.	> 6.5ft.	Poorly drained	V w	9	3		23
Oa	Oatka silty clay loam	1.24	1.0%		0.5ft.	> 6.5ft.	Somewhat poorly drained	lllw	68	24		67
W	Water	0.61	0.5%		> 6.5ft.	> 6.5ft.						0
OnC	Ontario loam, 8 to 15 percent slopes	0.13	0.1%		> 6.5ft.	> 6.5ft.	Well drained	lle	96			6
Weighted Average								*-	91.8	0.3	4.2	32.9

*c: Using Capabilities Class Dominant Condition Aggregation Method

*- Non Irr Class weighted average cannot be calculated on the current soils data due to missing data.

Soils data provided by USDA and NRCS.