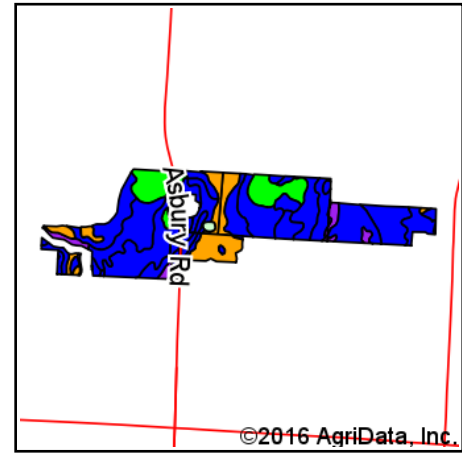
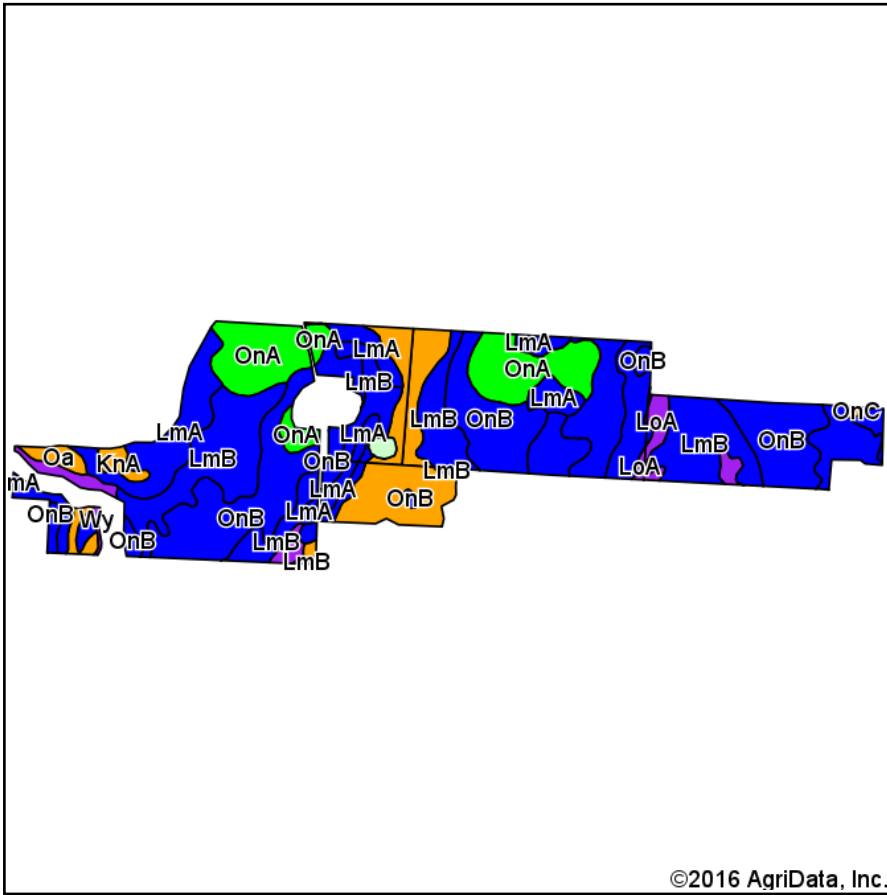


Soils Map



State: **New York**
 County: **Genesee**
 Location: **42° 56' 36.32, -77° 57' 44.02**
 Township: **Pavilion**
 Acres: **138.72**
 Date: **11/9/2016**



Soils data provided by USDA and NRCS.

Area Symbol: NY037, Soil Area Version: 15

Code	Soil Description	Acres	Percent of field	Non-Irr Class Legend	Water Table	Restrictive Layer	Soil Drainage	Non-Irr Class *c	Corn	Soybeans	Winter wheat	Wheat
LmB	Lima silt loam, 3 to 8 percent slopes	44.64	32.2%		1ft.	> 6.5ft.	Moderately well drained	Ile	96			
OnB	Ontario loam, 3 to 8 percent slopes	39.58	28.5%		> 6.5ft.	> 6.5ft.	Well drained	Ile	104			
OnA	Ontario loam, 0 to 3 percent slopes	16.76	12.1%		> 6.5ft.	> 6.5ft.	Well drained	I	104			
KnA	Kendaia silt loam, 0 to 3 percent slopes	15.54	11.2%		0.6ft.	> 6.5ft.	Somewhat poorly drained	Illw	119	3	4	
LmA	Lima silt loam, 0 to 3 percent slopes	15.05	10.8%		1ft.	> 6.5ft.	Moderately well drained	Ilw	96			
LoA	Lyons soils, 0 to 3 percent slopes	3.49	2.5%		0ft.	> 6.5ft.	Poorly drained	Vw	5	1	2	
Wy	Wayland soils complex, 0 to 3 percent slopes, frequently flooded	1.59	1.1%		0ft.	> 6.5ft.	Poorly drained	Vw	8			3
Oa	Oatka silty clay loam	1.26	0.9%		0.5ft.	> 6.5ft.	Somewhat poorly drained	Illw	68			24
W	Water	0.61	0.4%		> 6.5ft.	> 6.5ft.						
OnC	Ontario loam, 8 to 15 percent slopes	0.20	0.1%		> 6.5ft.	> 6.5ft.	Well drained	Ille	96			
Weighted Average									97.9	0.4	0.5	0.3

Area Symbol: NY037, Soil Area Version: 15

*c: Using Capabilities Class Dominant Condition Aggregation Method

Soils data provided by USDA and NRCS.