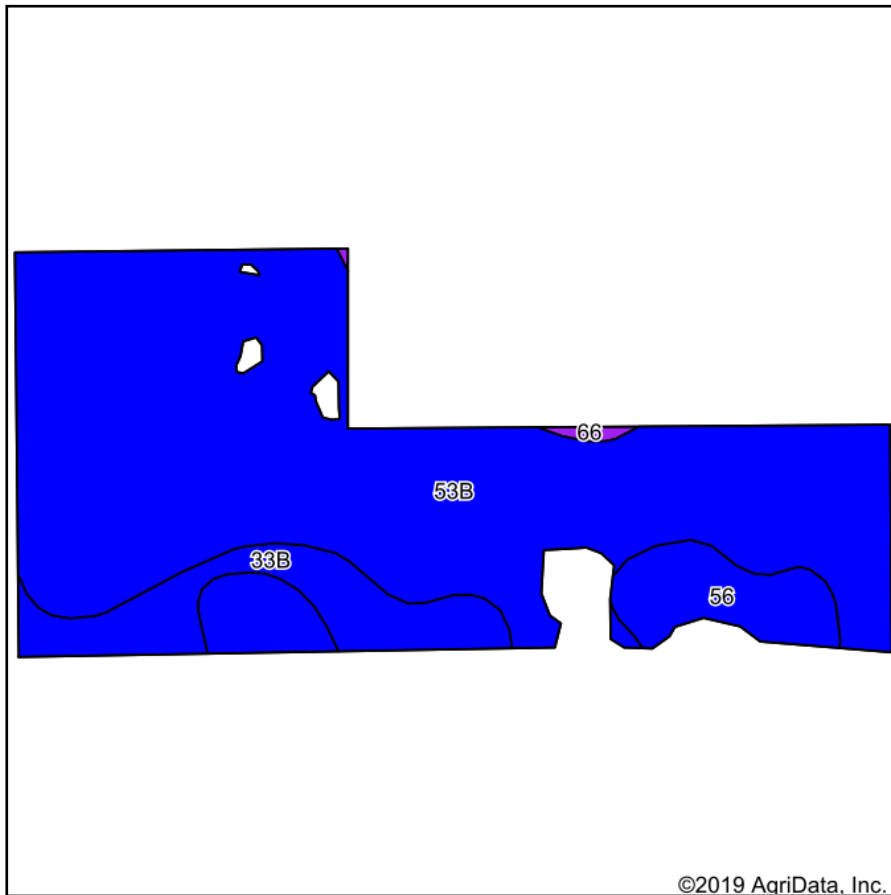
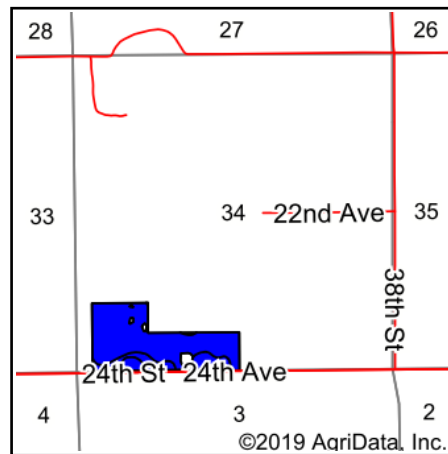


Soils Map



Soils data provided by USDA and NRCS.



State: **Michigan**
 County: **Van Buren**
 Location: **34-1S-14W**
 Township: **Bloomington**
 Acres: **44.08**
 Date: **3/30/2020**



Area Symbol: MI159, Soil Area Version: 15												
Code	Soil Description	Acres	Percent of field	Non-Irr Class Legend	Water Table	Restrictive Layer	Soil Drainage	Non-Irr Class *c	Cor n	Soybeans	Winter wheat	*n NCCPI Soybeans
53B	Capac loam, Lake Michigan lobe, 0 to 4 percent slopes	34.65	78.6%		1ft.	> 6.5ft.	Somewhat poorly drained	Ile				66
33B	Tuscola silt loam, 0 to 4 percent slopes	4.65	10.5%		1.5ft.	> 6.5ft.	Moderately well drained	Ile	100	32	47	79
56	Pewamo silty clay loam	4.58	10.4%		0ft.	> 6.5ft.	Poorly drained	Ilw	130	42	60	81
66	Alganssee-Cohoctah complex	0.20	0.5%		0.5ft.	> 6.5ft.	Somewhat poorly drained	Vw				11
Weighted Average									24.1	7.7	11.2	*n 68.7

*n: The aggregation method is "Weighted Average using major components"

*c: Using Capabilities Class Dominant Condition Aggregation Method

Soils data provided by USDA and NRCS.