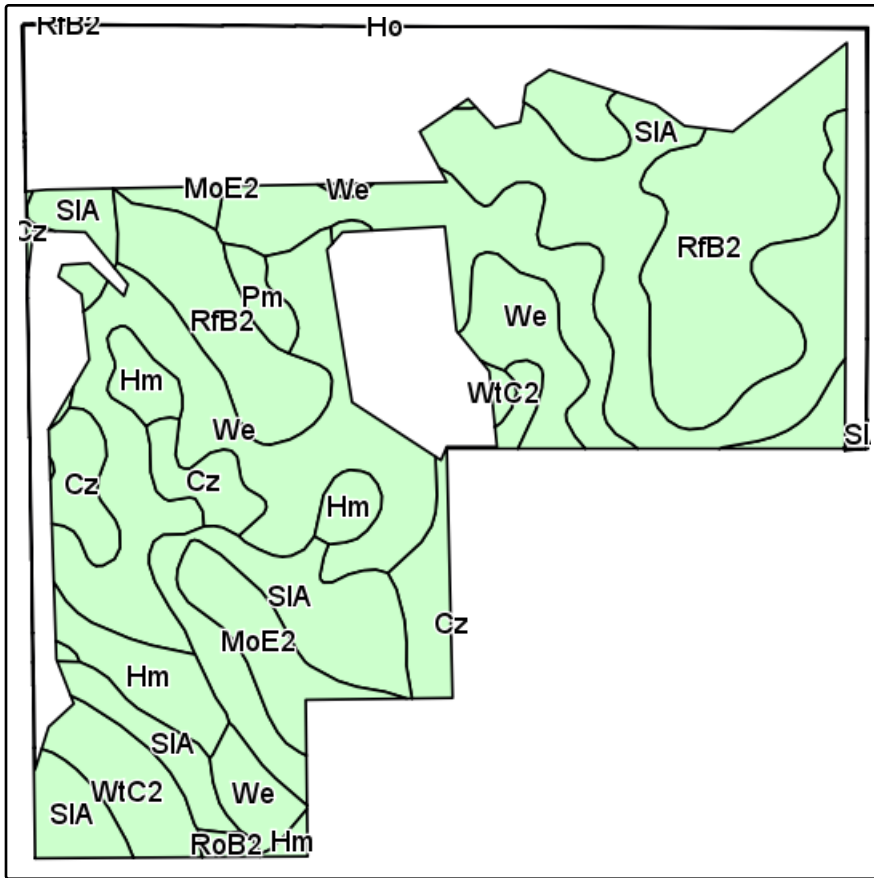
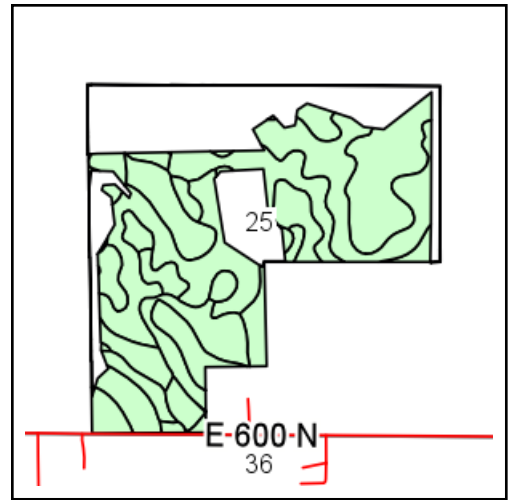


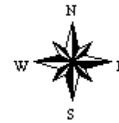
Soils Map



Field borders provided by Farm Service Agency as of 5/21/2008.
Soils data provided by USDA and NRCS.



State: **Indiana**
County: **Warren**
Location: **25-23N-8W**
Township: **Pine**
Acres: **82.71**
Date: **10/31/2013**



Maps provided by:



©AgriData, Inc 2013
www.AgriDataInc.com

Code	Soil Description	Acres	Percent of field	Non-Irr Class	Corn	Soybeans	Winter wheat
SIA	Starks silt loam, till substratum, 0 to 2 percent slopes	21.76	26.3%	IIw	165	54	74
We	Wallkill variant silty clay loam	18.32	22.1%	IIIw	165	44	66
RfB2	Rainsville-Williamstown-Rockfield silt loams, 2 to 6 percent slopes, eroded	16.84	20.4%	Ile	142	50	64
Cz	Cyclone silty clay loam	13.22	16.0%	IIw	190	54	76
Hm	Houghton muck, drained	4.62	5.6%	IIIw	155	42	62
WtC2	Williamstown-Rainsville silt loams, 6 to 12 percent slopes, eroded	3.89	4.7%	IIIe	130	46	59
MoE2	Miami loam, 15 to 25 percent slopes, eroded	2.88	3.5%	VIe			
Pm	Peotone silty clay loam, pothole	0.86	1.0%	IIw	165	44	66
RoB2	Rockfield silt loam, 2 to 6 percent slopes, eroded	0.32	0.4%	Ile	150	53	68
Weighted Average					156.3	47.9	66.5