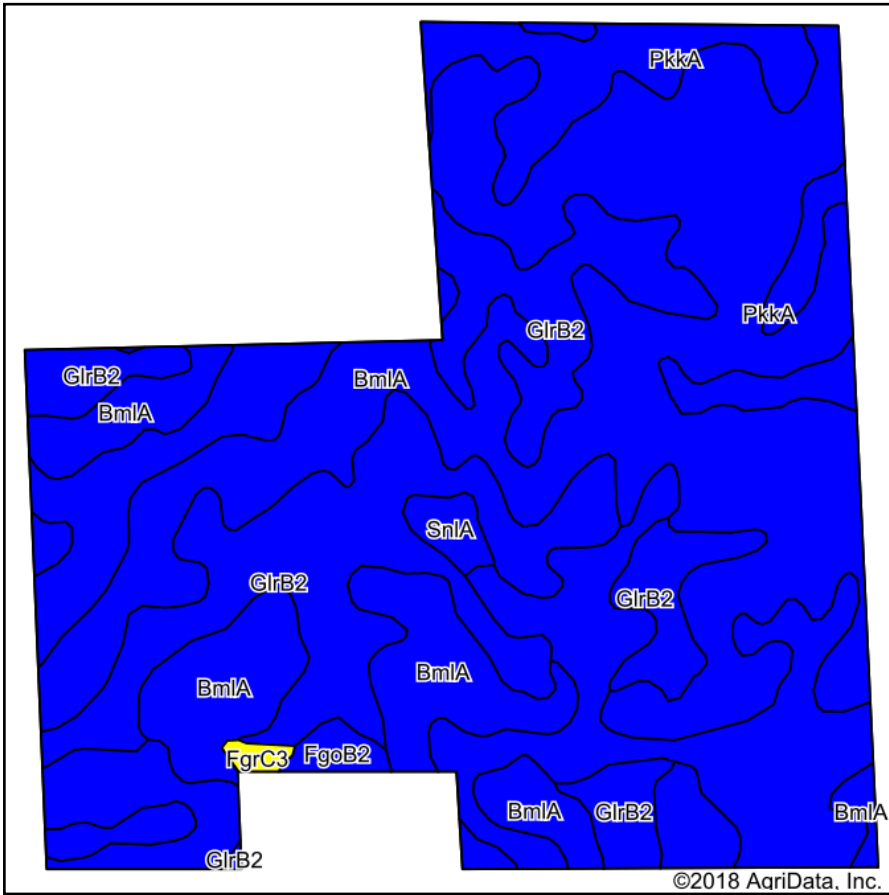
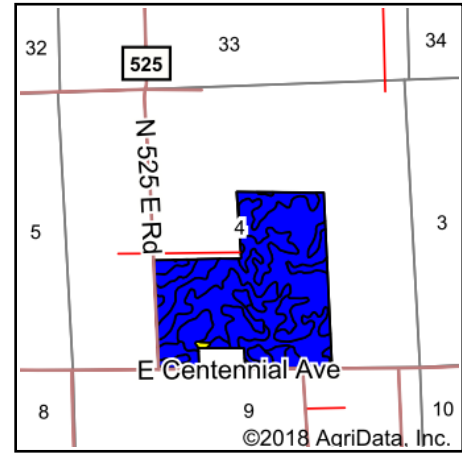


# Soils Map



Soils data provided by USDA and NRCS.

©2018 AgriData, Inc.



State: **Indiana**  
 County: **Delaware**  
 Location: **4-20N-11E**  
 Township: **Liberty**  
 Acres: **125.37**  
 Date: **4/30/2018**



Maps Provided By:



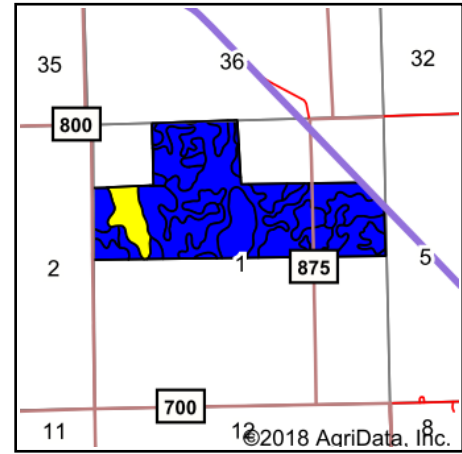
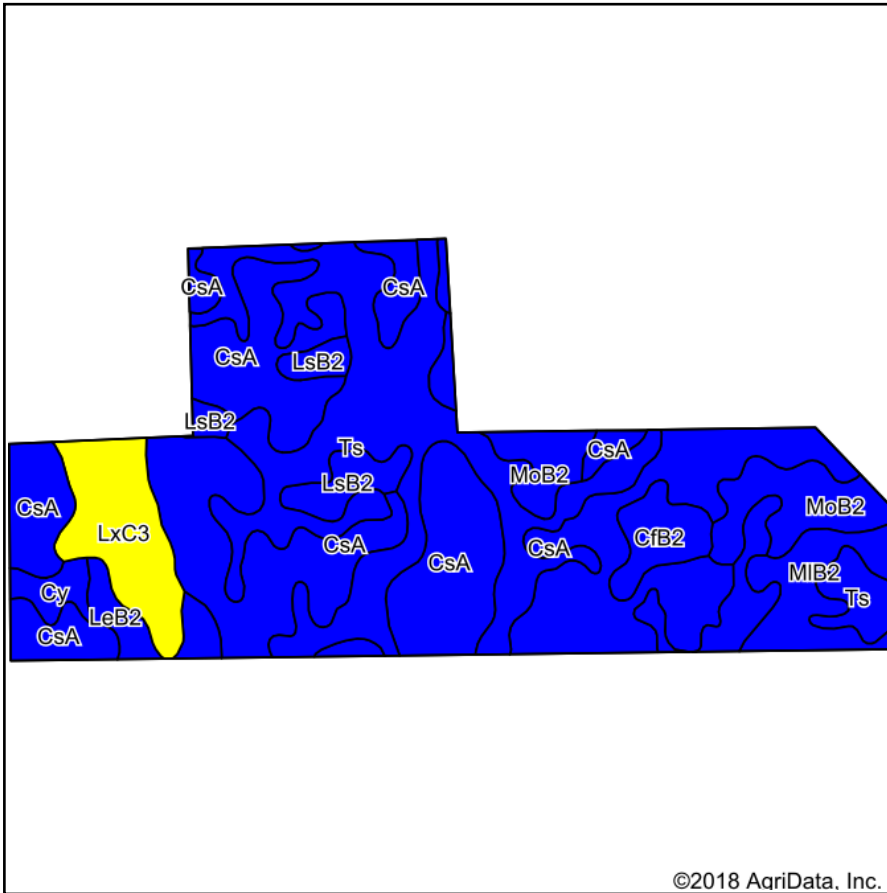
## Area Symbol: IN035, Soil Area Version: 22

Code	Soil Description	Acres	Percent of field	Non-Irr Class Legend	Water Table	Restrictive Layer	Soil Drainage	Non-Irr Class *c	Winter wheat	Corn	Soybeans
BmlA	Blount-Del Rey silt loams, 0 to 1 percent slopes	62.57	49.9%		0.5ft.	3.5ft. (Densic material)	Somewhat poorly drained	IIw	63	141	46
Pkka	Pewamo silty clay loam, 0 to 1 percent slopes	31.81	25.4%		0.5ft.	> 6.5ft.	Very poorly drained	IIw	64	157	47
GlrB2	Glynwood silt loam, 1 to 4 percent slopes, eroded	28.69	22.9%		1.5ft.	2.5ft. (Densic material)	Moderately well drained	Ile	57	129	44
SnIA	Southwest silt loam, 0 to 1 percent slopes	1.03	0.8%		0.5ft.	> 6.5ft.	Poorly drained	IIw	59	163	48
FgoB2	Fox-Muncie complex, 2 to 6 percent slopes, eroded	0.89	0.7%		> 6.5ft.	2.6ft. (Strongly contrasting textural stratification)	Well drained	Ile	57	114	40
FgrC3	Fox-Muncie clay loams, 6 to 12 percent slopes, severely eroded	0.38	0.3%		> 6.5ft.	1.9ft. (Strongly contrasting textural stratification)	Well drained	IVe	47	95	33
<b>Weighted Average</b>									<b>61.8</b>	<b>142.2</b>	<b>45.7</b>

\*c: Using Capabilities Class Dominant Condition Aggregation Method

Soils data provided by USDA and NRCS.

# Soils Map



State: **Indiana**  
 County: **Henry**  
 Location: **1-18N-11E**  
 Township: **Stoney Creek**  
 Acres: **196.81**  
 Date: **4/30/2018**



Soils data provided by USDA and NRCS.

©2018 AgriData, Inc.

## Area Symbol: IN065, Soil Area Version: 19

Code	Soil Description	Acres	Percent of field	Non-Irr Class Legend	Water Table	Restrictive Layer	Soil Drainage	Non-Irr Class *c	Corn	Soybeans	Winter wheat
CsA	Crosby silt loam, stony subsoil, 0 to 3 percent slopes	88.74	45.1%		1.2ft.	2.1ft. (Densic material)	Somewhat poorly drained	IIw	136	45	61
Ts	Treaty silt loam, stony subsoil	53.58	27.2%		0.5ft.	> 6.5ft.	Poorly drained	IIw	185	53	74
MoB2	Miamian silt loam, stony subsoil, 2 to 6 percent slopes, eroded	14.15	7.2%		2.7ft.	2.8ft. (Densic material)	Moderately well drained	Ile	118	41	53
LxC3	Losantville clay loam, stony subsoil, 6 to 12 percent slopes, severely eroded	12.96	6.6%		1ft.	1ft. (Densic material)	Moderately well drained	IVe	113	39	50
MIB2	Miami silt loam, gravelly substratum, 2 to 6 percent slopes, eroded	8.58	4.4%		> 6.5ft.	4.9ft. (Strongly contrasting textural stratification)	Well drained	Ile	126	45	63
LsB2	Losantville silt loam, stony subsoil, 2 to 6 percent slopes, eroded	6.69	3.4%		1.8ft.	1.7ft. (Densic material)	Moderately well drained	Ile	121	43	54
CfB2	Celina silt loam, stony subsoil, 2 to 6 percent slopes, eroded	5.22	2.7%		2ft.	2.8ft. (Densic material)	Moderately well drained	Ile	129	45	57
LeB2	Losantville silt loam, 2 to 6 percent slopes, eroded	4.29	2.2%		1.8ft.	1.3ft. (Densic material)	Moderately well drained	Ile	121	43	54
Cy	Cyclone silty clay loam, 0 to 2 percent slopes	2.60	1.3%		0.2ft.	> 6.5ft.	Poorly drained	IIw	185	65	75
<b>Weighted Average</b>									<b>145.7</b>	<b>46.6</b>	<b>63</b>

\*c: Using Capabilities Class Dominant Condition Aggregation Method

Soils data provided by USDA and NRCS.