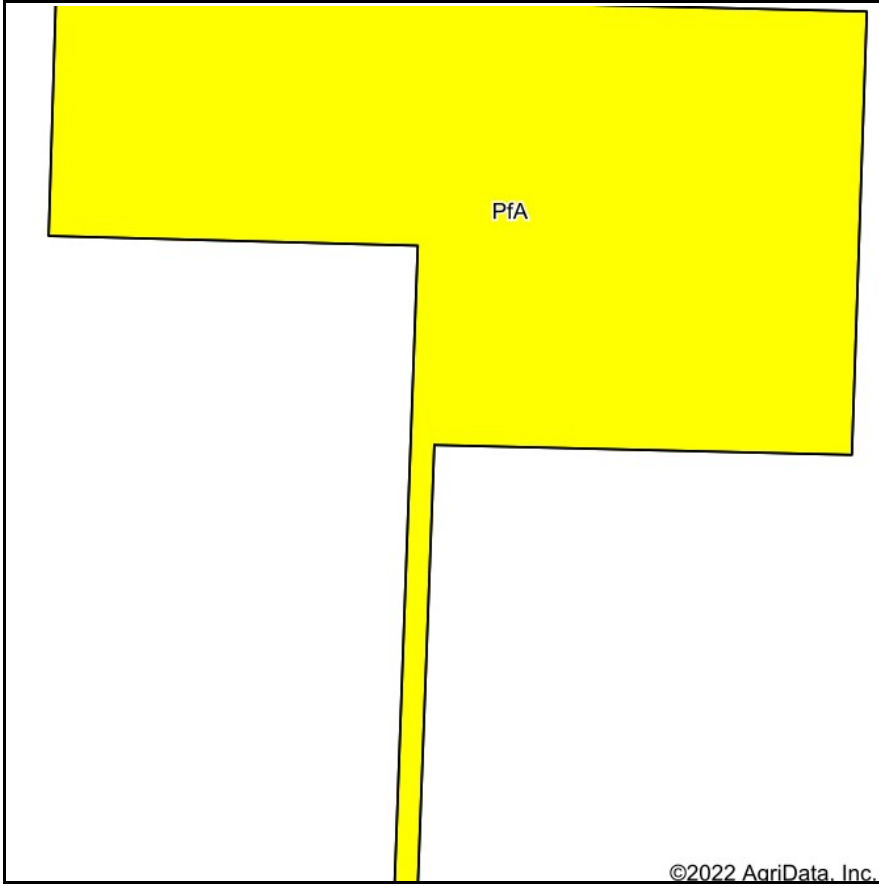
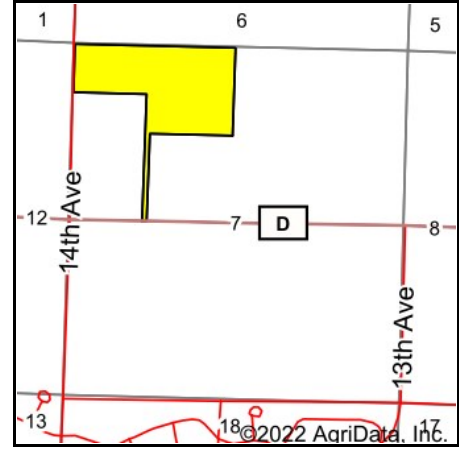


Soils Map



Soils data provided by USDA and NRCS.

©2022 AgriData, Inc.



State: **Wisconsin**
 County: **Adams**
 Location: **7-20N-6E**
 Township: **Rome**
 Acres: **60.32**
 Date: **9/15/2022**



Maps Provided By:



© AgriData, Inc. 2021

www.AgriDataInc.com



Area Symbol: WI001, Soil Area Version: 21

Code	Soil Description	Acres	Percent of field	Non-Irr Class Legend	Soil Drainage	Non-Irr Class *c	Irr Class *c	Corn Bu	Soybeans Bu	*n NCCPI Overall	*n NCCPI Corn	*n NCCPI Soybeans
PfA	Plainfield sand, 0 to 2 percent slopes	60.32	100.0%		Excessively drained	IVs	IIIs	3	1	29	28	22
Weighted Average						4.00	2.00	3	1	*n 29	*n 28	*n 22

*n: The aggregation method is "Weighted Average using all components"

*c: Using Capabilities Class Dominant Condition Aggregation Method