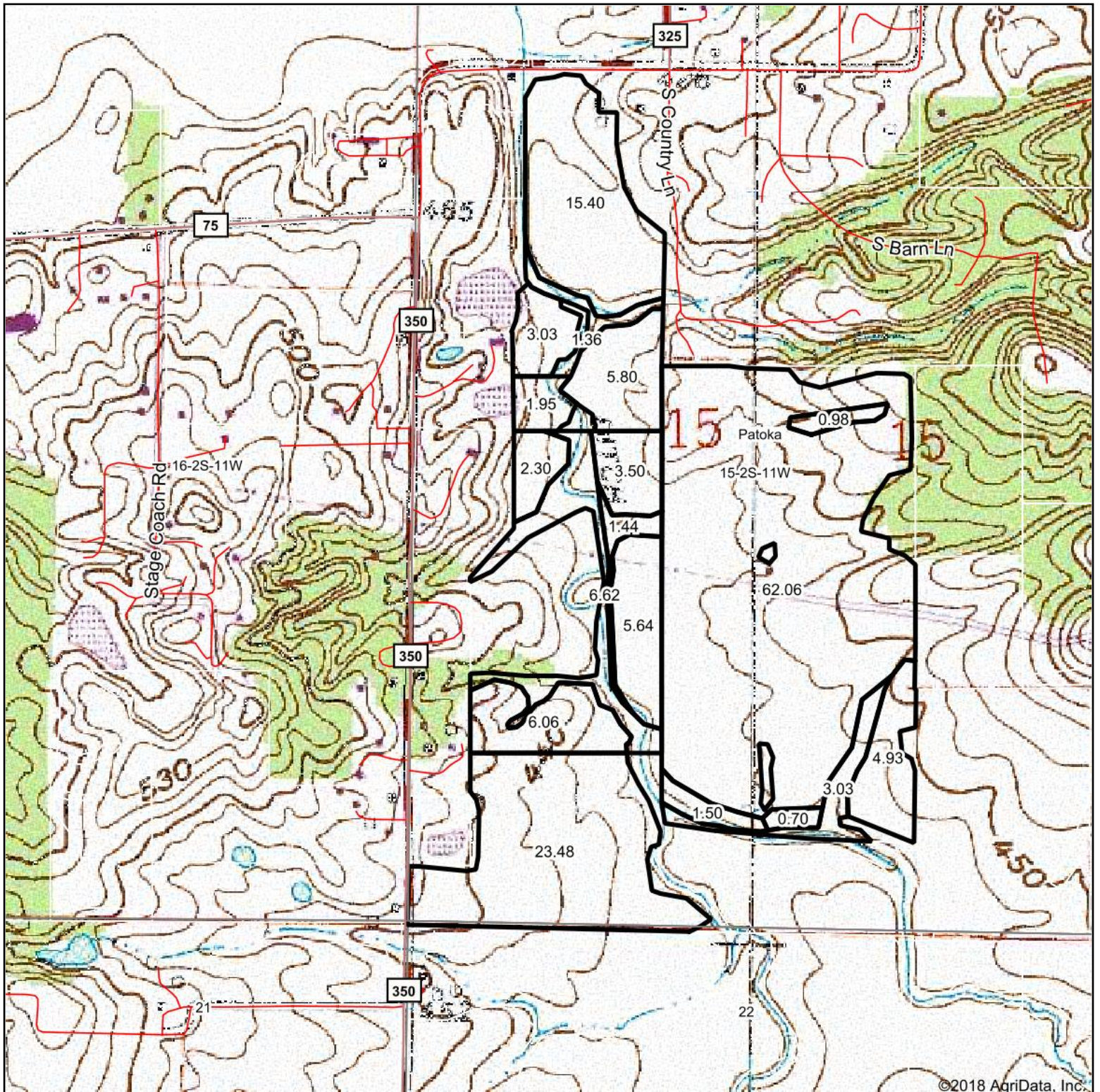


Topography Map

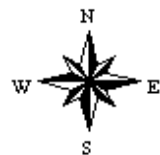


©2018 AgriData, Inc.

map center: 38° 20' 21.06, -87° 37' 43.85

0ft 830ft 1660ft

15-2S-11W
Gibson County
Indiana



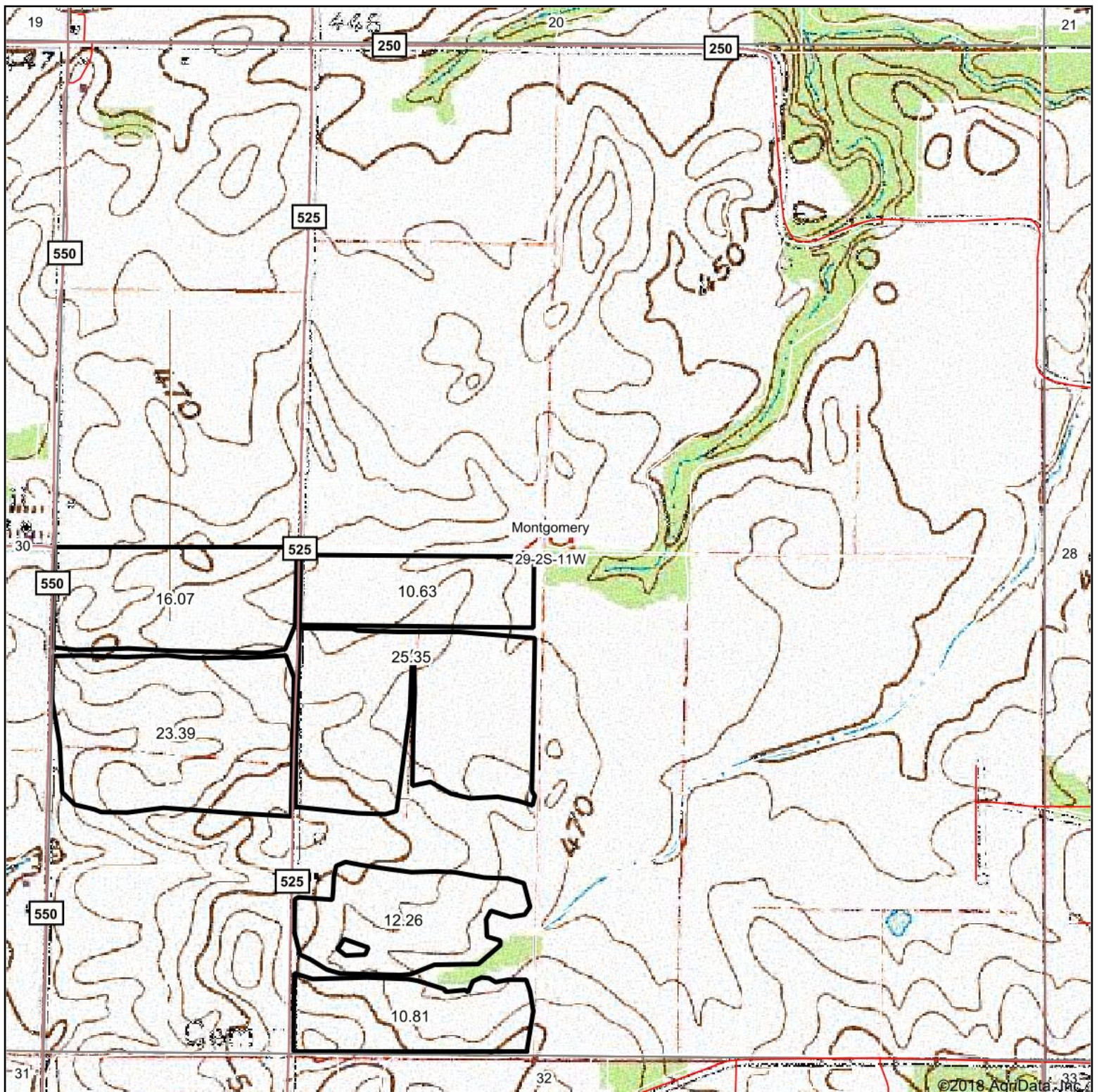
7/2/2018



Maps Provided By:



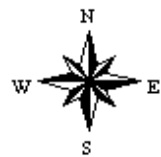
Topography Map



map center: 38° 18' 41.94, -87° 39' 34.86

0ft 823ft 1647ft

29-2S-11W
Gibson County
Indiana



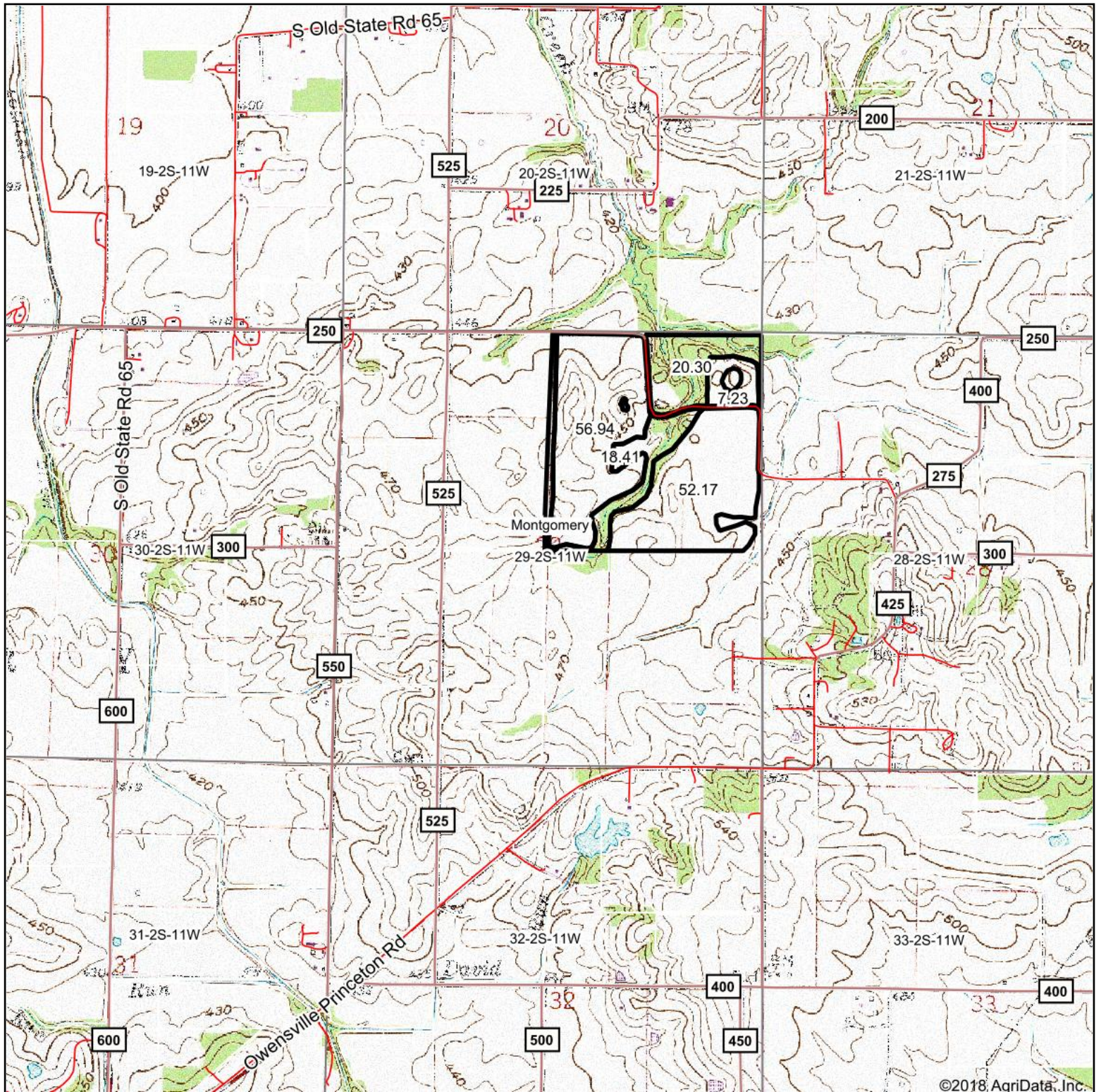
7/2/2018



Maps Provided By:



Topography Map



©2018 AgriData, Inc.

map center: 38° 18' 41.93, -87° 39' 34.84

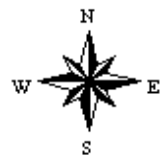
0ft 1923ft 3845ft



Maps Provided By:

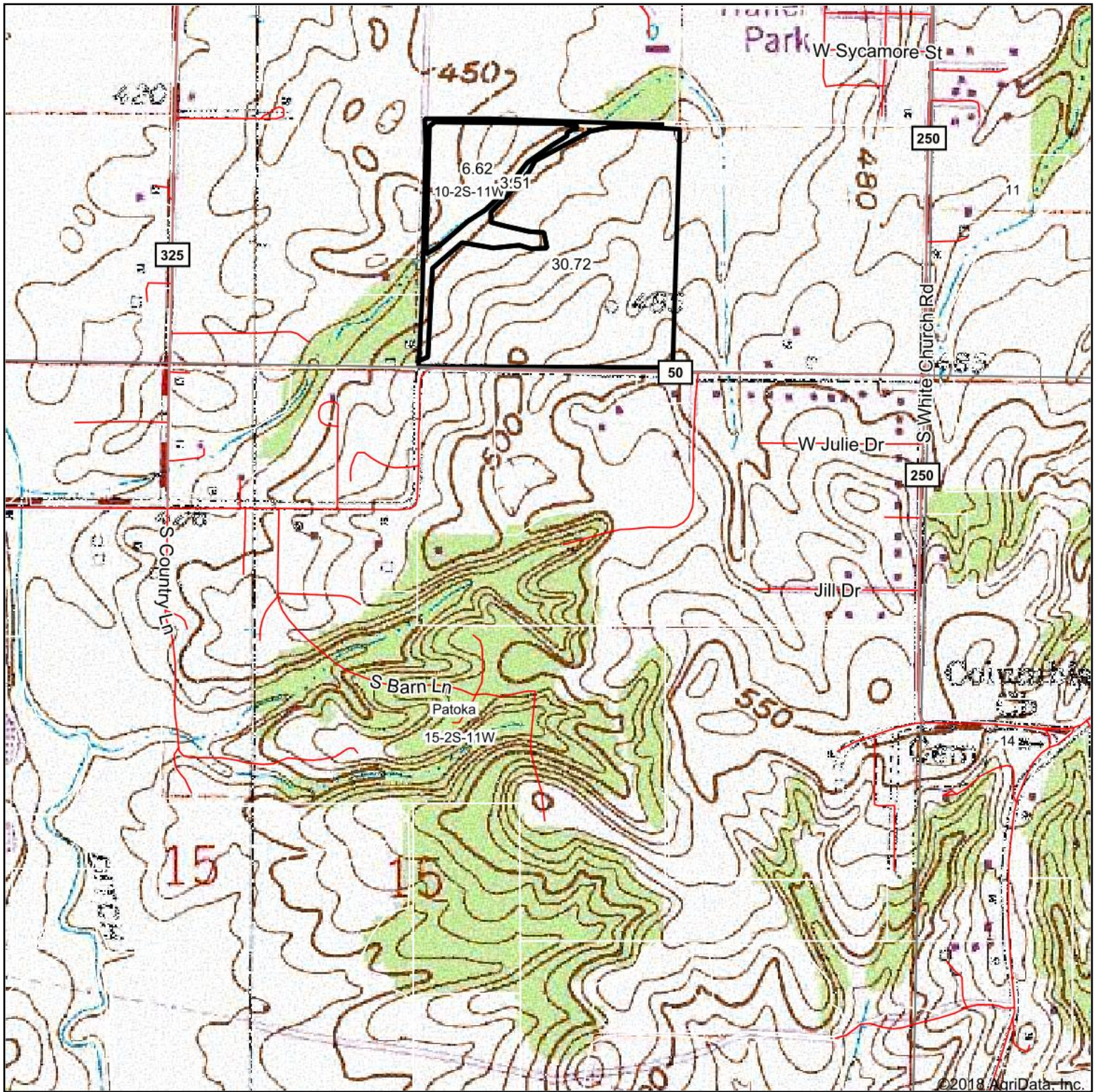


29-2S-11W
Gibson County
Indiana



7/2/2018

Topography Map



map center: 38° 20' 44.43, -87° 37' 10.37

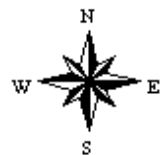
0ft 830ft 1660ft



Maps Provided By:

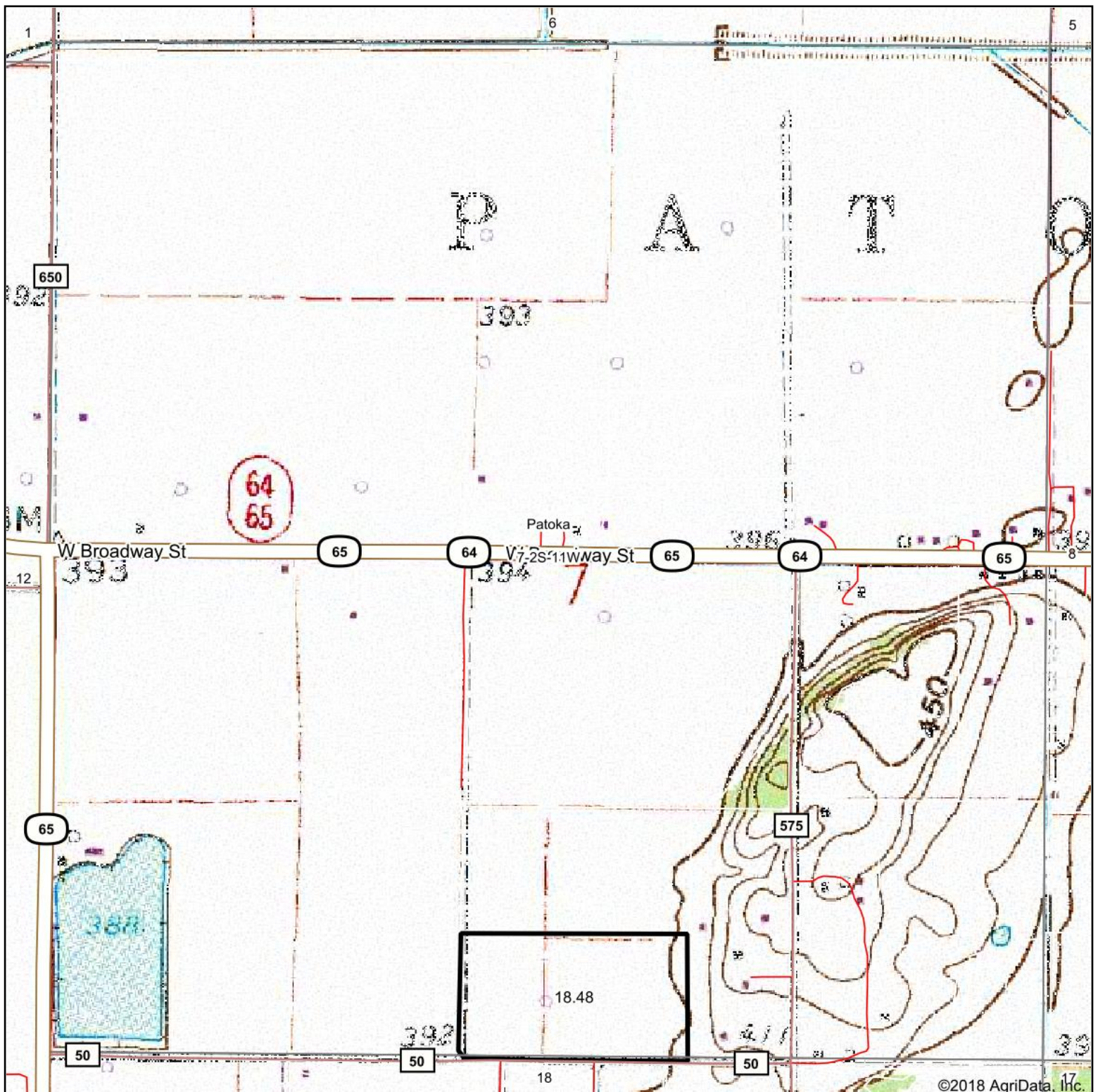


15-2S-11W
Gibson County
Indiana



7/2/2018

Topography Map



©2018 AgriData, Inc.

map center: 38° 21' 21.41, -87° 40' 40.23

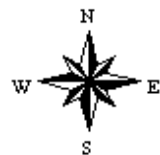
A number line starting at 0 and ending at 1640. There are tick marks at 0, 410, 820, 1230, and 1640. The segments are labeled as follows: 0 to 410 is 410ft, 410 to 820 is 410ft, 820 to 1230 is 820ft, and 1230 to 1640 is 410ft.



Maps Provided By:

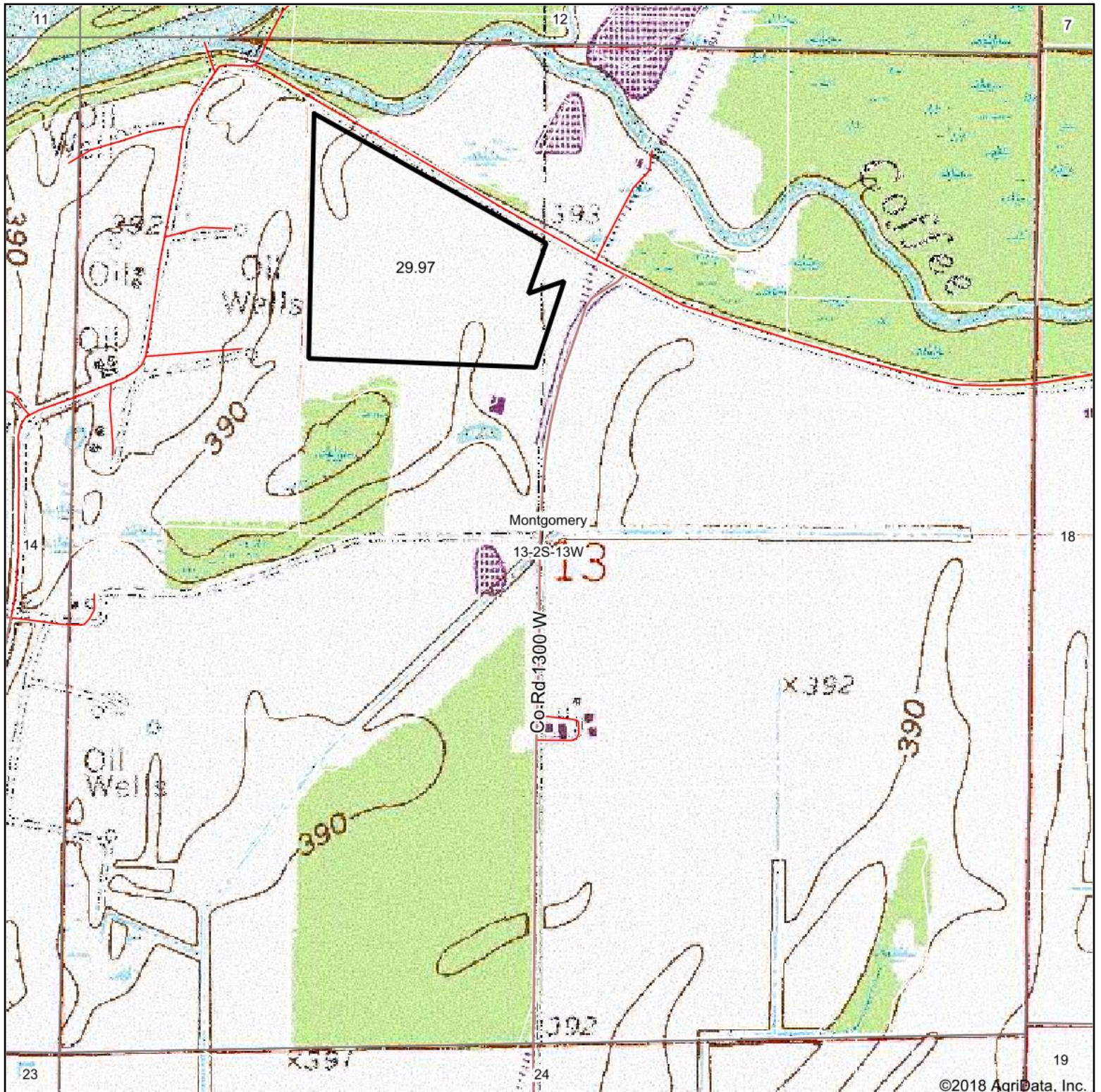


7-2S-11W
Gibson County
Indiana



7/2/2018

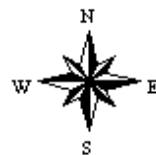
Topography Map



map center: 38° 20' 27.37, -87° 48' 31.47

0ft 853ft 1706ft

13-2S-13W
Gibson County
Indiana



7/2/2018



Maps Provided By:

