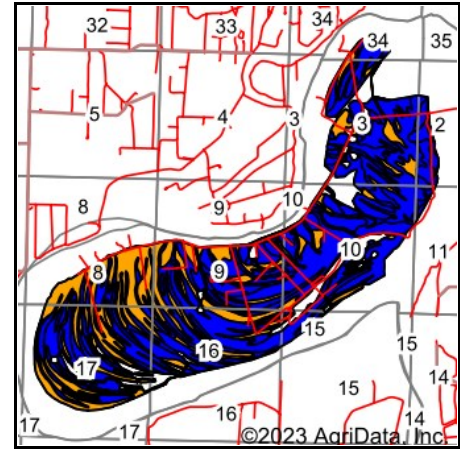
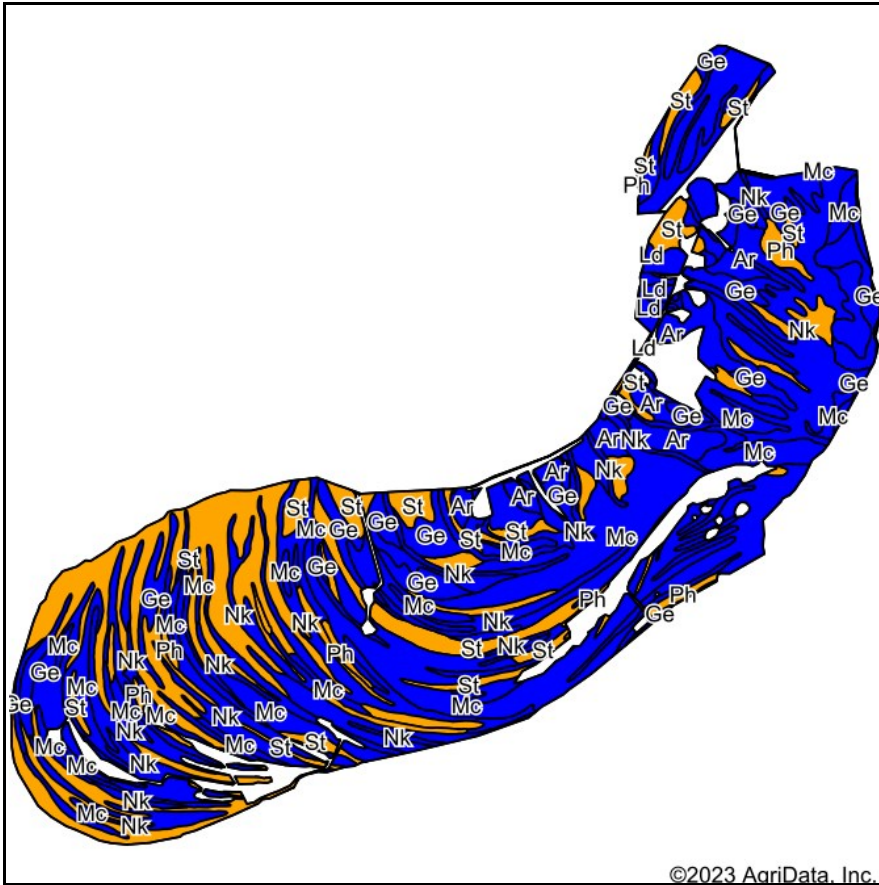


# Soils Map



State: **Indiana**  
 County: **Posey**  
 Location: **9-5S-14W**  
 Township: **Harmony**  
 Acres: **2051.53**  
 Date: **4/13/2023**



Maps Provided By:



Soils data provided by USDA and NRCS.

©2023 AgriData, Inc.

© AgriData, Inc. 2023

www.AgriDataInc.com

Area Symbol: IN129, Soil Area Version: 22

Code	Soil Description	Acres	Percent of field	Non-Irr Class Legend	Water Table	Restrictive Layer	Soil Drainage	Non-Irr Class *c	Corn Bu	Soybeans Bu	Winter wheat Bu	*n NCCPI Corn	*n NCCPI Soybeans
Mc	McAdoo silt loam, frequently flooded	545.38	26.6%		> 6.5ft.	> 6.5ft.	Well drained	Ilw	120	42		78	87
Nk	Newark silty clay loam, frequently flooded	518.42	25.3%		0.5ft.	> 6.5ft.	Somewhat poorly drained	Ilw	125	40	3	87	81
St	Stonelick fine sandy loam, frequently flooded	461.65	22.5%		> 6.5ft.	> 6.5ft.	Well drained	Illw	80	28		56	57
Ge	Genesee loam, frequently flooded	304.11	14.8%		> 6.5ft.	> 6.5ft.	Well drained	Ilw	120	42	1	69	70
Ar	Armiesburg silt loam, frequently flooded	124.69	6.1%		> 6.5ft.	> 6.5ft.	Well drained	Ilw	130	42	2	90	80
Ph	Petrolia silty clay loam, 0 to 2 percent slopes, frequently flooded	65.65	3.2%		0ft.	> 6.5ft.	Poorly drained	Illw	131	40	50	55	79
Ld	Landes sandy loam, occasionally flooded	31.63	1.5%		> 6.5ft.	> 6.5ft.	Well drained	Ilw	105	33	53	73	61
<b>Weighted Average</b>								<b>2.26</b>	<b>113</b>	<b>38.1</b>	<b>3.4</b>	<b>*n 73.9</b>	<b>*n 75.1</b>

Soils data provided by USDA and NRCS is "Weighted Average using all components"

\*c: Using Capabilities Class Dominant Condition Aggregation Method