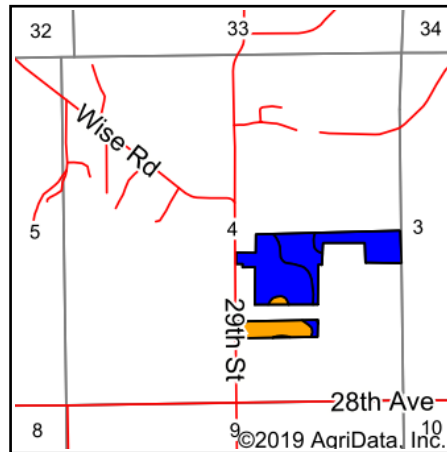
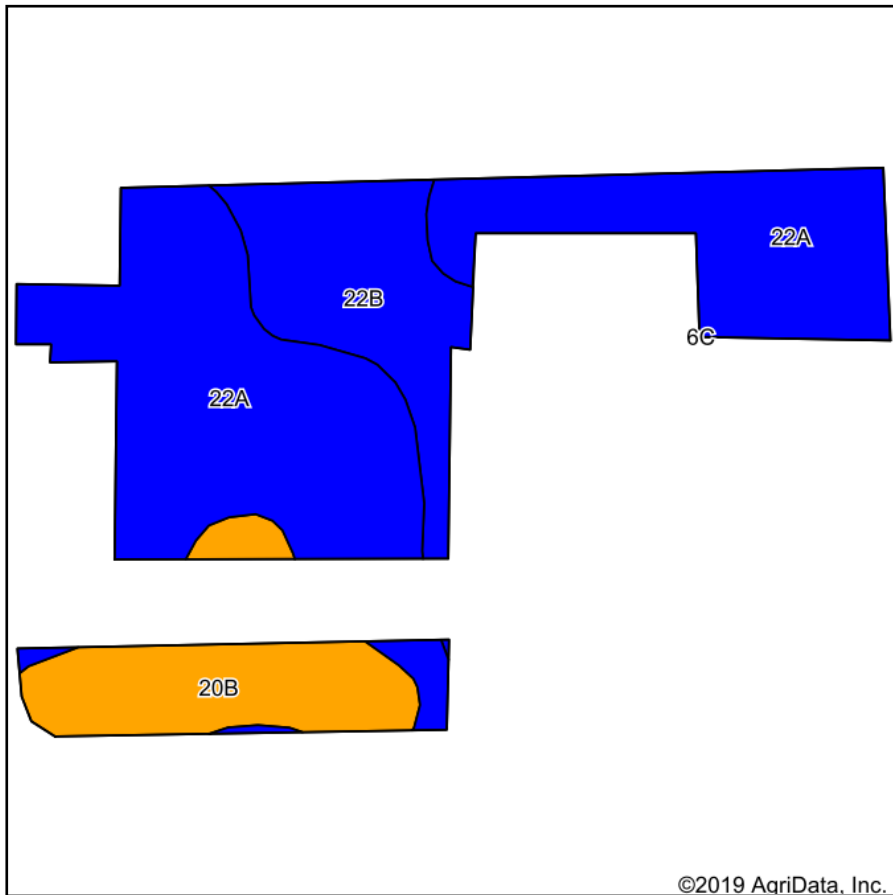
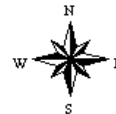


Soils Map



State: **Michigan**
 County: **Van Buren**
 Location: **4-2S-13W**
 Township: **Almena**
 Acres: **43.09**
 Date: **5/18/2020**



Soils data provided by USDA and NRCS.

©2019 AgriData, Inc.

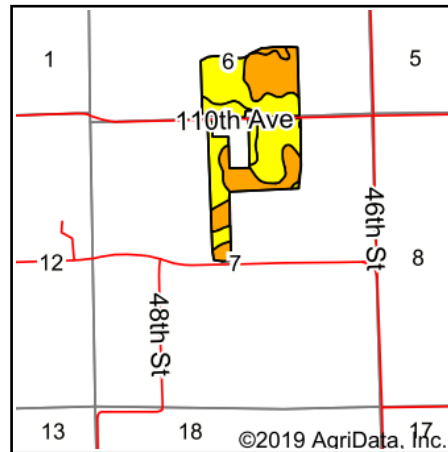
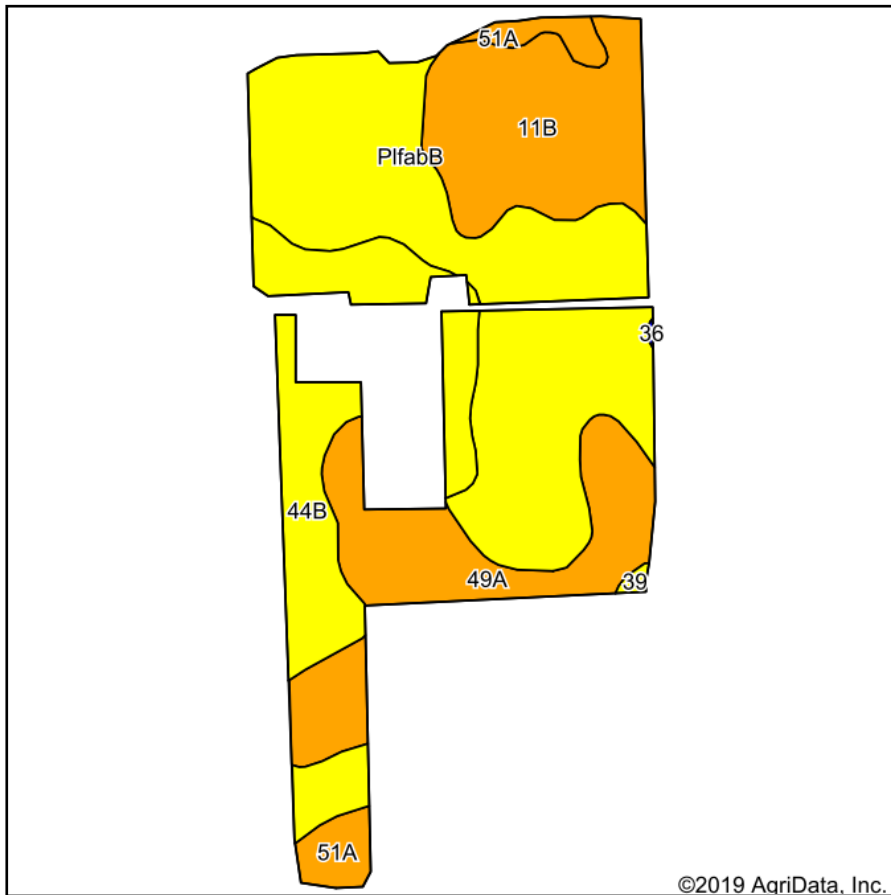
Area Symbol: MI159, Soil Area Version: 15										
Code	Soil Description	Acres	Percent of field	Non-Irr Class Legend	Non-Irr Class *c	Irr Class *c	Cor n	*n NCCPI Overall	*n NCCPI Soybeans	
22A	Kalamazoo loam, 0 to 2 percent slopes	27.72	64.3%		IIs	IIs	1	66	48	
22B	Kalamazoo loam, 2 to 6 percent slopes	8.20	19.0%		Ile	Ile	1	65	48	
20B	Spinks loamy sand, 0 to 6 percent slopes	7.17	16.6%		IIIs	IIIs		49	30	
Weighted Average								0.8	*n 63	*n 45

*n: The aggregation method is "Weighted Average using major components"

*c: Using Capabilities Class Dominant Condition Aggregation Method

Soils data provided by USDA and NRCS.

Soils Map



State: **Michigan**
 County: **Allegan**
 Location: **7-1N-14W**
 Township: **Cheshire**
 Acres: **95.12**
 Date: **5/18/2020**



Soils data provided by USDA and NRCS.

©2019 AgriData, Inc.

© AgriData, Inc. 2019

www.AgriDataInc.com

Area Symbol: MI005, Soil Area Version: 17

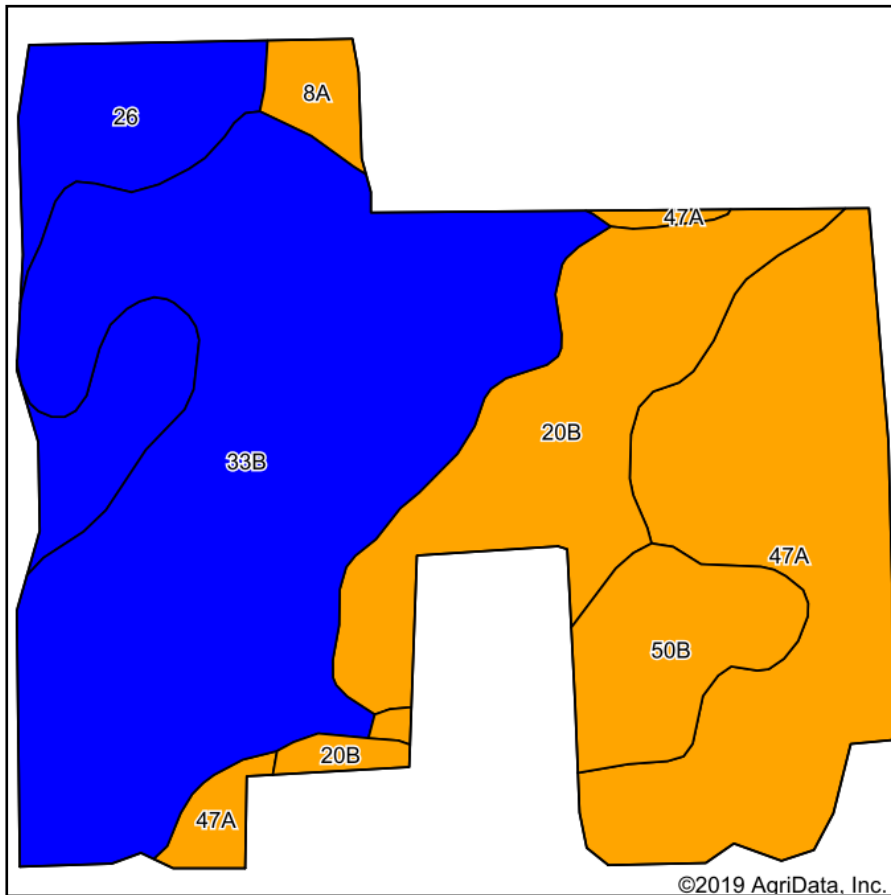
Code	Soil Description	Acres	Percent of field	Non-Irr Class Legend	Water Table	Non-Irr Class *c	Irr Class *c	Alfalfa hay	Alfalfa hay Irrigated	Corn	Corn Irrigated	Corn silage	Corn silage Irrigated	Oats	Soybeans	Soybeans Irrigated	Winter wheat	*n NCCPI Overall	*n NCCPI Soybeans	
PifabB	Plainfield sand, lake plain, 0 to 6 percent slopes	39.81	41.9%		> 6.5ft.	IVs													35	
44B	Chelsea loamy fine sand, 0 to 6 percent slopes	17.76	18.7%		> 6.5ft.	IVs				68				41	23				28	
11B	Oshtemo-Chelsea complex, 0 to 6 percent slopes	16.93	17.8%		> 6.5ft.	IIIls	IIIle	2	8	85	170	14	26	70	28	55	30		54	
49A	Tedrow fine sand, 0 to 4 percent slopes	16.65	17.5%		1.5ft.	IIIls				85						30		35	51	
51A	Thetford loamy fine sand, 0 to 4 percent slopes	3.71	3.9%		1.5ft.	IIlw		3.8		85	148	14	22	65	32		35		53	
39	Granby loamy sand, lake plain, 0 to 2 percent slopes	0.26	0.3%		0ft.	IVw													40	
Weighted Average								0.5	1.4	46	36	3	5.5	22.6	15.8	9.8	12.8	*n 40.6		

*n: The aggregation method is "Weighted Average using major components"

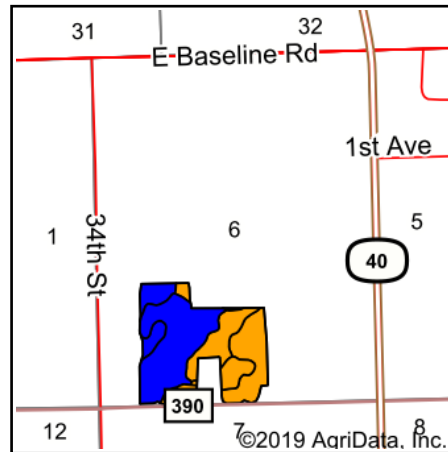
*c: Using Capabilities Class Dominant Condition Aggregation Method

Soils data provided by USDA and NRCS.

Soils Map



Soils data provided by USDA and NRCS.



State: **Michigan**
 County: **Van Buren**
 Location: **6-1S-13W**
 Township: **Pine Grove**
 Acres: **70.97**
 Date: **2/28/2020**



Area Symbol: MI159, Soil Area Version: 15

Code	Soil Description	Acres	Percent of field	Non-Irr Class Legend	Non-Irr Class *c	Irr Class *c	Alfalfa hay	Corn	Corn silage	Oats	Soybeans	Winter wheat	*n NCCPI Overall	*n NCCPI Soybeans	
33B	Tuscola silt loam, 0 to 4 percent slopes	30.77	43.4%	Blue	Ile			100	17	80	32	47	81	79	
47A	Selfridge loamy sand, 0 to 3 percent slopes	16.48	23.2%	Orange	IIIw		4.2	110	18	70	35	42	54	39	
20B	Spinks loamy sand, 0 to 6 percent slopes	10.66	15.0%	Orange	IIIs	IIIs							49	30	
26	Gilford sandy loam, 0 to 1 percent slopes	7.19	10.1%	Blue	IIw			150			42	60	75	55	
50B	Metea loamy fine sand, 1 to 6 percent slopes	4.65	6.6%	Orange	IIIe			85			30	42	57	42	
8A	Morocco loamy sand, lake plain, 0 to 2 percent slopes	1.22	1.7%	Orange	IIIw			102			28	40	43	29	
Weighted Average								1	91.4	11.6	50.9	28.7	39.6	*n 67.1	*n 56.6

*n: The aggregation method is "Weighted Average using major components"

*c: Using Capabilities Class Dominant Condition Aggregation Method

Soils data provided by USDA and NRCS.