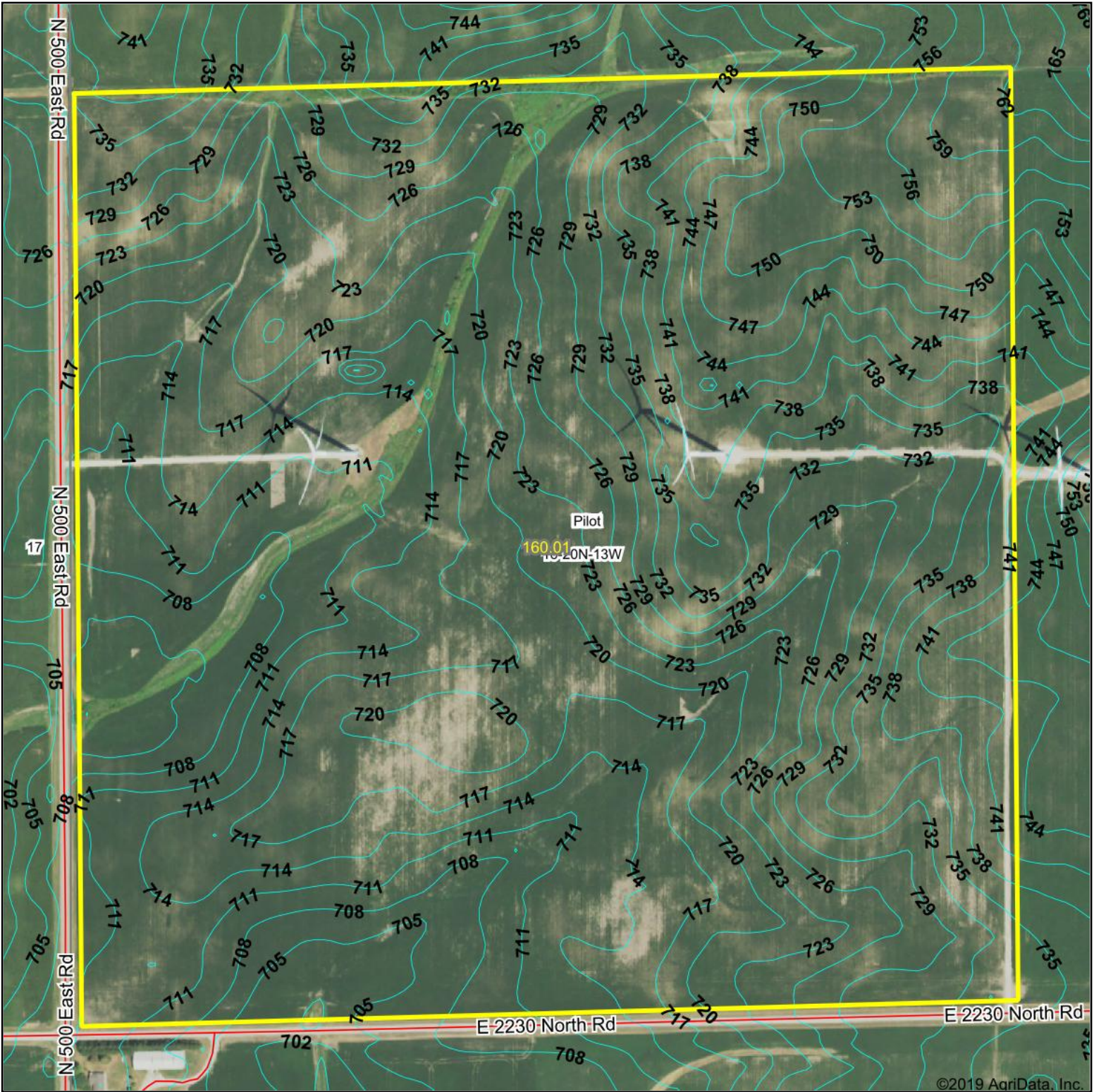


Topography Contours



Maps Provided By:



© AgriData, Inc. 2019

www.AgriDataInc.com

Source: USGS 10 meter dem

Interval: 3.0

Min: 701.2

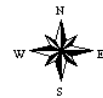
Max: 763.1

Range: 61.9

Average: 727.4

Standard Deviation: 14.6

0ft 436ft 873ft



3/9/2020

16-20N-13W
Vermilion County
Illinois

Map Center: 40° 11' 41.29, -87° 50' 26.5