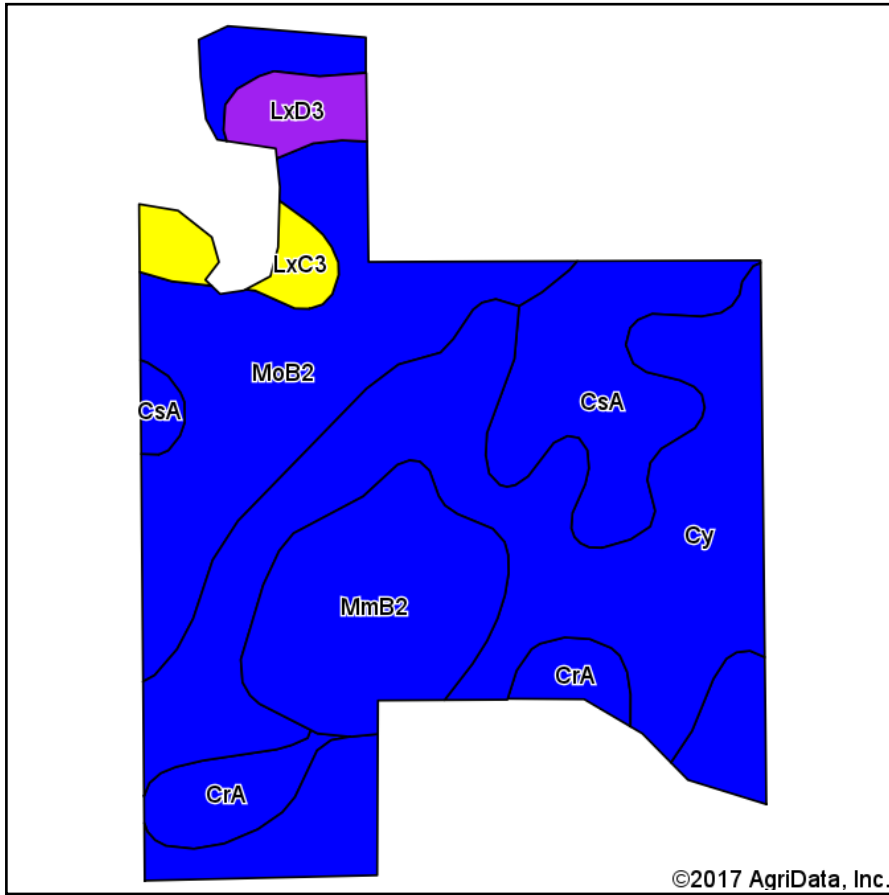
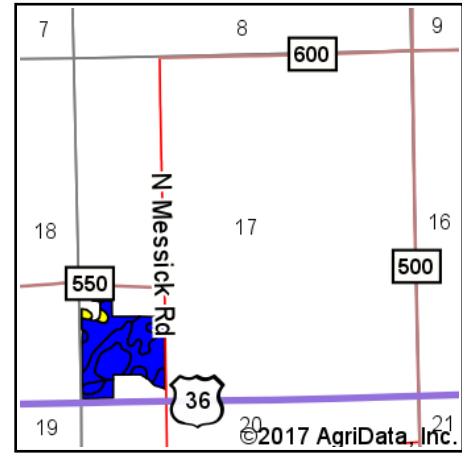


Soils Map



Soils data provided by USDA and NRCS.



State: **Indiana**
 County: **Henry**
 Location: **17-18N-11E**
 Township: **Blue River**
 Acres: **34.12**
 Date: **2/13/2017**



Maps Provided By:



© AgriData, Inc. 2017

www.AgriDataInc.com



Area Symbol: IN065, Soil Area Version: 18

Code	Soil Description	Acres	Percent of field	Non-Irr Class Legend	Water Table	Soil Drainage	Non-Irr Class *c	Corn	Winter wheat	Soybeans
Cy	Cyclone silty clay loam, 0 to 2 percent slopes	12.98	38.0%		0.2ft.	Poorly drained	IIw	184	75	54
MoB2	Miamian silt loam, stony subsoil, 2 to 6 percent slopes, eroded	7.68	22.5%		2.7ft.	Moderately well drained	Ile	118	53	41
CsA	Crosby silt loam, stony subsoil, 0 to 3 percent slopes	5.07	14.9%		1.2ft.	Somewhat poorly drained	IIw	136	61	45
MmB2	Miamian silt loam, New Castle Till Plain, 2 to 6 percent slopes, eroded	4.66	13.7%		3ft.	Well drained	Ile	127	57	45
CrA	Crosby silt loam, 0 to 2 percent slopes	1.84	5.4%		1.5ft.	Somewhat poorly drained	IIw	138	62	46
LxC3	Losantville clay loam, stony subsoil, 6 to 12 percent slopes, severely eroded	0.97	2.8%		1.8ft.	Moderately well drained	Ive	102	46	36
LxD3	Losantville clay loam, stony subsoil, 12 to 18 percent slopes, severely eroded	0.92	2.7%		1.8ft.	Moderately well drained	Vle	90	41	32
Weighted Average								146.9	63.1	47

Area Symbol: IN065, Soil Area Version: 18

*c: Using Capabilities Class Dominant Condition Aggregation Method

Soils data provided by USDA and NRCS.