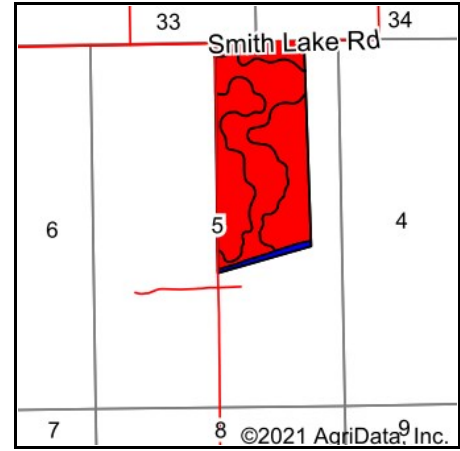
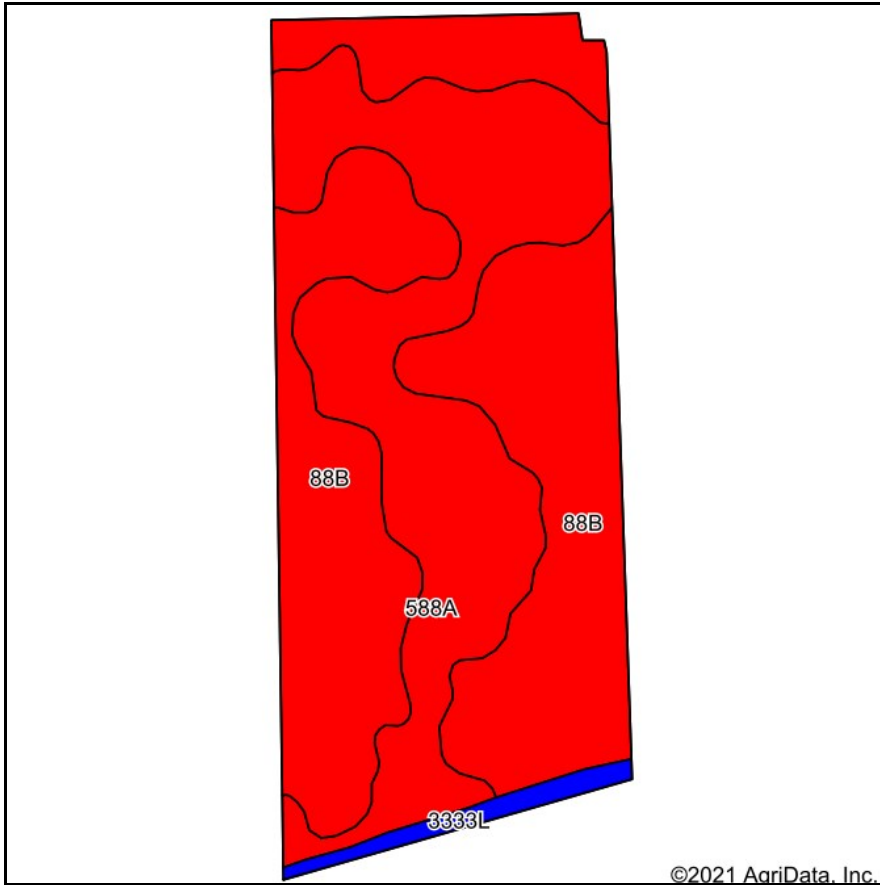


Soils Map



State: **Illinois**
 County: **Scott**
 Location: **5-15N-13W**
 Township: **Naples-Bluffs**
 Acres: **206.82**
 Date: **7/20/2021**



Maps Provided By:



Soils data provided by USDA and NRCS.

Area Symbol: IL171, Soil Area Version: 12

| Code | Soil Description | Acres | Percent of field | Il. State Productivity Index Legend | Water Table | Subsoil rooting a | Corn Bu/A | Soybeans Bu/A | Wheat Bu/A | Oats Bu/A b | Sorghum c Bu/A | Alfalfa d hay, T/A | Grass- legume e hay, T/A | Crop productivity index for optimum management |
|-------------------------|--|--------|------------------|-------------------------------------|-------------|----------------------|--------------|------------------|---------------|-------------------|-------------------|--------------------------|-----------------------------------|--|
| **88B | Sparta loamy sand, Illinois till plain, 2 to 6 percent slopes | 122.01 | 59.0% | | > 6.5ft. | FAV | **118 | **41 | **50 | **57 | 0 | 0.00 | **3.97 | **91 |
| 588A | Sparta loamy sand, loamy substratum, 0 to 2 percent slopes | 79.99 | 38.7% | | > 6.5ft. | FAV | 128 | 41 | 52 | 65 | 0 | 3.01 | 0.00 | 94 |
| 3333L | Wakeland silt loam, 0 to 2 percent slopes, frequently flooded, long duration | 4.82 | 2.3% | | 1.2ft. | FAV | 174 | 56 | 68 | 85 | 0 | 0.00 | 5.14 | 128 |
| Weighted Average | | | | | | | 123.2 | 41.3 | 51.2 | 60.7 | *- | 1.16 | 2.46 | 93 |