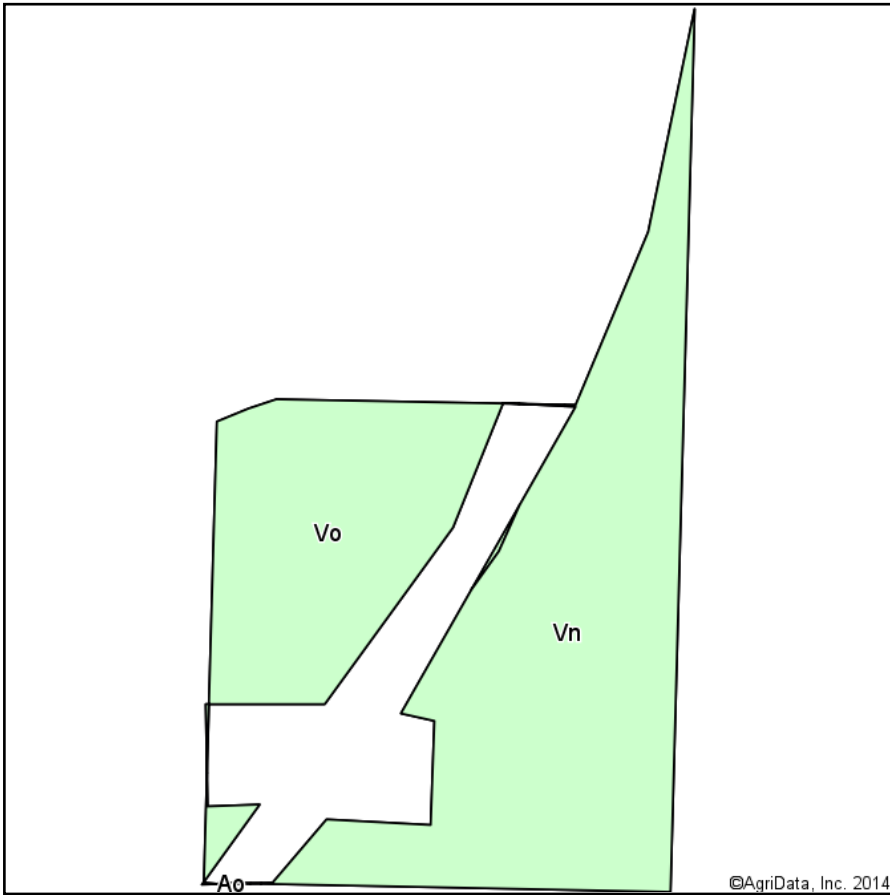
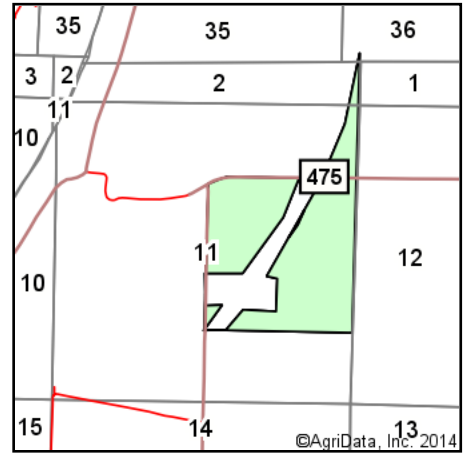


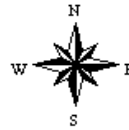
Soil Map



Soils data provided by USDA and NRCS.



State: **Indiana**
 County: **Gibson**
 Location: **11-3S-13W**
 Township: **Wabash**
 Acres: **140.26**
 Date: **2/5/2014**



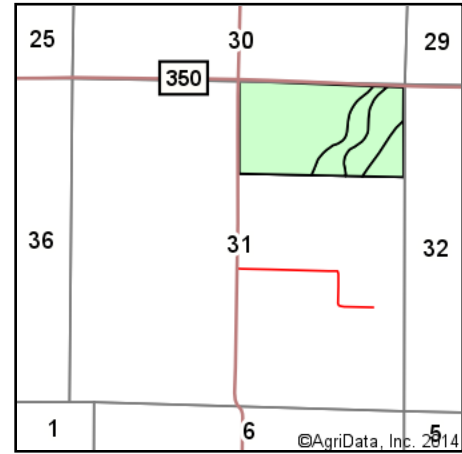
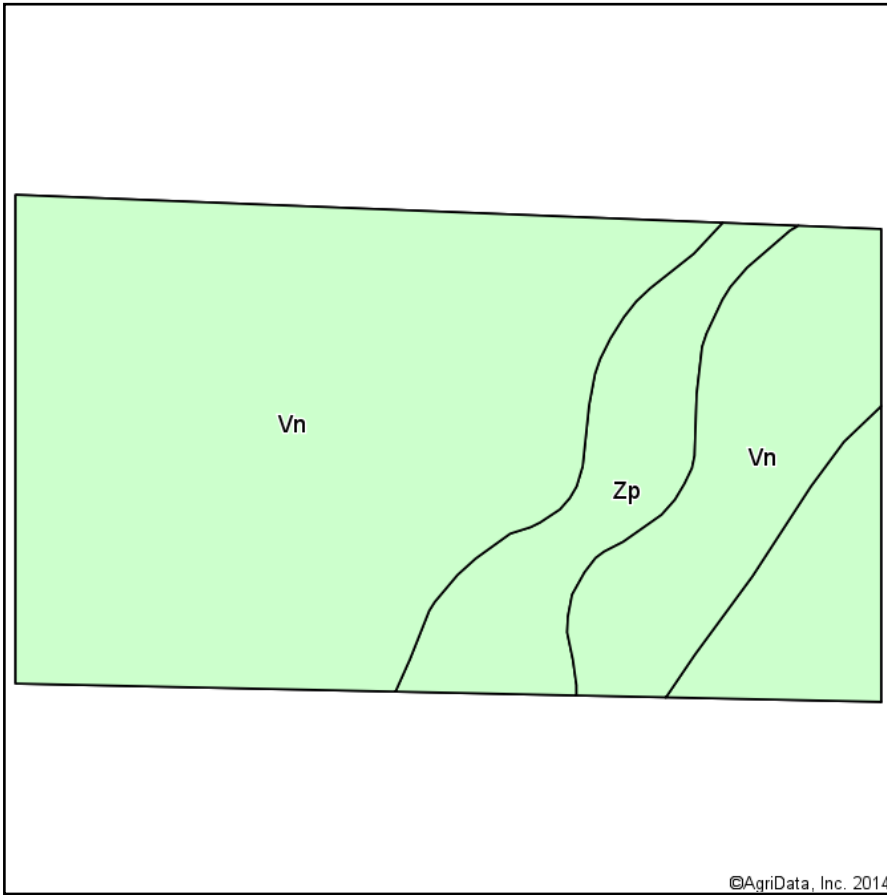
Maps Provided By:

 CUSTOMIZED ONLINE MAPPING
 © AgriData, Inc. 2013 www.AgriDataInc.com

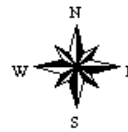
Code	Soil Description	Acres	Percent of field	Non-Irr Class	Corn	Soybeans	Winter wheat
Vn	Vincennes loam	92.02	65.6%	Ilw	160	47	64
Vo	Vincennes silt loam, frequently flooded	48.24	34.4%	Ilw	135	39	
Weighted Average					151.4	44.2	42

Field borders provided by Farm Service Agency as of 5/21/2008. Aerial photography provided by Aerial Photography Field Office.

Soil Map



State: **Indiana**
 County: **Gibson**
 Location: **31-2S-12W**
 Township: **Montgomery**
 Acres: **90.98**
 Date: **2/5/2014**



Maps Provided By:

 CUSTOMIZED ONLINE MAPPING
 © AgriData, Inc. 2013 www.AgriDataInc.com

Soils data provided by USDA and NRCS.

©AgriData, Inc. 2014

Code	Soil Description	Acres	Percent of field	Non-Irr Class	Corn	Soybeans	Winter wheat
Vn	Vincennes loam	72.11	79.3%		160	47	64
Zp	Zipp silty clay	18.87	20.7%		160	40	64
Weighted Average					160	45.5	64

Field borders provided by Farm Service Agency as of 5/21/2008. Aerial photography provided by Aerial Photography Field Office.