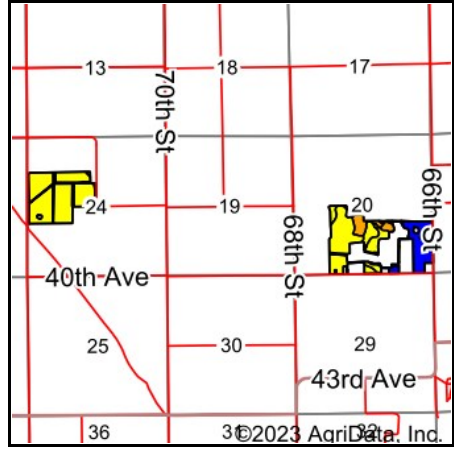
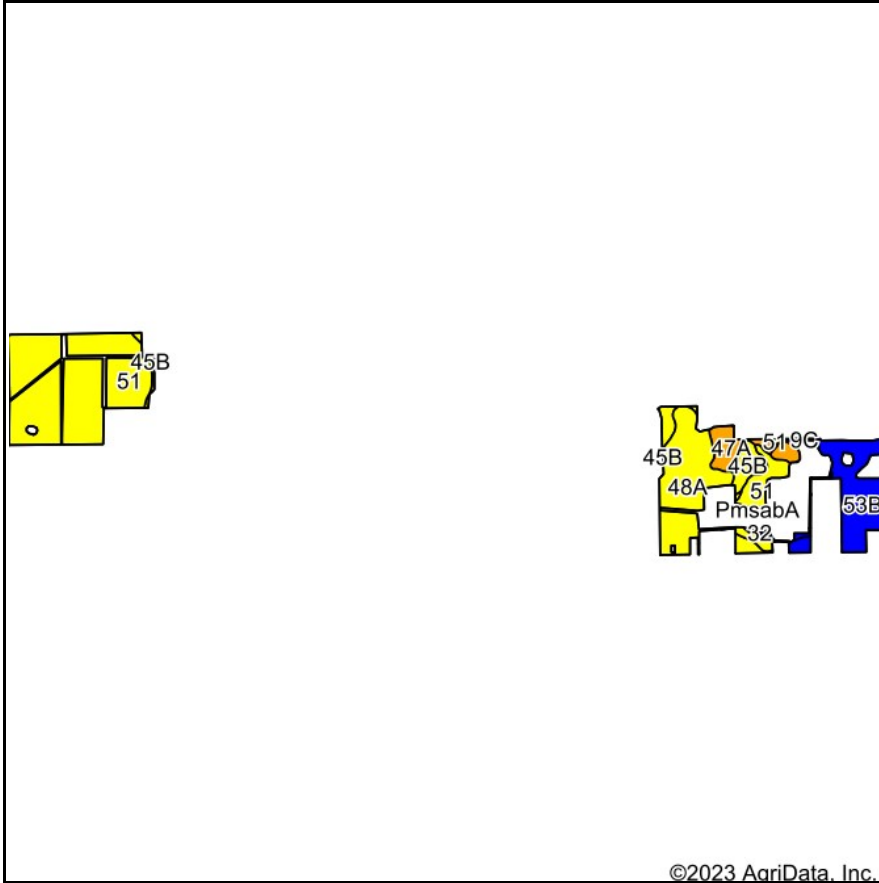


Tillable Soil Map



State: **Michigan**
 County: **Van Buren**
 Location: **19-2S-16W**
 Township: **Bangor**
 Acres: **207.21**
 Date: **12/1/2023**



Maps Provided By:



Area Symbol: MI159, Soil Area Version: 19

Code	Soil Description	Acres	Percent of field	Non-Irr Class Legend	Water Table	Non-Irr Class *c	Corn Bu	Corn Irrigated Bu	Soybeans Bu	Winter wheat Bu	Winter wheat Irrigated Bu	*n NCCPI Corn	*n NCCPI Soybeans
51	Kingsville loamy sand	102.55	49.5%		0ft.	IVw	75		25	30		45	36
48A	Pipestone-Kingsville complex, 0 to 3 percent slopes	45.23	21.8%		1ft.	IVw	65	130		30	45	48	34
53B	Capac loam, Lake Michigan lobe, 0 to 4 percent slopes	32.47	15.7%		0.5ft.	Ile						64	62
45B	Covert sand, 0 to 4 percent slopes	11.24	5.4%		2ft.	IVs	80			40		45	29
47A	Selfridge loamy sand, 0 to 3 percent slopes	9.35	4.5%		0.5ft.	Illw	110		35	42		54	40
19A	Ottokee loamy fine sand, 0 to 3 percent slopes	3.25	1.6%		2ft.	llls	98		36	42		56	38
32	Colwood silt loam	1.72	0.8%		0ft.	llw	140		45	65		71	82
PmsabA	Palms muck, lake moderated, 0 to 1 percent slopes	1.07	0.5%		0ft.	V w						14	16



Code	Soil Description	Acres	Percent of field	Non-Irr Class Legend	Water Table	Non-Irr Class *c	Corn Bu	Corn Irrigated Bu	Soybeans Bu	Winter wheat Bu	Winter wheat Irrigated Bu	*n NCCPI Corn	*n NCCPI Soybeans	
9C	Plainfield sand, lake plain, 6 to 12 percent slopes	0.33	0.2%		> 6.5ft.	Vls						33	24	
Weighted Average							3.62	63.3	28.4	14.9	26.7	9.8	*n 49.2	*n 39.7

*n: The aggregation method is "Weighted Average using all components"

*c: Using Capabilities Class Dominant Condition Aggregation Method