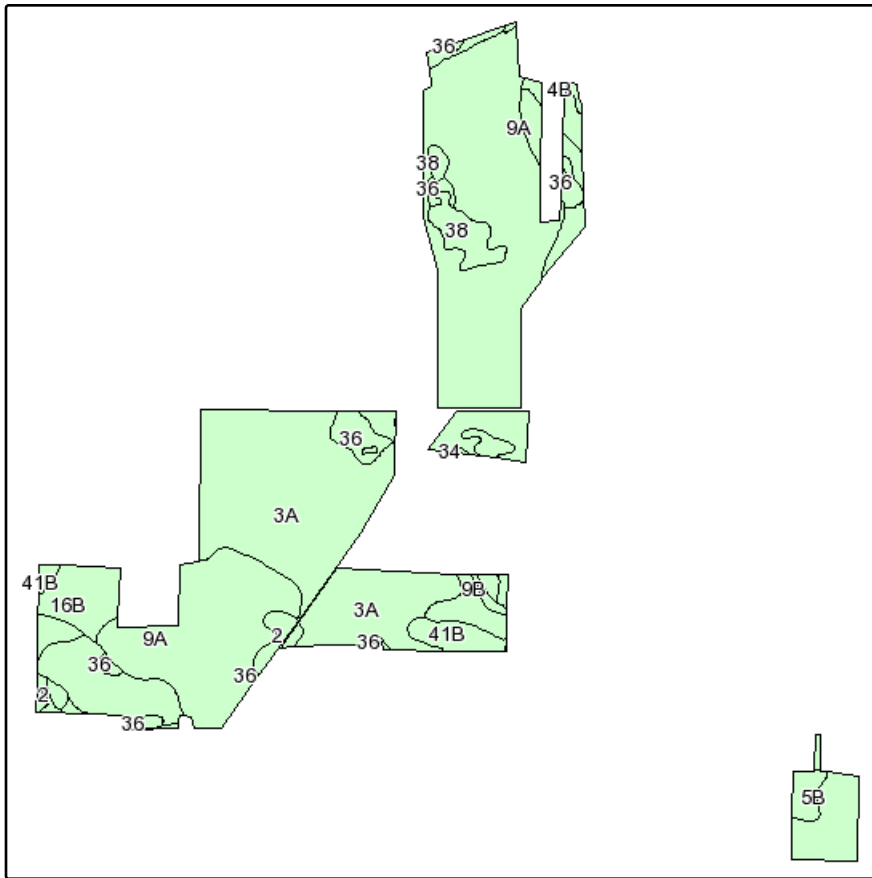
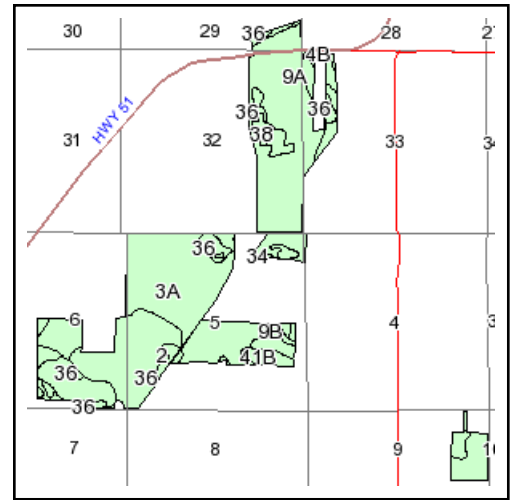


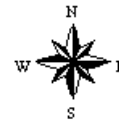
# Soils Map



Fsa borders provided by the Farm Service Agency as of May 23, 2008.  
Soils data provided by USDA and NRCS.



State: **Michigan**  
County: **Cass**  
Location: **009-007S-016W**  
Township: **Pokagon**  
Acres: **753.8**  
Date: **5/17/2011**



Maps provided by:



©AgriData, Inc 2008  
www.AgriDataInc.com

Code	Soil Description	Acres	Percent of field	Non-Irr Class	Irr Class	Corn	Corn Irrigated	Soybeans	Soybeans Irrigated	Winter wheat
3A	Schoolcraft loam, 0 to 2 percent slopes	411.4	54.6%	IIs	IIs	135	180	35	55	60
9A	Kalamazoo loam, 0 to 2 percent slopes	131.6	17.5%	IIs	IIs	110	175	30	55	40
9B	Kalamazoo loam, 2 to 6 percent slopes	64.6	8.6%	Ile	Ile	100	175	30	55	40
5B	Spinks loamy sand, 0 to 6 percent slopes	31.3	4.1%	IIIs	IIIs	75	165	27	50	30
16B	Ormas loamy sand, 0 to 6 percent slopes	25.2	3.3%	IIle		80		28		36
36	Gilford sandy loam	24.5	3.3%	Vw						
38	Napoleon muck	19.4	2.6%	VIw						
41B	Spinks-Oshtemo complex, 2 to 6 percent slopes	15.7	2.1%	IIIs	IIle	75	165	27	50	30
2	Histosols and Aquents, ponded	10.3	1.4%	VIw						
4A	Oshtemo sandy loam, 0 to 2 percent slopes	7.7	1.0%	IIIs	IIIs	110	175	30	57	45
19	Houghton muck	5.8	0.8%	Vw						
16C	Ormas loamy sand, 6 to 12 percent slopes	2.3	0.3%	IIle		70		24		32
29	Palms muck	2.1	0.3%	Vw						
4B	Oshtemo sandy loam, 2 to 6 percent slopes	1.1	0.1%	IIIs	IIle	100	175	30	57	45
W	Water	0.5	0.1%							
34	Pits	0.3	0.0%							
Weighted Average						110.3	156.1	29.9	48.1	46.8