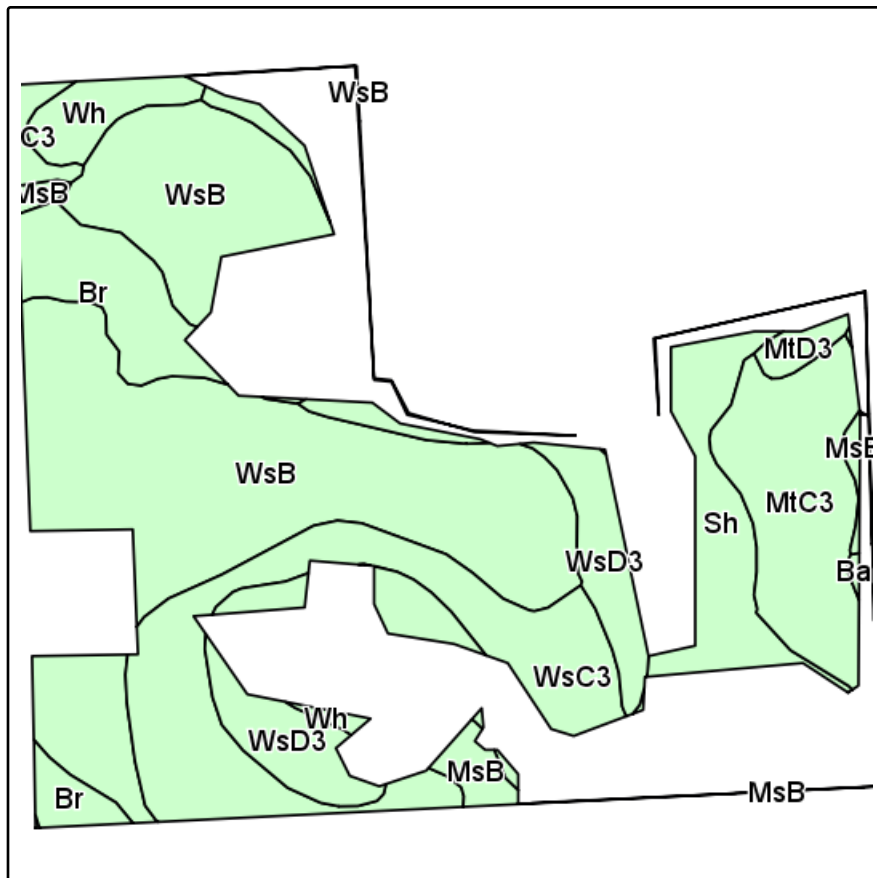
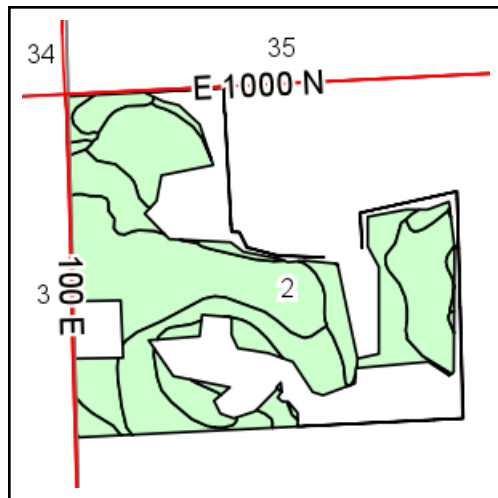


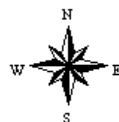
# Soils Map



Field borders provided by Farm Service Agency as of 5/21/2008.  
Soils data provided by USDA and NRCS.



State: **Indiana**  
County: **Miami**  
Location: **2-28N-4E**  
Township: **Richland**  
Acres: **48.64**  
Date: **10/31/2013**



Maps provided by:



©AgriData, Inc 2013  
www.AgriDataInc.com

Code	Soil Description	Acres	Percent of field	Non-Irr Class	Corn	Soybeans	Winter wheat
WsB	Wawasee sandy loam, 2 to 6 percent slopes	20.47	42.1%	Ile	140	49	70
WsC3	Wawasee loam, 6 to 12 percent slopes, severely eroded	7.70	15.8%	IIIe	125	44	63
MtC3	Morley silty clay loam, 6 to 12 percent slopes, severely eroded	5.67	11.7%	IVe	105	37	47
WsD3	Wawasee loam, 12 to 18 percent slopes, severely eroded	5.26	10.8%	VIe	110	39	55
Sh	Shoals silt loam	3.35	6.9%	IIw	135	44	61
Br	Brookston loam	3.31	6.8%	IIw	173	49	70
Wh	Washtenaw silt loam	1.39	2.9%	IIw	165	49	66
MsB	Morley silt loam, 2 to 6 percent slopes	0.97	2.0%	Ile	130	46	59
MtD3	Morley silty clay loam, 12 to 25 percent slopes, severely eroded	0.46	0.9%	VIe	75	26	34
Ba	Blount loam, 1 to 3 percent slopes	0.06	0.1%	Ile	140	46	63
<b>Weighted Average</b>					<b>132.1</b>	<b>45.1</b>	<b>63.3</b>