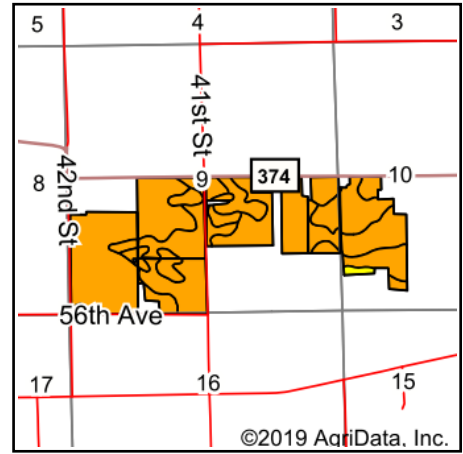


Soils Map



Soils data provided by USDA and NRCS.



State: **Michigan**
 County: **Van Buren**
 Location: **9-3S-14W**
 Township: **Paw Paw**
 Acres: **264.64**
 Date: **11/5/2019**



Maps Provided By:



© AgriData, Inc. 2019

www.AgriDataInc.com



Archived Soils Ending 2/5/2014

Code	Soil Description	Acres	Percent of field	Non-Irr Class Legend	Water Table	Restrictive Layer	Soil Drainage	Non-Irr Class *c	Irr Class *c	Cor n	Corn Irrigated	Soybeans	Soybeans Irrigated	Winter wheat
20B	Spinks loamy sand, 0 to 6 percent slopes	128.89	48.7%		0ft.	> 6.5ft.	Well drained	IIIs	IIIs	75	165	27	50	30
18B	Ormas loamy sand, 0 to 6 percent slopes	70.50	26.6%		> 6.5ft.	> 6.5ft.	Well drained	IIIe		80		28		36
6B	Oshtemo sandy loam, 0 to 6 percent slopes	52.14	19.7%		> 6.5ft.	> 6.5ft.	Well drained	IIIs	IIIe	95	175	30	57	45
18C	Ormas loamy sand, 6 to 12 percent slopes	7.53	2.8%		> 6.5ft.	> 6.5ft.	Well drained	IIIe		70		24		32
6C	Oshtemo sandy loam, 6 to 12 percent slopes	3.61	1.4%		> 6.5ft.	> 6.5ft.	Well drained	IIIe	IIIe	90	165	26	50	40
51	Kingsville loamy sand	1.97	0.7%		0ft.	> 6.5ft.	Poorly drained	IVw		75		25		30
Weighted Average										80.3	117.1	27.7	36.3	34.7

*c: Using Capabilities Class Dominant Condition Aggregation Method

Soils data provided by USDA and NRCS.