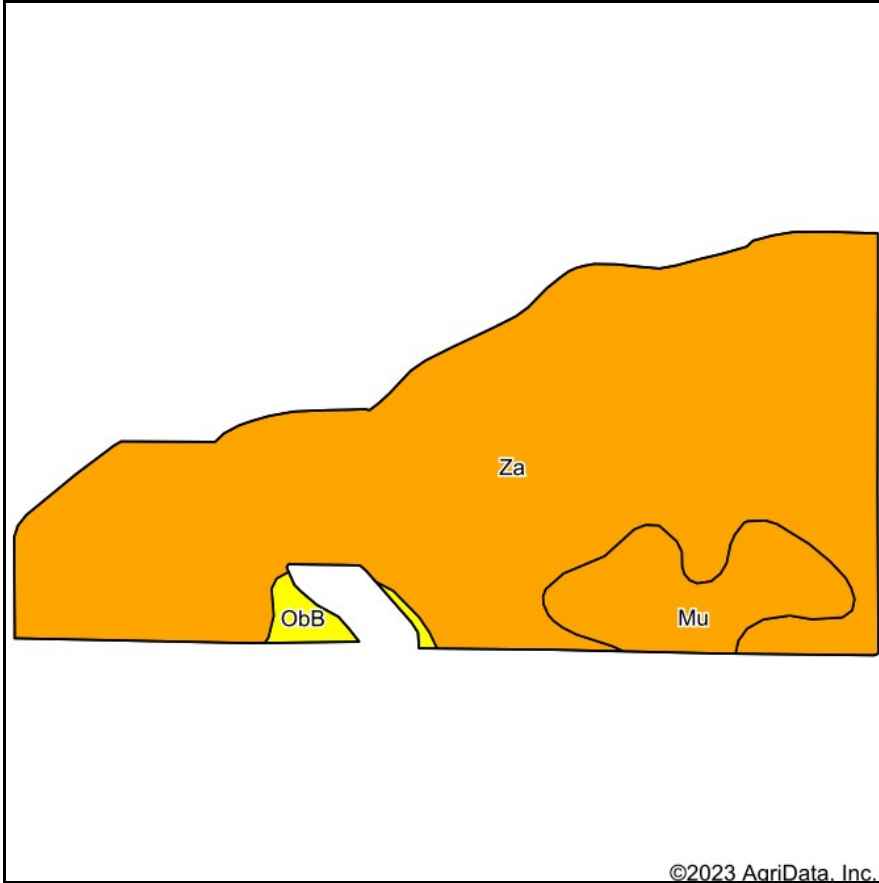
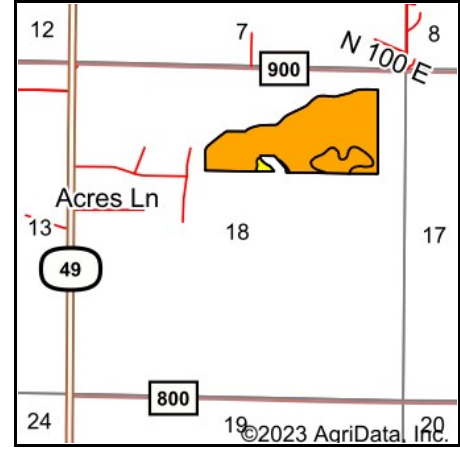


# Soils Map



Soils data provided by USDA and NRCS.



State: **Indiana**  
 County: **Jasper**  
 Location: **18-31N-5W**  
 Township: **Walker**  
 Acres: **57.84**  
 Date: **4/4/2023**



Maps Provided By:



Area Symbol: IN073, Soil Area Version: 23

Code	Soil Description	Acres	Percent of field	Non-Irr Class Legend	Water Table	Restrictive Layer	Soil Drainage	Non-Irr Class *c	Corn Bu	Soybeans Bu	Wheat Bu	Winter wheat Bu	*n NCCPI Corn	*n NCCPI Soybeans
Za	Zadog-Maumee loamy sands	50.83	87.9%		0.2ft.	> 6.5ft.	Poorly drained	Illw	146	36		58	42	38
Mu	Morocco loamy sand, 0 to 2 percent slopes	6.03	10.4%		1ft.	> 6.5ft.	Somewhat poorly drained	Ills	102	36	38	3	48	31
ObB	Oakville sand, moderately wet, 1 to 3 percent slopes	0.98	1.7%		3ft.	> 6.5ft.	Moderately well drained	IVs	81	29		37	26	26
<b>Weighted Average</b>								<b>3.02</b>	<b>140.3</b>	<b>35.9</b>	<b>4</b>	<b>51.9</b>	<b>*n 42.4</b>	<b>*n 37.1</b>

\*n: The aggregation method is "Weighted Average using all components"

\*c: Using Capabilities Class Dominant Condition Aggregation Method

Soils data provided by USDA and NRCS.