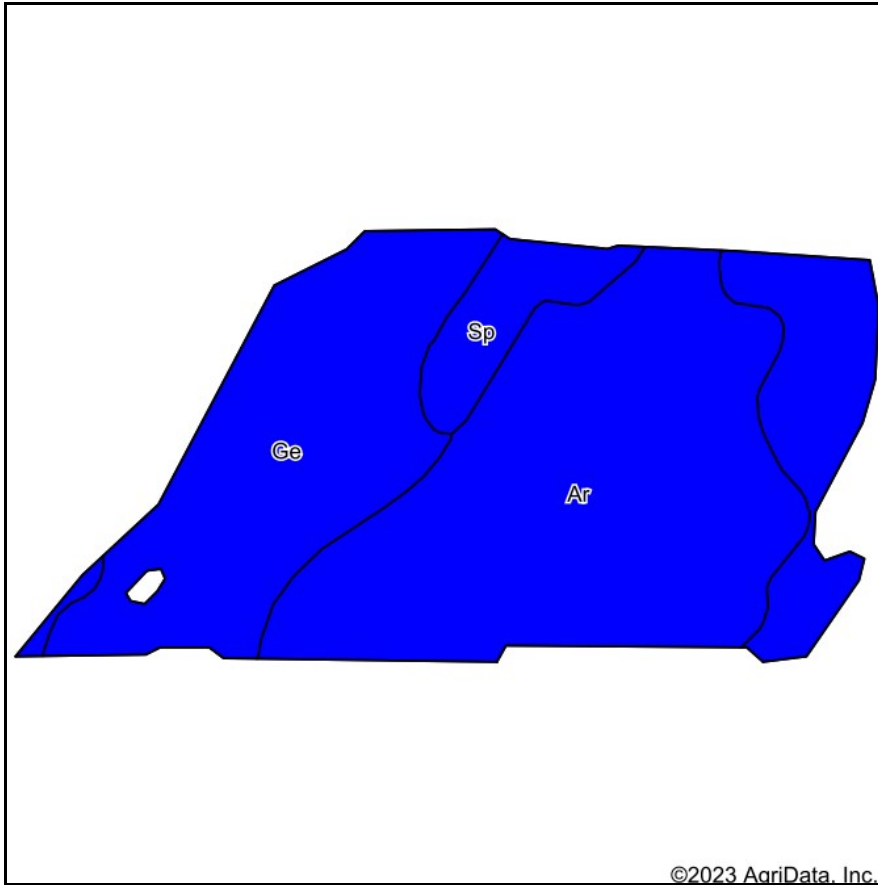
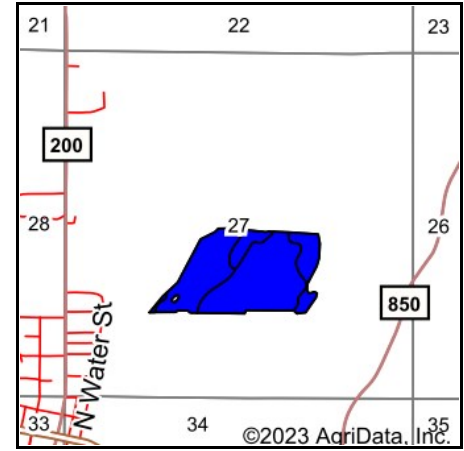


Soils Map



Soils data provided by USDA and NRCS.



State: **Indiana**
 County: **Vermillion**
 Location: **27-19N-9W**
 Township: **Highland**
 Acres: **57.44**
 Date: **3/24/2023**



Maps Provided By:



Area Symbol: IN165, Soil Area Version: 23

Code	Soil Description	Acres	Percent of field	Non-Irr Class Legend	Restrictive Layer	Soil Drainage	Non-Irr Class *c	Corn Bu	Soybeans Bu	*n NCCPI Corn	*n NCCPI Soybeans
Ar	Armiesburg silty clay loam	28.89	50.3%		> 6.5ft.	Well drained	Ilw	126	41	89	76
Ge	Genesee silt loam	24.95	43.4%		> 6.5ft.	Well drained	Ilw	116	41	77	79
Sp	Stonelick sandy loam	3.60	6.3%		> 6.5ft.	Well drained	Ilw	80	28	55	51
Weighted Average							2.00	118.8	40.2	*n 81.7	*n 75.7

*n: The aggregation method is "Weighted Average using all components"

*c: Using Capabilities Class Dominant Condition Aggregation Method