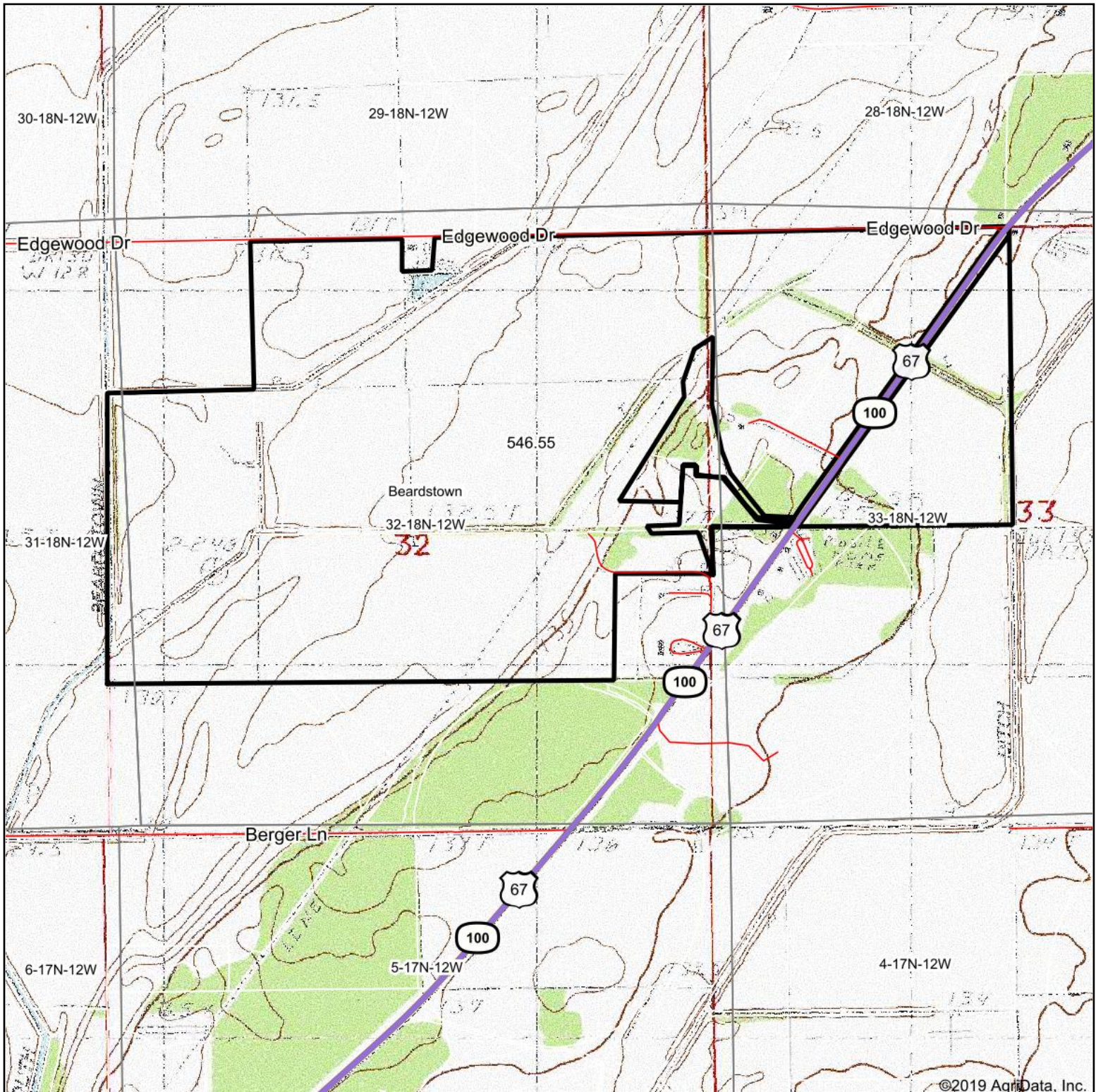


Topography Map



©2019 AgriData, Inc.



Maps Provided By:



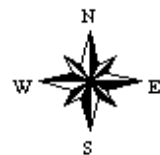
© AgriData, Inc. 2019

www.AgridataInc.com

map center: 39° 58' 12.99, -90° 28' 14.05

0ft 1368ft 2736ft

32-18N-12W
Cass County
Illinois



10/14/2019

Field borders provided by Farm Service Agency as of 5/21/2008. Soils data provided by University of Illinois at Champaign-Urbana.