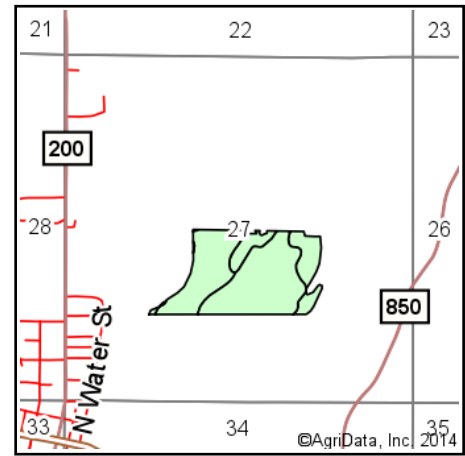
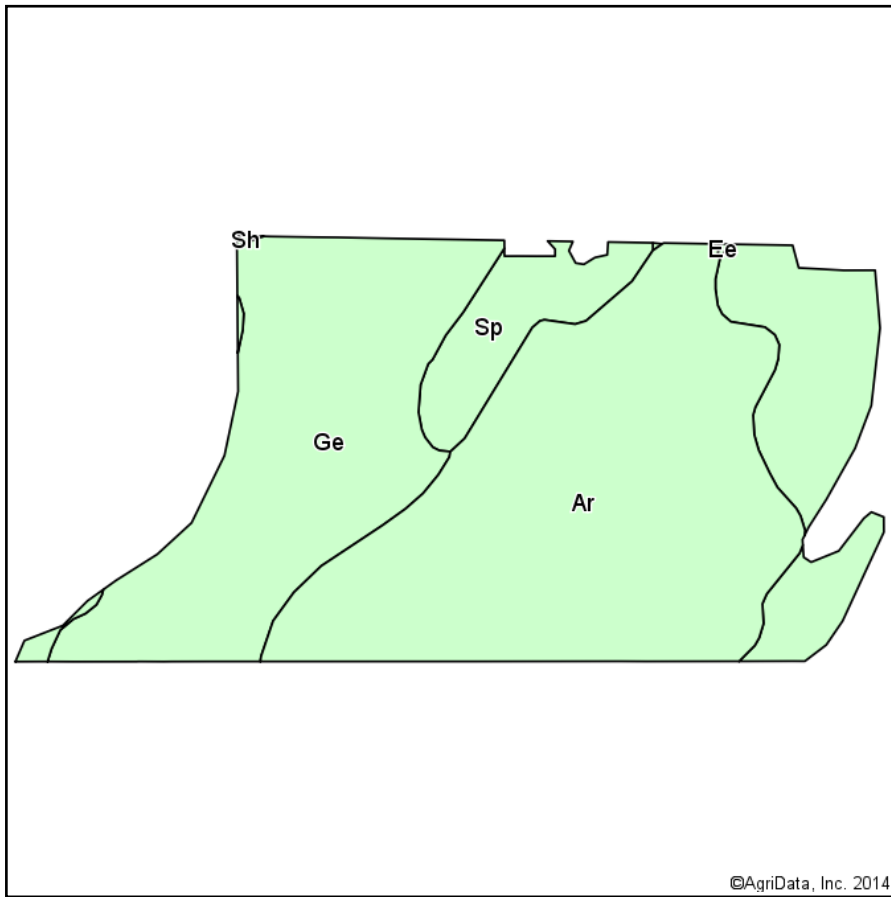
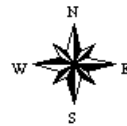


Soil Map



State: **Indiana**
 County: **Vermillion**
 Location: **27-19N-9W**
 Township: **Highland**
 Acres: **59.05**
 Date: **1/16/2015**



Maps Provided By:

 CUSTOMIZED ONLINE MAPPING
 © AgriData, Inc. 2014 www.AgriDataInc.com

Area Symbol: IN165, Soil Area Version: 15

Code	Soil Description	Acres	Percent of field	Water Table	Restrictive Layer	Soil Drainage	Non-Irr Class	Soybeans	Corn
Ar	Armiesburg silty clay loam	28.49	48.2%	> 6.5ft.	> 6.5ft.	Well drained	Ilw	41	126
Ge	Genesee silt loam	26.57	45.0%	> 6.5ft.	> 6.5ft.	Well drained	Ilw	41	116
Sp	Stonelick sandy loam	3.99	6.8%	> 6.5ft.	> 6.5ft.	Well drained	Ilw	28	80
Weighted Average								40.1	118.4

Area Symbol: IN165, Soil Area Version: 15

Field borders provided by Farm Service Agency as of 5/21/2008. Aerial photography provided by Aerial Photography Field Office.