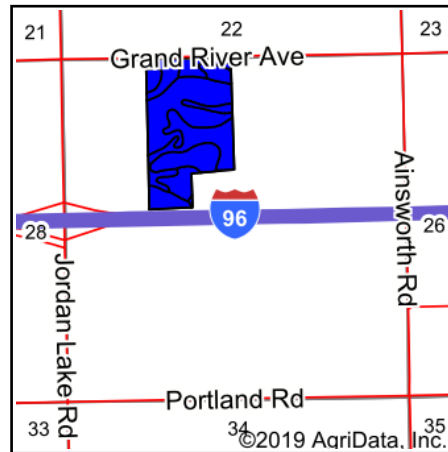
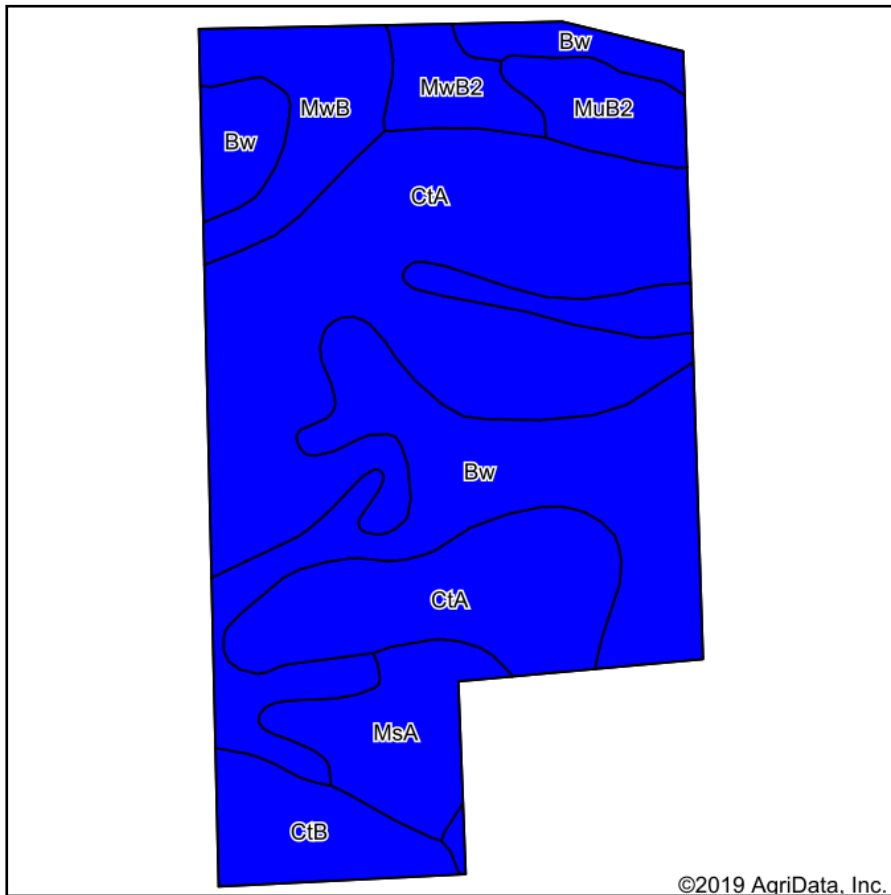


# Soils Map



State: **Michigan**  
 County: **Ionia**  
 Location: **27-6N-7W**  
 Township: **Berlin**  
 Acres: **61.4**  
 Date: **12/27/2019**



Soils data provided by USDA and NRCS.

Archived Soils Ending 1/21/2012											
Code	Soil Description	Acres	Percent of field	Non-Irr Class Legend	Water Table	Restrictive Layer	Soil Drainage	Non-Irr Class *c	Corn	Soybeans	Winter wheat
CtA	Conover loam, 0 to 2 percent slopes	27.96	45.5%		1.5ft.	> 6.5ft.	Somewhat poorly drained	IIw	130	40	65
Bw	Brookston loam	15.84	25.8%		0ft.	> 6.5ft.	Very poorly drained	IIw	145	51	65
MwB	Miami-Owosso sandy loams, 2 to 6 percent slopes	4.11	6.7%		> 6.5ft.	> 6.5ft.	Well drained	Ile	110	38	50
MsA	Metamora sandy loam, 0 to 2 percent slopes	4.10	6.7%		1.5ft.	> 6.5ft.	Somewhat poorly drained	IIw	125	40	60
MuB2	Miami loam, 2 to 6 percent slopes, moderately eroded	3.85	6.3%		> 6.5ft.	> 6.5ft.	Well drained	Ile	105	37	47
CtB	Conover loam, 2 to 6 percent slopes	3.52	5.7%		1.5ft.	> 6.5ft.	Somewhat poorly drained	Ile	120	36	60
MwB2	Miami-Owosso sandy loams, 2 to 6 percent slopes, moderately eroded	2.02	3.3%		> 6.5ft.	> 6.5ft.	Well drained	Ile	105	37	47
<b>Weighted Average</b>									<b>129.2</b>	<b>42.2</b>	<b>61.7</b>

\*c: Using Capabilities Class Dominant Condition Aggregation Method  
 Soils data provided by USDA and NRCS.