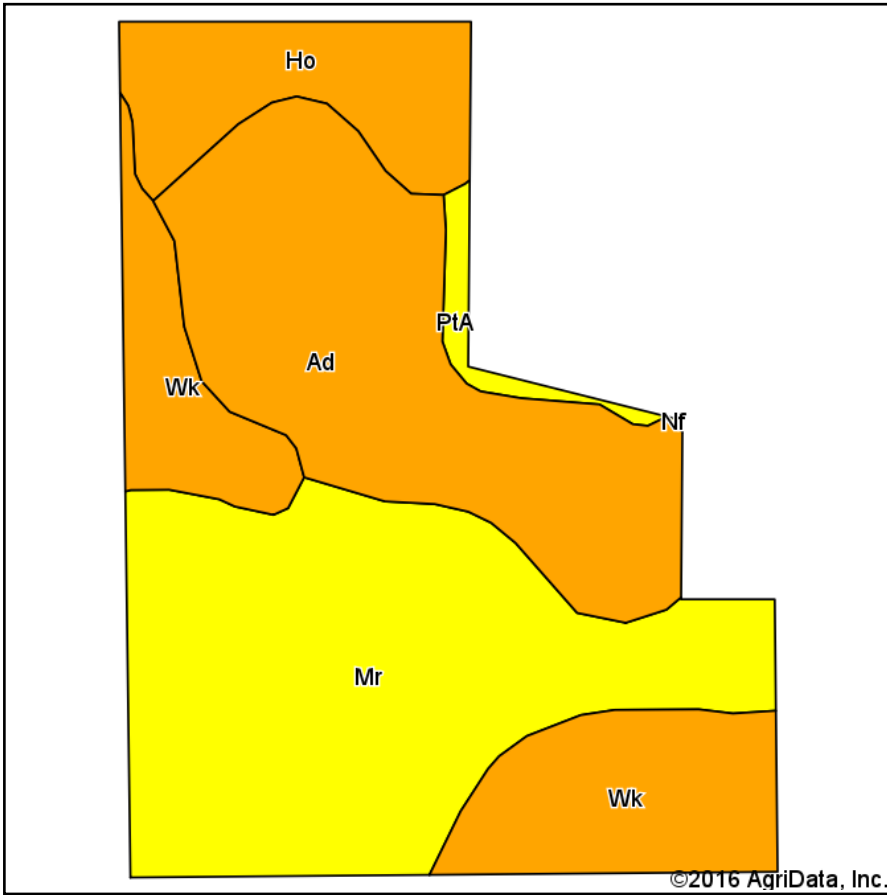
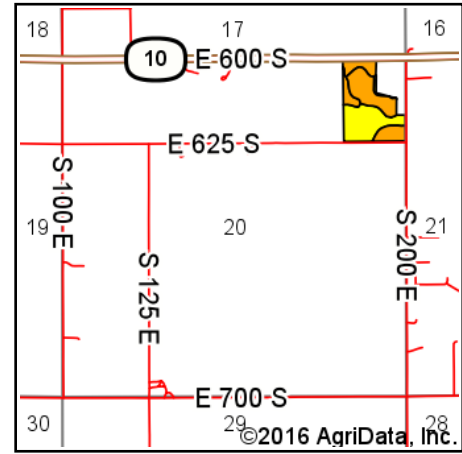


Soils Map



Soils data provided by USDA and NRCS.



State: **Indiana**
 County: **Starke**
 Location: **20-32N-2W**
 Township: **California**
 Acres: **20.96**
 Date: **8/19/2016**



Area Symbol: IN149, Soil Area Version: 17

Code	Soil Description	Acres	Percent of field	Non-Irr Class Legend	Water Table	Restrictive Layer	Soil Drainage	Non-Irr Class *c	Corn	Soybeans	Winter wheat
Mr	Morocco loamy sand	8.36	39.9%		1.2ft.	> 6.5ft.	Somewhat poorly drained	IVs	97	27	44
Ad	Adrian muck, drained	6.23	29.7%		0ft.	> 6.5ft.	Very poorly drained	IIIw	145	38	58
Wk	Watsoka loamy sand	3.80	18.1%		1.2ft.	> 6.5ft.	Somewhat poorly drained	IIIs	111	29	50
Ho	Houghton muck, drained	2.21	10.5%		0ft.	> 6.5ft.	Very poorly drained	IIIw	150	40	60
PtA	Plainfield sand, wet substratum, 0 to 3 percent slopes	0.36	1.7%		3.3ft.	> 6.5ft.	Moderately well drained	IVs	90	32	41
Weighted Average									119.3	32.1	50.9

Area Symbol: IN149, Soil Area Version: 17

*c: Using Capabilities Class Dominant Condition Aggregation Method

Soils data provided by USDA and NRCS.