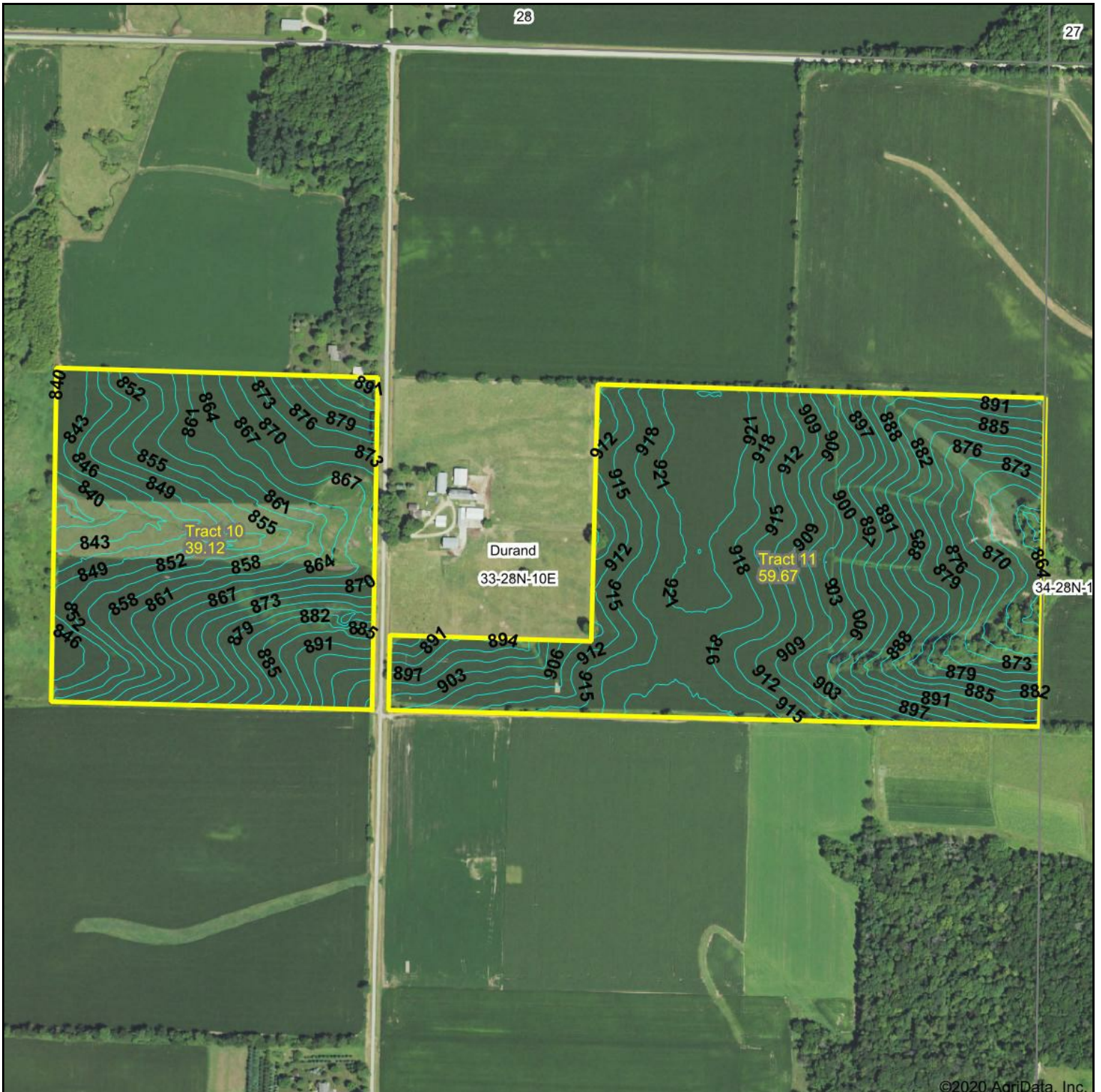
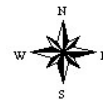


Topography Contours



Source: USGS 3 meter dem
Interval(ft): 3.0
Min: 833.8
Max: 924.4
Range: 90.6
Average: 886.2
Standard Deviation: 25.07 ft

0ft 623ft 1245ft



11/11/2020

33-28N-10E
Winnebago County
Illinois

Map Center: 42° 23' 0.32, -89° 20' 47.19