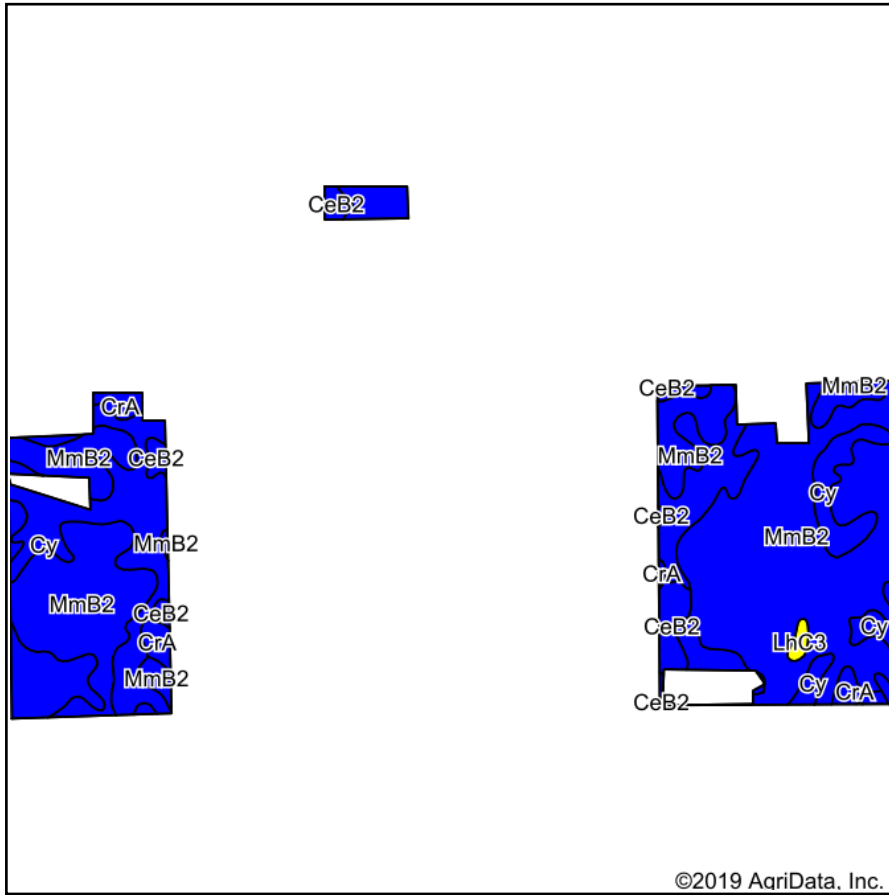
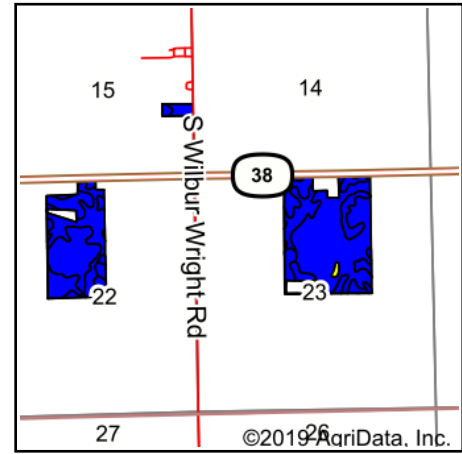


Soils Map



Soils data provided by USDA and NRCS.



State: **Indiana**
 County: **Henry**
 Location: **23-17N-11E**
 Township: **Liberty**
 Acres: **183.76**
 Date: **3/28/2019**



Maps Provided By:



© Agridata, Inc. 2019

www.AgridataInc.com



Area Symbol: IN065, Soil Area Version: 20

Code	Soil Description	Acres	Percent of field	Non-Irr Class Legend	Water Table	Restrictive Layer	Soil Drainage	Non-Irr Class *c	Corn	Soybeans	Winter wheat	Wheat	*n NCCPI Soybeans
MmB2	Miamian silt loam, New Castle Till Plain, 2 to 6 percent slopes, eroded	109.67	59.7%		2.5ft.	2.7ft. (Densic material)	Well drained	Ile	127	45	57		30
Cy	Cyclone silty clay loam, 0 to 2 percent slopes	61.77	33.6%		0.2ft.	> 6.5ft.	Poorly drained	Ilw	185	65	75		79
CeB2	Celina silt loam, 2 to 6 percent slopes, eroded	6.51	3.5%		1.5ft.	3.1ft. (Densic material)	Moderately well drained	Ile	125	40	52	43	35
CrA	Crosby silt loam, 0 to 2 percent slopes	4.94	2.7%		0.5ft.	3ft. (Densic material)	Somewhat poorly drained	Ilw	138	46	62		48
LhC3	Losantville clay loam, 6 to 12 percent slopes, severely eroded	0.87	0.5%		1.5ft.	1.3ft. (Densic material)	Moderately well drained	IVe	111	38	49		13
Weighted Average									146.6	51.5	63	1.5	*n 47.1

*n: The aggregation method is "Weighted Average using major components"

*c: Using Capabilities Class Dominant Condition Aggregation Method

Soils data provided by USDA and NRCS.