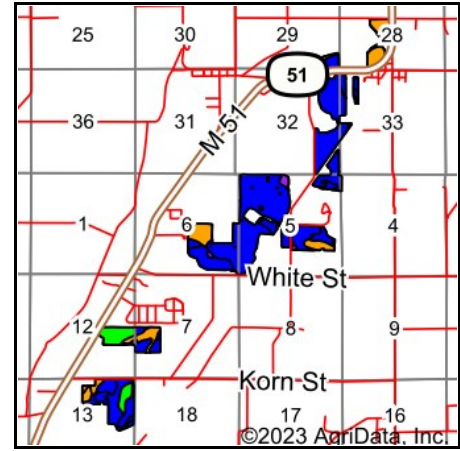
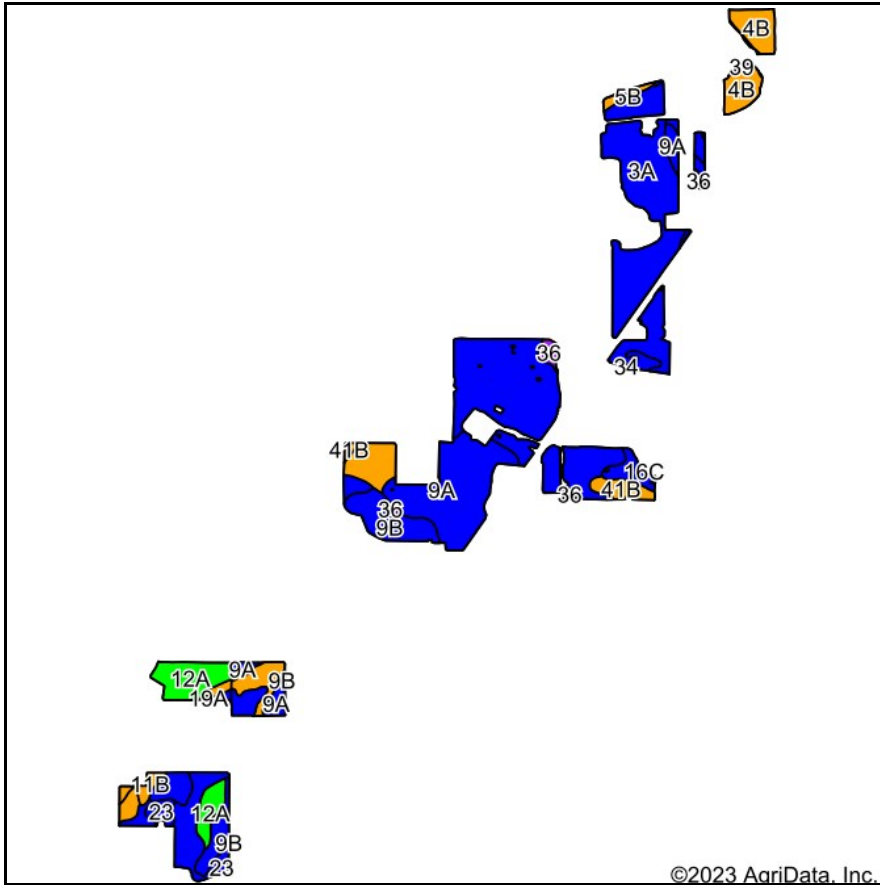


Soils Map



State: **Michigan**
 County: **Cass**
 Location: **6-7S-16W**
 Township: **Howard**
 Acres: **756.88**
 Date: **3/30/2023**



Maps Provided By:



Soils data provided by USDA and NRCS.

©2023 AgriData, Inc.

© AgriData, Inc. 2023

www.AgriDataInc.com

Archived Soils Ending 1/21/2012

| Code | Soil Description | Acres | Percent of field | Non-Irr Class Legend | Water Table | Restrictive Layer | Soil Drainage | Non-Irr Class *c | Irr Class *c | Corn Bu | Corn Irrigated Bu | Soybeans Bu | Soybeans Irrigated Bu | Winter wheat Bu |
|------|---|--------|------------------|----------------------|-------------|-------------------|-------------------------|------------------|--------------|---------|-------------------|-------------|-----------------------|-----------------|
| 3A | Schoolcraft loam, 0 to 2 percent slopes | 319.27 | 42.2% | | > 6.5ft. | > 6.5ft. | Well drained | lls | lls | 135 | 180 | 35 | 55 | 60 |
| 9A | Kalamazoo loam, 0 to 2 percent slopes | 121.28 | 16.0% | | > 6.5ft. | > 6.5ft. | Well drained | lls | lls | 110 | 175 | 30 | 55 | 40 |
| 9B | Kalamazoo loam, 2 to 6 percent slopes | 56.46 | 7.5% | | > 6.5ft. | > 6.5ft. | Well drained | lle | lle | 100 | 175 | 30 | 55 | 40 |
| 4B | Oshtemo sandy loam, 2 to 6 percent slopes | 53.72 | 7.1% | | > 6.5ft. | > 6.5ft. | Well drained | llls | llle | 100 | 175 | 30 | 57 | 45 |
| 12A | Ockley loam, 0 to 2 percent slopes | 44.69 | 5.9% | | > 6.5ft. | > 6.5ft. | Well drained | lw | | 110 | | 38 | | 44 |
| 22A | Monitor loam, 0 to 3 percent slopes | 40.32 | 5.3% | | 0.5ft. | > 6.5ft. | Somewhat poorly drained | llw | | 125 | | 44 | | 50 |

Soils data provided by USDA and NRCS.

| Code | Soil Description | Acres | Percent of field | Non-Irr Class Legend | Water Table | Restrictive Layer | Soil Drainage | Non-Irr Class *c | Irr Class *c | Corn Bu | Corn Irrigated Bu | Soybeans Bu | Soybeans Irrigated Bu | Winter wheat Bu |
|---|---|-------|------------------|----------------------|-------------|-------------------|-------------------------|------------------|--------------|--------------|-------------------|-------------|-----------------------|-----------------|
| 16B | Ormas loamy sand, 0 to 6 percent slopes | 24.31 | 3.2% | | > 6.5ft. | > 6.5ft. | Well drained | lle | | 80 | | 28 | | 36 |
| 12B | Ockley loam, 2 to 6 percent slopes | 15.95 | 2.1% | | > 6.5ft. | > 6.5ft. | Well drained | lle | | 110 | | 38 | | 44 |
| 41B | Spinks-Oshtemo complex, 2 to 6 percent slopes | 15.00 | 2.0% | | > 6.5ft. | > 6.5ft. | Well drained | lls | lls | 75 | 165 | 27 | 50 | 30 |
| 19A | Brady sandy loam, 0 to 2 percent slopes | 13.84 | 1.8% | | 0.5ft. | > 6.5ft. | Somewhat poorly drained | llw | | 115 | | 33 | | 50 |
| 36 | Gilford sandy loam | 10.01 | 1.3% | | 0ft. | > 6.5ft. | Very poorly drained | V w | | | | | | |
| 12A | Brady sandy loam, 0 to 2 percent slopes | 9.30 | 1.2% | | 0.5ft. | > 6.5ft. | Somewhat poorly drained | llw | | 115 | | 33 | | 50 |
| 23 | Sebewa loam | 9.03 | 1.2% | | 0ft. | > 6.5ft. | Poorly drained | llw | | 115 | | 36 | | 55 |
| 11B | Oshtemo sandy loam, 0 to 6 percent slopes | 8.88 | 1.2% | | > 6.5ft. | > 6.5ft. | Well drained | lls | lle | 95 | 175 | 30 | 57 | 45 |
| 82B | Oshtemo-Ockley complex, 0 to 4 percent slopes | 6.28 | 0.8% | | > 6.5ft. | > 6.5ft. | Well drained | lls | lle | 95 | 175 | 30 | 57 | 45 |
| 5B | Spinks loamy sand, 0 to 6 percent slopes | 4.43 | 0.6% | | > 6.5ft. | > 6.5ft. | Well drained | lls | lls | 75 | 165 | 27 | 50 | 30 |
| 13B | Spinks loamy fine sand, 0 to 6 percent slopes | 1.79 | 0.2% | | > 6.5ft. | > 6.5ft. | Well drained | lls | lls | 75 | 165 | 27 | 50 | 30 |
| 39 | Cohoctah loam | 1.11 | 0.1% | | 0ft. | > 6.5ft. | Very poorly drained | V w | | | | | | |
| 4C | Oshtemo sandy loam, 6 to 12 percent slopes | 0.78 | 0.1% | | > 6.5ft. | > 6.5ft. | Well drained | lle | lle | 90 | 165 | 26 | 50 | 40 |
| 34 | Pits | 0.34 | 0.0% | | > 6.5ft. | > 6.5ft. | | | | | | | | |
| 24 | Adrian muck | 0.09 | 0.0% | | 0ft. | > 6.5ft. | Very poorly drained | V w | | | | | | |
| *c: Using Capabilities Class Dominant Condition Aggregation Method | | | | | | | | | | | | | | |
| *- Non Irr Class weighted average cannot be calculated on the current soils data due to missing data. | | | | | | | | | | | | | | |
| Weighted Average | | | | | | | | | | | | | | |
| | | | | | | | | | | 137.7 | 33 | 42.8 | 49.2 | |

*- Irr Class weighted average cannot be calculated on the current soils data due to missing data.