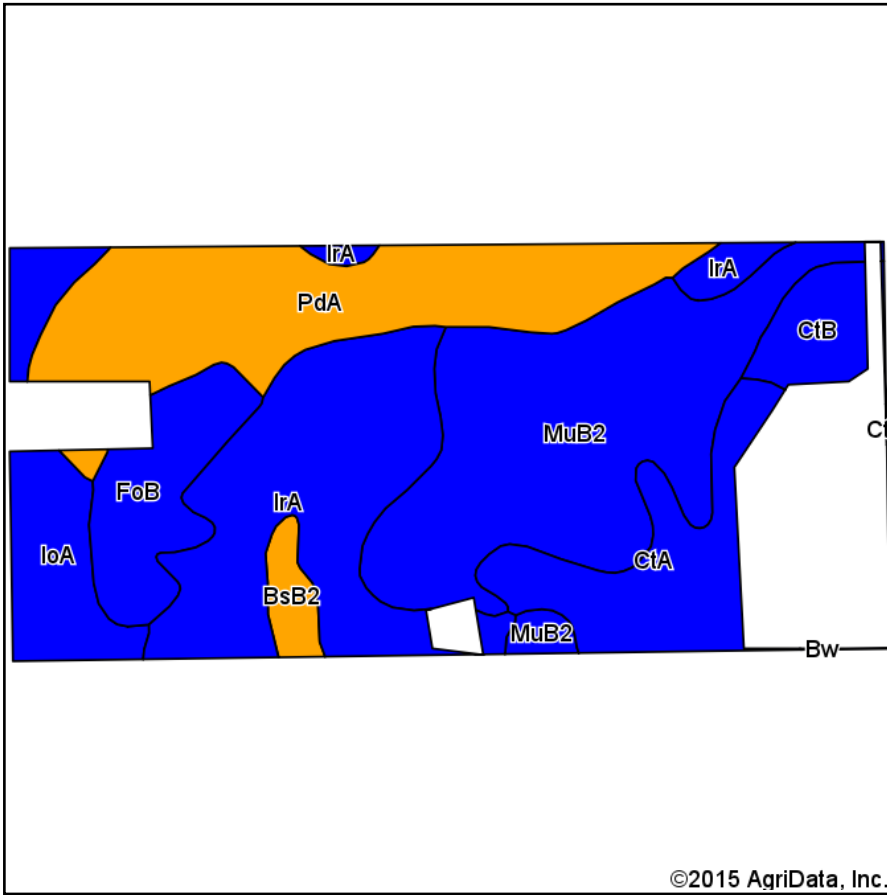
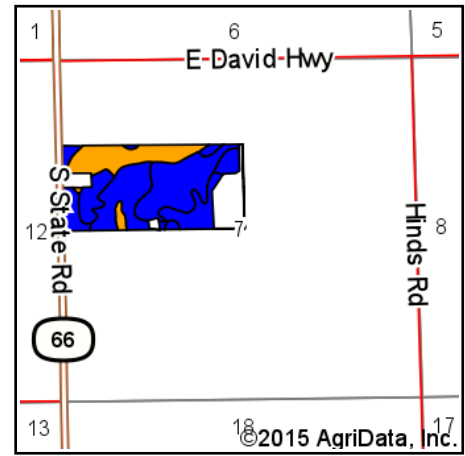


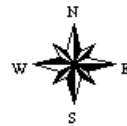
Soil Map



Soils data provided by USDA and NRCS.



State: **Michigan**
 County: **Ionia**
 Location: **7-6N-6W**
 Township: **Orange**
 Acres: **72.66**
 Date: **2/24/2015**



Maps Provided By:
surety
 CUSTOMIZED ONLINE MAPPING
 © AgriData, Inc. 2014 www.AgriDataInc.com

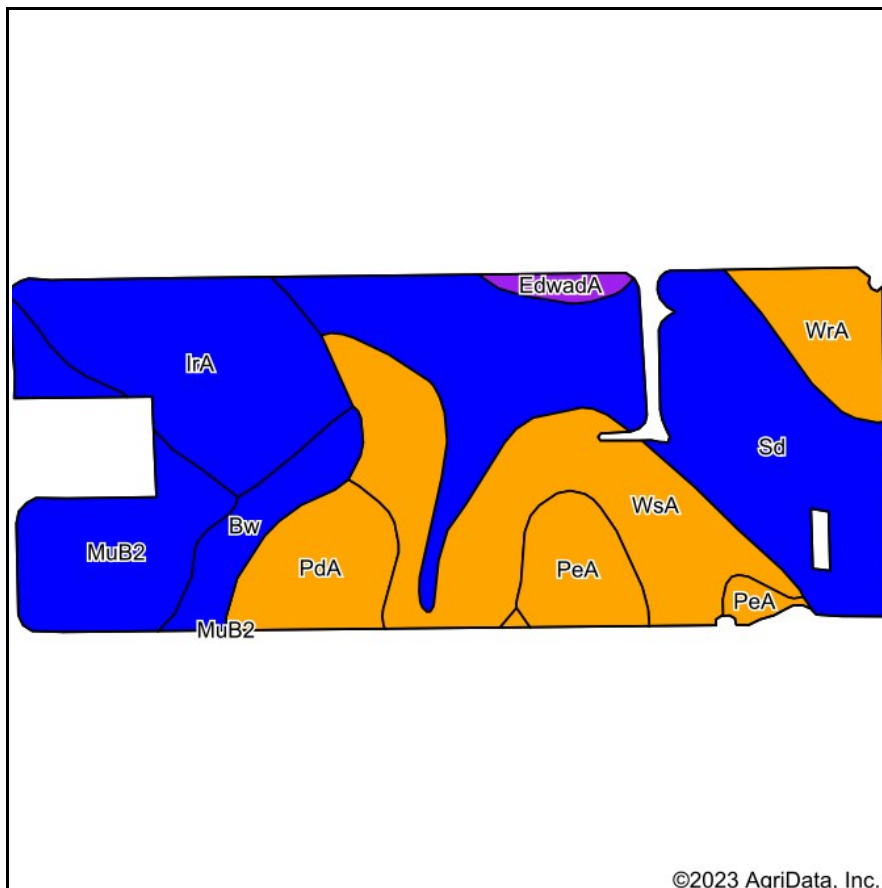
Area Symbol: MI067, Soil Area Version: 10

Code	Soil Description	Acres	Percent of field	Non-Irr Class Legend	Water Table	Non-Irr Class	Irr Class	Alfalfa hay	Corn	Corn silage	Oats	Soybeans	Winter wheat	
MuB2	Miami loam, 2 to 6 percent slopes, moderately eroded	19.95	27.5%		> 6.5ft.	Ile			105			37	47	
IrA	Ionia sandy loam, 0 to 2 percent slopes	15.42	21.2%		2.5ft.	Ils			105	18	85	30	48	
PdA	Perrin loamy sand, 0 to 2 percent slopes	14.69	20.2%		2.7ft.	IIIs		3.5	80	14	60	28	35	
CtA	Conover loam, 0 to 2 percent slopes	7.16	9.9%		1.5ft.	IIw		5	130	19	105	40	65	
IoA	Ionia loam, 0 to 2 percent slopes	5.91	8.1%		2.5ft.	Ils			105	18	85	30	48	
FoB	Fox sandy loam, 2 to 6 percent slopes	5.45	7.5%		> 6.5ft.	Ile			105	17	70	35	42	
CtB	Conover loam, 2 to 6 percent slopes	2.77	3.8%		1.5ft.	Ile		5	120	18	100	36	60	
BsB2	Boyer and Spinks loamy sands, 2 to 6 percent slopes, moderately eroded	1.31	1.8%		> 6.5ft.	IIIs	IIIs	3.4	66	12	47	26	27	
Weighted Average									1.5	102.3	12.2	57.3	33	46.4

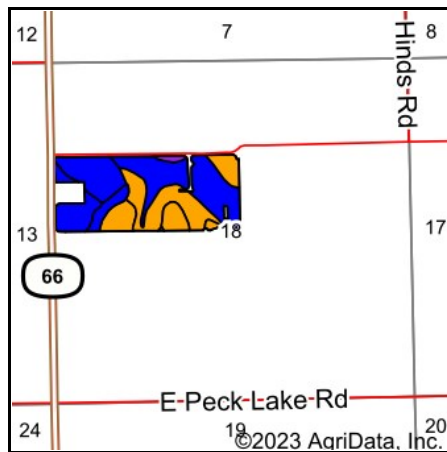
Area Symbol: MI067, Soil Area Version: 10

Soils data provided by USDA and NRCS.

Soils Map



Soils data provided by USDA and NRCS.



State: **Michigan**
 County: **Ionia**
 Location: **18-6N-6W**
 Township: **Orange**
 Acres: **71.27**
 Date: **8/14/2023**



Maps Provided By:



Area Symbol: MI067, Soil Area Version: 19

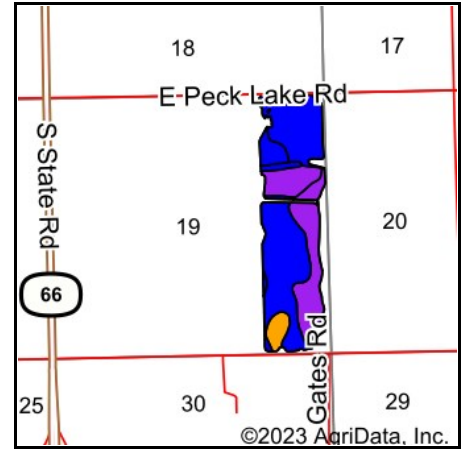
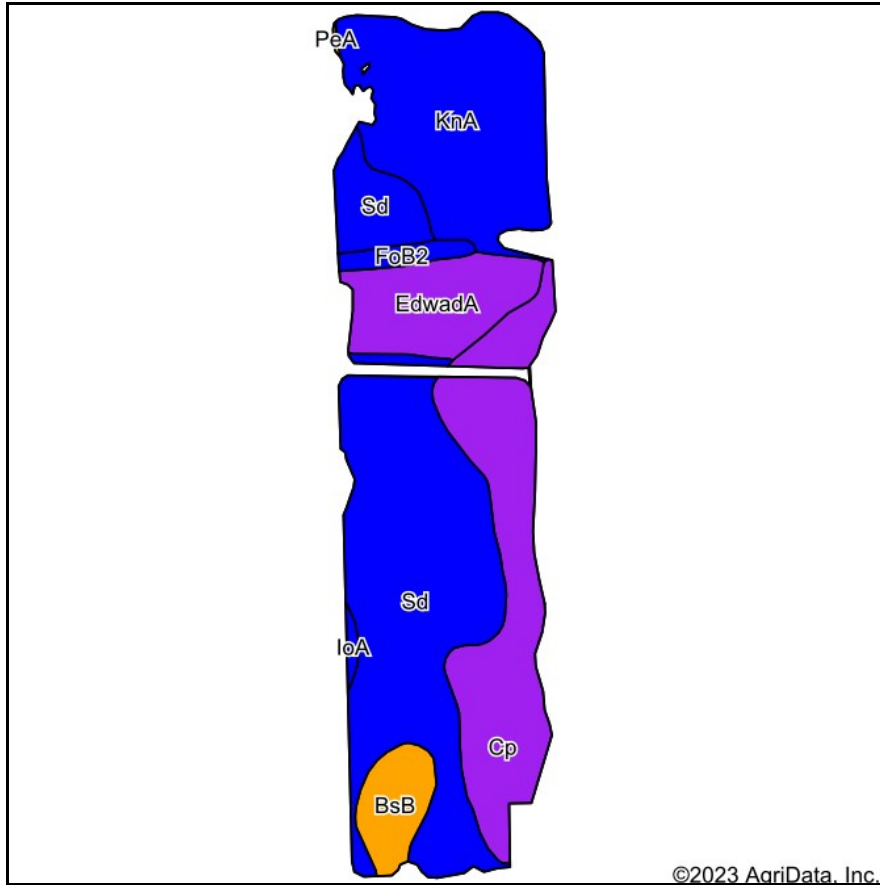
Code	Soil Description	Acres	Percent of field	Non-Irr Class Legend	Non-Irr Class *c	Corn Bu	Corn silage Tons	Soybeans Bu	*n NCCPI Corn	*n NCCPI Soybeans
Sd	Sebewa loam, 0 to 2 percent slopes	22.68	31.8%		IIw				71	75
WsA	Wasepi-Brady sandy loams, 0 to 2 percent slopes	13.79	19.3%		III s	85	14	32	50	35
IrA	Ionia sandy loam, 0 to 2 percent slopes	10.87	15.3%		II s	105	18	30	61	46
MuB2	Wawasee loam, 2 to 6 percent slopes, moderately eroded	7.68	10.8%		Ile				53	52
PdA	Perrin loamy sand, 0 to 2 percent slopes	4.68	6.6%		III s	80	14	28	46	30
PeA	Perrin sandy loam, 0 to 2 percent slopes	3.95	5.5%		III s	80	14	28	48	32
WrA	Wasepi-Brady loamy sands, 0 to 2 percent slopes	3.64	5.1%		III s	85	14	32	50	34
Bw	Parkhill loam, non dense till subsoil, 0 to 2 percent slopes	3.17	4.4%		IIw				64	67
EdwadA	Edwards muck, 0 to 1 percent slopes	0.81	1.1%		V w				5	3
Weighted Average					2.40	46.5	7.9	15.8	*n 58.4	*n 51.8

*n: The aggregation method is "Weighted Average using all components"

*c: Using Capabilities Class Dominant Condition Aggregation Method

Soils data provided by USDA and NRCS.

Soils Map



State: **Michigan**
 County: **Ionia**
 Location: **19-6N-6W**
 Township: **Orange**
 Acres: **133.22**
 Date: **8/15/2023**



Maps Provided By:



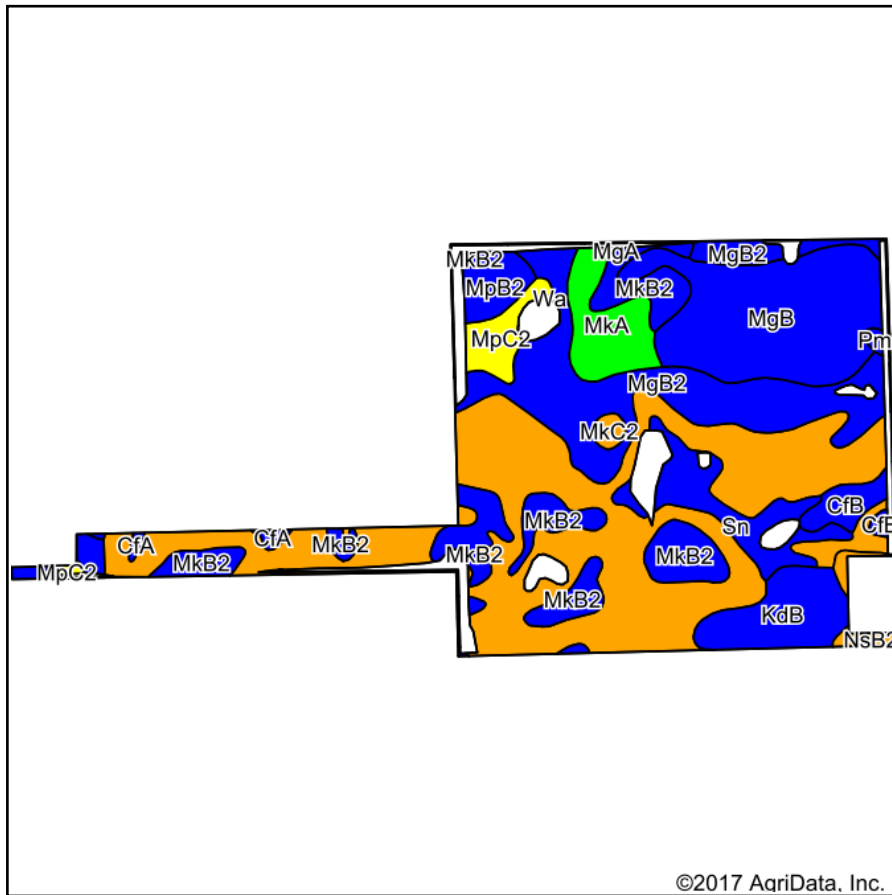
Area Symbol: MI067, Soil Area Version: 19

Code	Soil Description	Acres	Percent of field	Non-Irr Class Legend	Non-Irr Class *c	Corn Bu	Corn silage Tons	Soybeans Bu	*n NCCPI Corn	*n NCCPI Soybeans
Sd	Sebewa loam, 0 to 2 percent slopes	52.08	39.1%		IIw				71	75
KnA	Kibbie loam, 0 to 2 percent slopes	30.78	23.1%		IIw	130	20	40	71	68
Cp	Cohoctah-Sloan loams	28.74	21.6%		V w				40	43
EdwadA	Edwards muck, 0 to 1 percent slopes	12.76	9.6%		V w				5	3
BsB	Boyer and Spinks loamy sands, 2 to 6 percent slopes	6.05	4.5%		IIIs	80	14	30	47	30
FoB2	Fox sandy loam, 2 to 6 percent slopes, moderately eroded	2.13	1.6%		Ile	100	16	33	52	42
IoA	Ionia loam, 0 to 2 percent slopes	0.60	0.5%		IIIs	105	18	30	64	50
PeA	Perrin sandy loam, 0 to 2 percent slopes	0.08	0.1%		IIIs	80	14	28	48	32
Weighted Average					2.98	35.8	5.6	11.3	*n 56.6	*n 56.9

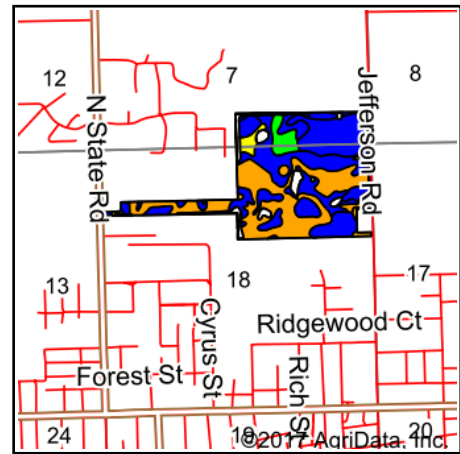
*n: The aggregation method is "Weighted Average using all components"

*c: Using Capabilities Class Dominant Condition Aggregation Method

Soils Map



Soils data provided by USDA and NRCS.



State: **Michigan**
 County: **Ionia**
 Location: **18-7N-6W**
 Township: **Ionia**
 Acres: **156.3**
 Date: **10/26/2017**



Maps Provided By:



© AgriData, Inc. 2017

www.AgriDataInc.com



Archived Soils Ending 11/6/2014

Area Symbol: MI067, Soil Area Version: 9

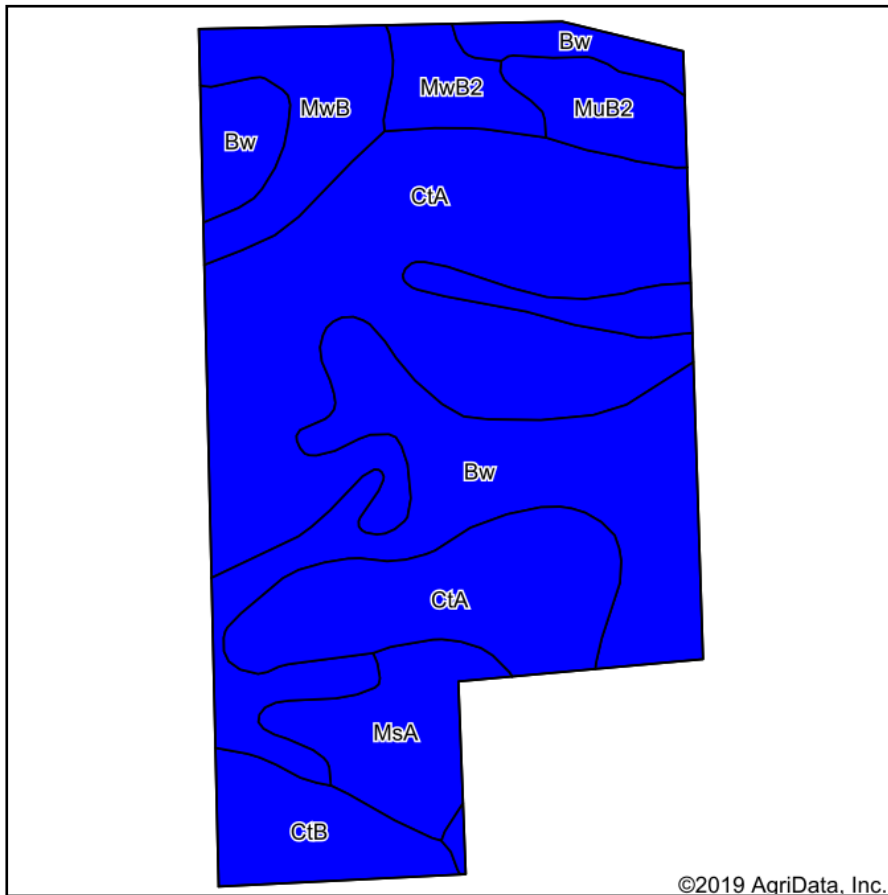
Code	Soil Description	Acres	Percent of field	Non-Irr Class Legend	Water Table	Soil Drainage	Non-Irr Class *c	Alfalfa hay	Alfalfa hay Irrigated	Corn	Corn Irrigated	Corn silage	Corn silage Irrigated	Oats	Soybeans	Winter wheat	Winter wheat Irrigated
MkC2	Marlette sandy loam, 6 to 12 percent slopes, moderately eroded	57.76	37.0%		> 6.5ft.	Well drained	Ille	3.6		90	145	14	20	75		45	
MgB2	Marlette loam, 2 to 6 percent slopes, moderately eroded	23.83	15.2%		> 6.5ft.		Ile	4.8		120	150	19	27	95		60	
MgB	Marlette loam, 2 to 6 percent slopes	22.52	14.4%		> 6.5ft.	Moderately well drained	Ile	4.8		120	150	19	27	95		60	
MkB2	Marlette sandy loam, 2 to 6 percent slopes, moderately eroded	18.55	11.9%		> 6.5ft.	Well drained	Ile	4.8		120	150	19	27	95		60	
KdB	Kawkawlin sandy loam, 2 to 6 percent slopes	7.63	4.9%		1.5ft.	Somewhat poorly drained	Ile	4	5.8	105	140	16	23	85	38	46	
Sn	Sims loam	7.20	4.6%		0ft.	Poorly drained	Ilw	5.8		125		19		100	42	60	

MkA	Marlette sandy loam, 0 to 2 percent slopes	6.60	4.2%		4.2ft.	Well drained	lw	5		125	160	20	27	100		62	
MpC2	McBride sandy loam, 6 to 12 percent slopes, moderately eroded	3.60	2.3%		> 6.5ft.	Well drained	IVe	3.4		85		14		70	20	34	
MpB2	McBride sandy loam, 2 to 6 percent slopes, moderately eroded	3.53	2.3%		> 6.5ft.	Well drained	Ile	3.8	7	95	155	16	26	80	28	40	60
CfB	Capac sandy loam, 2 to 6 percent slopes	2.77	1.8%		1.5ft.	Somewhat poorly drained	Ile	5.5	6.8	110	155	17	26	95	36	62	
NsB2	Nester sandy loam, 2 to 6 percent slopes, moderately eroded	1.25	0.8%		> 6.5ft.	Well drained	IIle	4.8		100		17		80	30	50	
CfA	Capac sandy loam, 0 to 2 percent slopes	0.63	0.4%		1.5ft.	Somewhat poorly drained	Ilw	5.5	7	120	155	18	26	100	40	65	
Pm	Pewamo clay loam	0.34	0.2%		0ft.	Poorly drained	Ilw	6		130		20		100	42	60	
MgA	Marlette loam, 0 to 2 percent slopes	0.09	0.1%		4.2ft.	Well drained	lw	5		125	160	20	27	100		62	
Weighted Average								4.3	0.6	106.9	136.4	16.8	22	86.6	6	52.8	1.4

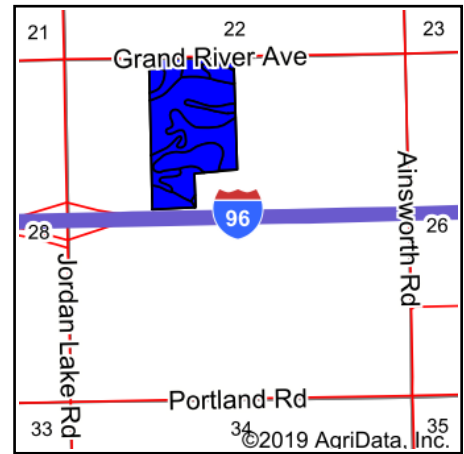
*c: Using Capabilities Class Dominant Condition Aggregation Method

Soils data provided by USDA and NRCS.

Soils Map



Soils data provided by USDA and NRCS.



State: **Michigan**
 County: **Ionia**
 Location: **27-6N-7W**
 Township: **Berlin**
 Acres: **61.4**
 Date: **12/27/2019**



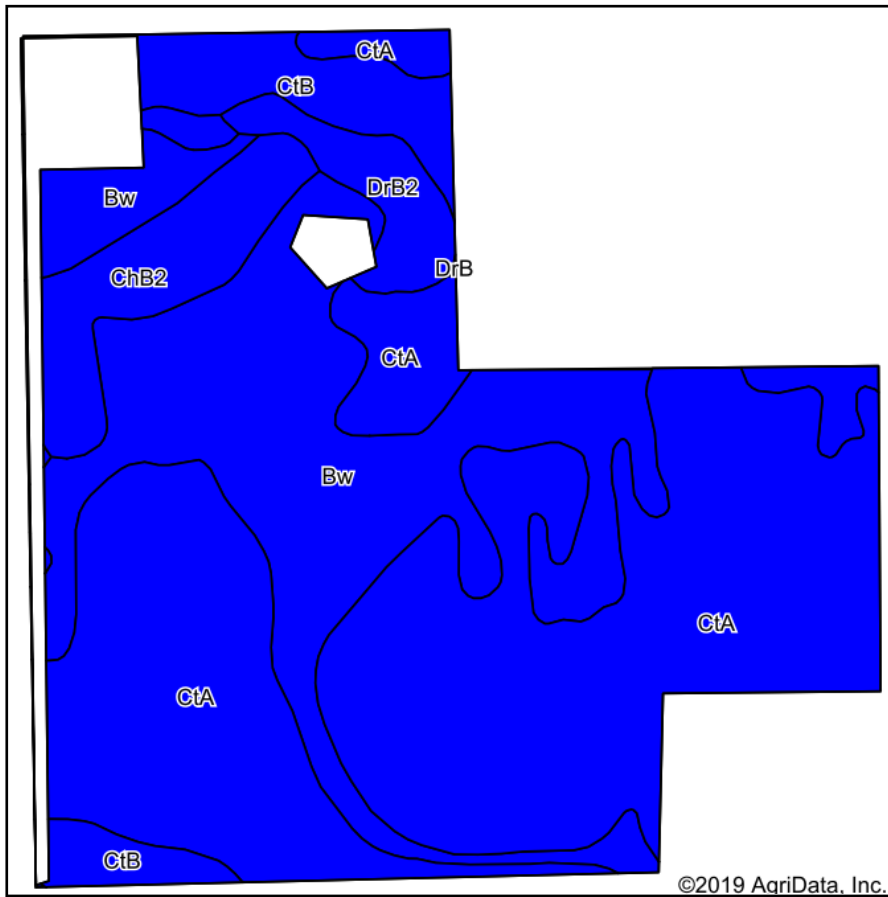
Maps Provided By:



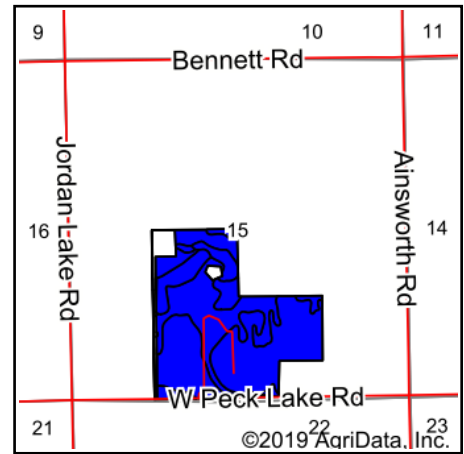
Archived Soils Ending 1/21/2012											
Code	Soil Description	Acres	Percent of field	Non-Irr Class Legend	Water Table	Restrictive Layer	Soil Drainage	Non-Irr Class *c	Corn	Soybeans	Winter wheat
CtA	Conover loam, 0 to 2 percent slopes	27.96	45.5%		1.5ft.	> 6.5ft.	Somewhat poorly drained	IIw	130	40	65
Bw	Brookston loam	15.84	25.8%		0ft.	> 6.5ft.	Very poorly drained	IIw	145	51	65
MwB	Miami-Owosso sandy loams, 2 to 6 percent slopes	4.11	6.7%		> 6.5ft.	> 6.5ft.	Well drained	Ile	110	38	50
MsA	Metamora sandy loam, 0 to 2 percent slopes	4.10	6.7%		1.5ft.	> 6.5ft.	Somewhat poorly drained	IIw	125	40	60
MuB2	Miami loam, 2 to 6 percent slopes, moderately eroded	3.85	6.3%		> 6.5ft.	> 6.5ft.	Well drained	Ile	105	37	47
CtB	Conover loam, 2 to 6 percent slopes	3.52	5.7%		1.5ft.	> 6.5ft.	Somewhat poorly drained	Ile	120	36	60
MwB2	Miami-Owosso sandy loams, 2 to 6 percent slopes, moderately eroded	2.02	3.3%		> 6.5ft.	> 6.5ft.	Well drained	Ile	105	37	47
Weighted Average									129.2	42.2	61.7

*c: Using Capabilities Class Dominant Condition Aggregation Method
 Soils data provided by USDA and NRCS.

Soils Map



Soils data provided by USDA and NRCS.



State: **Michigan**
 County: **Ionia**
 Location: **15-6N-7W**
 Township: **Berlin**
 Acres: **112.11**
 Date: **12/27/2019**



Maps Provided By:

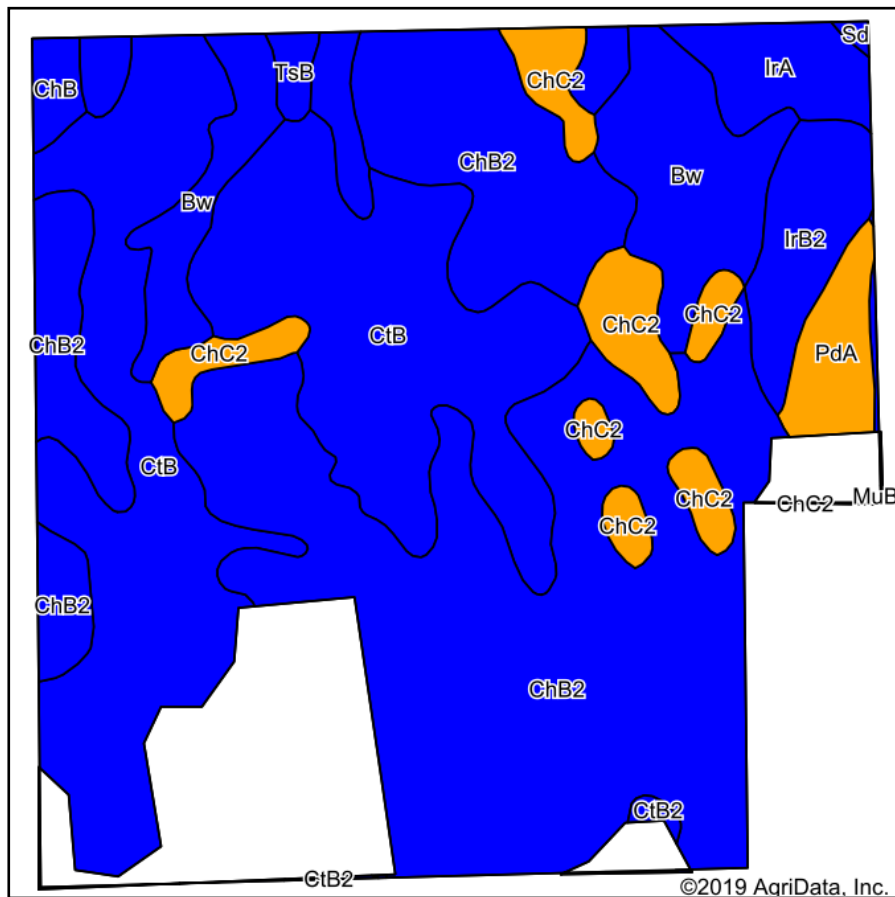


Archived Soils Ending 1/21/2012

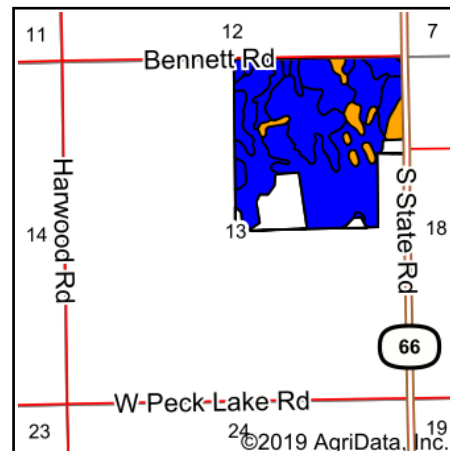
Code	Soil Description	Acres	Percent of field	Non-Irr Class Legend	Water Table	Restrictive Layer	Soil Drainage	Non-Irr Class *c	Corn	Corn Irrigated	Soybeans	Winter wheat
CtA	Conover loam, 0 to 2 percent slopes	61.07	54.5%		1.5ft.	> 6.5ft.	Somewhat poorly drained	Ilw	130		40	65
Bw	Brookston loam	32.74	29.2%		0ft.	> 6.5ft.	Very poorly drained	Ilw	145		51	65
ChB2	Celina loam, 2 to 6 percent slopes, moderately eroded	7.42	6.6%		4.2ft.	> 6.5ft.	Well drained	Ile	120	160		60
CtB	Conover loam, 2 to 6 percent slopes	7.22	6.4%		1.5ft.	> 6.5ft.	Somewhat poorly drained	Ile	120		36	60
DrB2	Dryden sandy loam, 2 to 6 percent slopes, moderately eroded	3.66	3.3%		2.5ft.	> 6.5ft.	Moderately well drained	Ile	95		27	45
Weighted Average									131.9	10.6	39.9	63.7

*c: Using Capabilities Class Dominant Condition Aggregation Method
 Soils data provided by USDA and NRCS.

Soils Map



Soils data provided by USDA and NRCS.



State: **Michigan**
 County: **Ionia**
 Location: **13-6N-7W**
 Township: **Berlin**
 Acres: **131.88**
 Date: **12/27/2019**



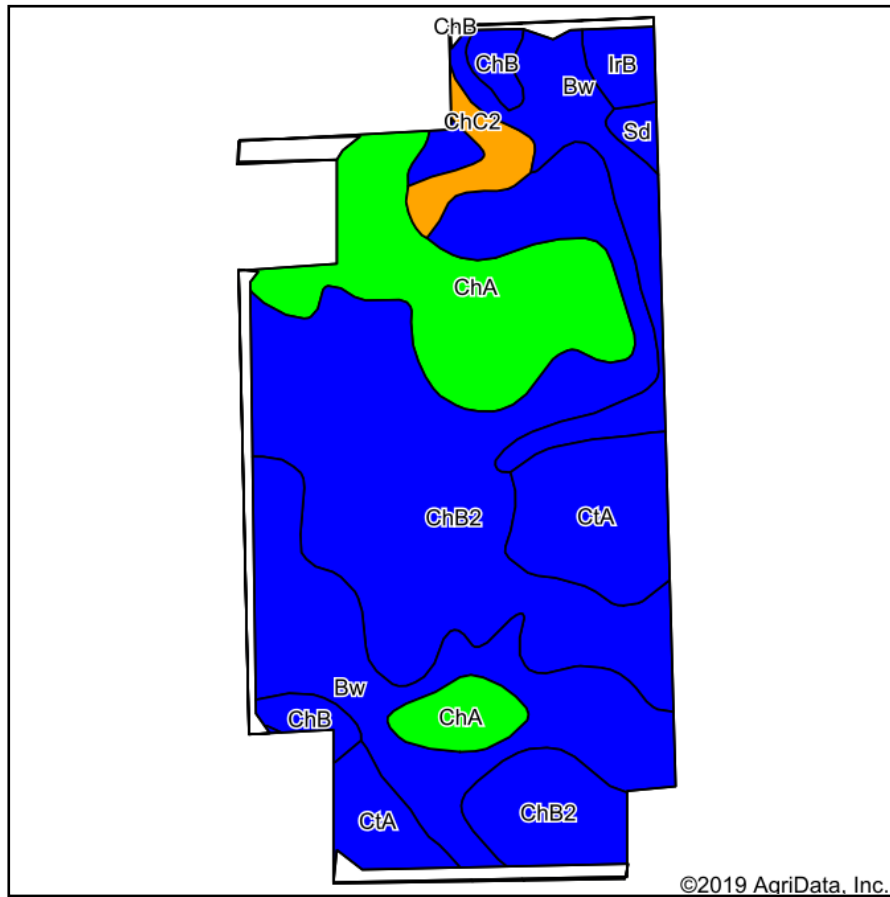
Maps Provided By:
surety
 CUSTOMIZED ONLINE MAPPING
 © AgriData, Inc. 2019 www.AgriDataInc.com



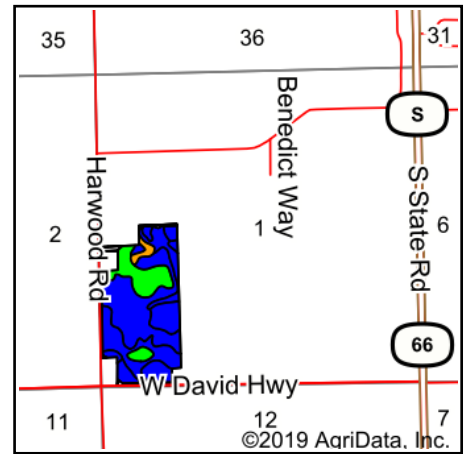
Archived Soils Ending 1/21/2012												
Code	Soil Description	Acres	Percent of field	Non-Irr Class Legend	Water Table	Restrictive Layer	Soil Drainage	Non-Irr Class *c	Corn	Corn Irrigated	Soybeans	Winter wheat
ChB2	Celina loam, 2 to 6 percent slopes, moderately eroded	57.35	43.5%		4.2ft.	> 6.5ft.	Well drained	Ile	120	160		60
CtB	Conover loam, 2 to 6 percent slopes	40.04	30.4%		1.5ft.	> 6.5ft.	Somewhat poorly drained	Ile	120		36	60
Bw	Brookston loam	13.36	10.1%		0ft.	> 6.5ft.	Very poorly drained	Ilw	145		51	65
ChC2	Celina loam, 6 to 12 percent slopes, moderately eroded	7.49	5.7%		> 6.5ft.	> 6.5ft.	Well drained	Ille	110	150		56
IrB2	Ionia sandy loam, 2 to 6 percent slopes, moderately eroded	4.61	3.5%		2.5ft.	> 6.5ft.	Moderately well drained	Ile	100		25	43
IrA	Ionia sandy loam, 0 to 2 percent slopes	3.78	2.9%		2.5ft.	> 6.5ft.	Moderately well drained	Ils	105		30	48
PdA	Perrin loamy sand, 0 to 2 percent slopes	2.94	2.2%		2.7ft.	> 6.5ft.	Moderately well drained	Ills	80		28	35
ChB	Celina loam, 2 to 6 percent slopes	1.08	0.8%		4.2ft.	> 6.5ft.	Well drained	Ile	120	160		60
TsB	Tuscola soils, 2 to 6 percent slopes	0.73	0.6%		2.7ft.	> 6.5ft.	Moderately well drained	Ile	100		32	47
CtB2	Conover loam, 2 to 6 percent slopes, moderately eroded	0.34	0.3%		1.5ft.	> 6.5ft.	Somewhat poorly drained	Ile	120		36	60
Sd	Sebewa loam	0.16	0.1%		0ft.	> 6.5ft.	Poorly drained	Ilw	115		36	55
Weighted Average									119.8	79.4	18.8	58.7

*c: Using Capabilities Class Dominant Condition Aggregation Method
 Soils data provided by USDA and NRCS.

Soils Map



Soils data provided by USDA and NRCS.



State: **Michigan**
 County: **Ionia**
 Location: **1-6N-7W**
 Township: **Berlin**
 Acres: **65.14**
 Date: **12/27/2019**



Maps Provided By:
surety
 CUSTOMIZED ONLINE MAPPING
 © AgriData, Inc. 2019 www.AgriDataInc.com



Archived Soils Ending 1/21/2012												
Code	Soil Description	Acres	Percent of field	Non-Irr Class Legend	Water Table	Restrictive Layer	Soil Drainage	Non-Irr Class *c	Corn	Corn Irrigated	Soybeans	Winter wheat
ChB2	Celina loam, 2 to 6 percent slopes, moderately eroded	26.57	40.8%		4.2ft.	> 6.5ft.	Well drained	Ile	120	160		60
Bw	Brookston loam	15.80	24.3%		0ft.	> 6.5ft.	Very poorly drained	Ilw	145		51	65
ChA	Celina loam, 0 to 2 percent slopes	11.25	17.3%		4.2ft.	> 6.5ft.	Well drained	Iw	125	160		62
CtA	Conover loam, 0 to 2 percent slopes	6.88	10.6%		1.5ft.	> 6.5ft.	Somewhat poorly drained	Ilw	130		40	65
ChC2	Celina loam, 6 to 12 percent slopes, moderately eroded	1.57	2.4%		> 6.5ft.	> 6.5ft.	Well drained	IIIle	110	150		56
ChB	Celina loam, 2 to 6 percent slopes	1.49	2.3%		4.2ft.	> 6.5ft.	Well drained	Ile	120	160		60
IrB	Ionia sandy loam, 2 to 6 percent slopes	1.09	1.7%		2.5ft.	> 6.5ft.	Moderately well drained	Ile	100		25	43
Sd	Sebewa loam	0.49	0.8%		0ft.	> 6.5ft.	Poorly drained	Ilw	115		36	55
Weighted Average									127.4	100.2	17.3	61.7

*c: Using Capabilities Class Dominant Condition Aggregation Method
 Soils data provided by USDA and NRCS.