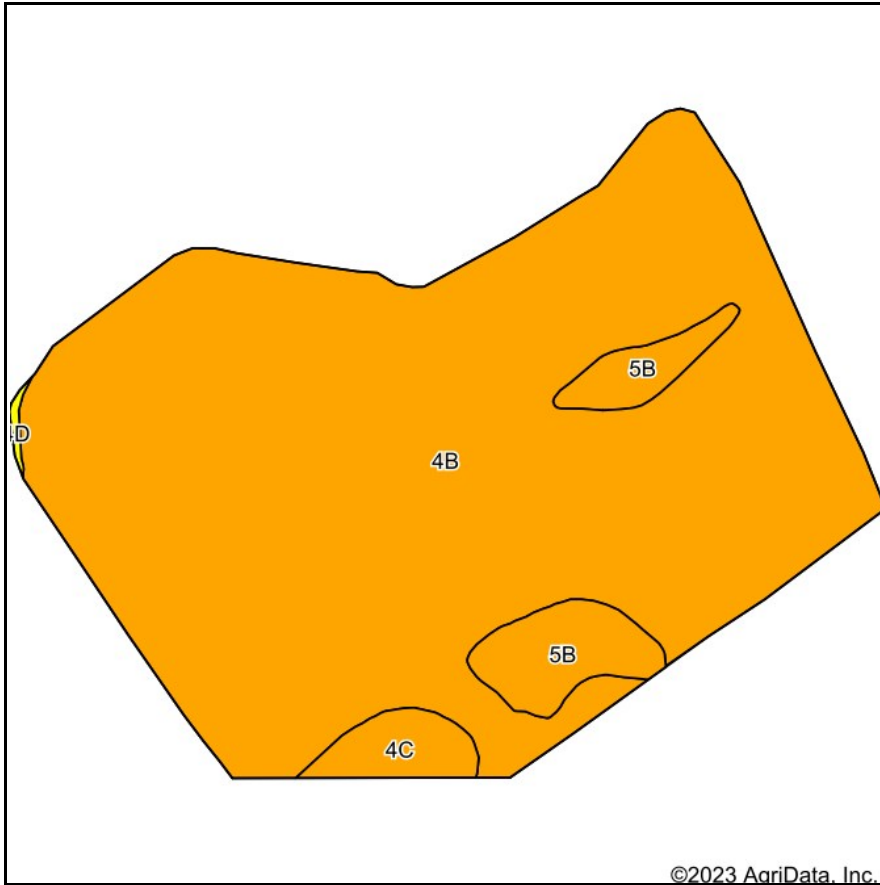
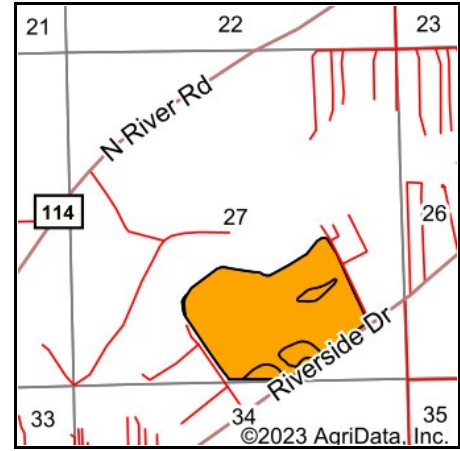


# Soils Map



©2023 AgriData, Inc.

Soils data provided by USDA and NRCS.



State: **Michigan**  
 County: **St. Joseph**  
 Location: **27-7S-12W**  
 Township: **Constantine**  
 Acres: **93.98**  
 Date: **3/28/2023**



Maps Provided By:



© AgriData, Inc. 2023

www.AgriDataInc.com



## Archived Soils Ending 1/21/2012

Code	Soil Description	Acres	Percent of field	Non-Irr Class Legend	Restrictive Layer	Soil Drainage	Non-Irr Class *c	Irr Class *c	Com Bu	Com Irrigated Bu	Soybeans Bu	Soybeans Irrigated Bu	Winter wheat Bu
4B	Oshtemo sandy loam, 0 to 6 percent slopes	85.96	91.5%		> 6.5ft.	Well drained	IIIs	IIle	95	175	30	57	45
5B	Spinks loamy sand, 0 to 6 percent slopes	5.56	5.9%		> 6.5ft.	Well drained	IIIs	IIIs	75	165	27	50	30
4C	Oshtemo sandy loam, 6 to 12 percent slopes	2.30	2.4%		> 6.5ft.	Well drained	IIle	IIle	90	165	26	50	40
4D	Oshtemo sandy loam, 12 to 18 percent slopes	0.16	0.2%		> 6.5ft.	Well drained	IVe		80		21		35
<b>Weighted Average</b>							<b>3.00</b>	<b>*-</b>	<b>93.7</b>	<b>173.9</b>	<b>29.7</b>	<b>56.3</b>	<b>44</b>

\*c: Using Capabilities Class Dominant Condition Aggregation Method

\*- Irr Class weighted average cannot be calculated on the current soils data due to missing data.