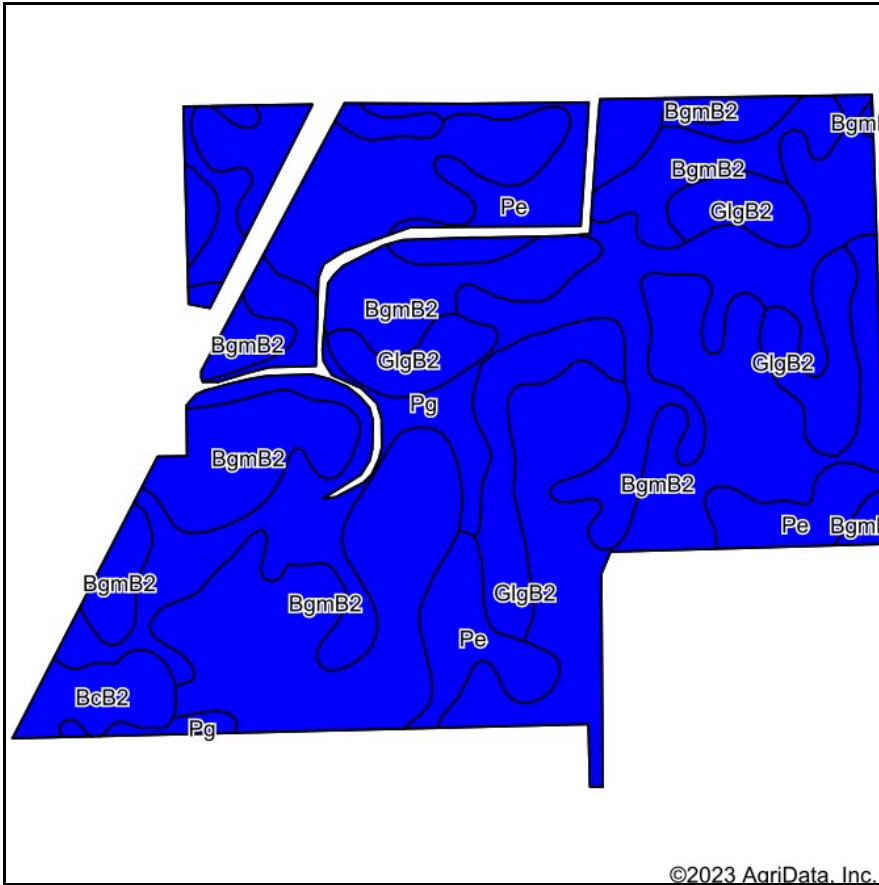
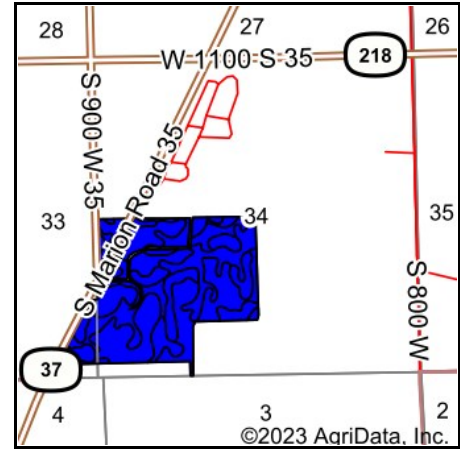


Soils Map



Soils data provided by USDA and NRCS.



State: **Indiana**
 County: **Huntington**
 Location: **34-26N-8E**
 Township: **Wayne**
 Acres: **132.69**
 Date: **3/21/2023**



Maps Provided By:



© AgriData, Inc. 2023

www.AgriDataInc.com



Area Symbol: IN069, Soil Area Version: 26

Code	Soil Description	Acres	Percent of field	Non-Irr Class Legend	Water Table	Restrictive Layer	Soil Drainage	Non-Irr Class *c	Corn Bu	Soybeans Bu	Winter wheat Bu	*n NCCPI Corn	*n NCCPI Soybeans
BgmB2	Blount silt loam, ground moraine, 1 to 4 percent slopes, eroded	70.63	53.2%		0.7ft.	2.5ft. (Densic material)	Somewhat poorly drained	lle	137	44	61	57	38
Pg	Pewamo silty clay loam, 0 to 1 percent slopes	31.49	23.7%		0.5ft.	> 6.5ft.	Very poorly drained	llw	157	47	64	75	66
GlgB2	Glynwood silt loam, ground moraine, 1 to 4 percent slopes, eroded	14.12	10.6%		1.5ft.	2.4ft. (Densic material)	Moderately well drained	lle	123	42	55	55	38
Pe	Patton silty clay loam, sandy substratum	13.24	10.0%		0.5ft.	> 6.5ft.	Poorly drained	llw	175	49	70	86	80
BcB2	Blount loam, interlobate moraines, 1 to 4 percent slopes, eroded	3.21	2.4%		0.7ft.	2.9ft. (Densic material)	Somewhat poorly drained	lle	137	50	54	60	45
Weighted Average								2.00	144	45.1	61.8	*n 64	*n 49

*n: The aggregation method is "Weighted Average using all components"

*c: Using Capabilities Class Dominant Condition Aggregation Method

Soils data provided by USDA and NRCS.