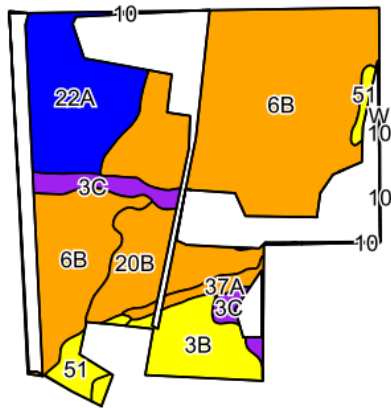
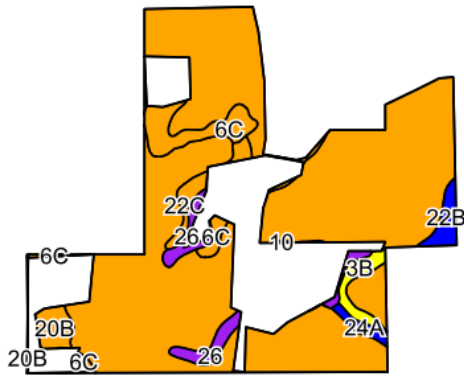
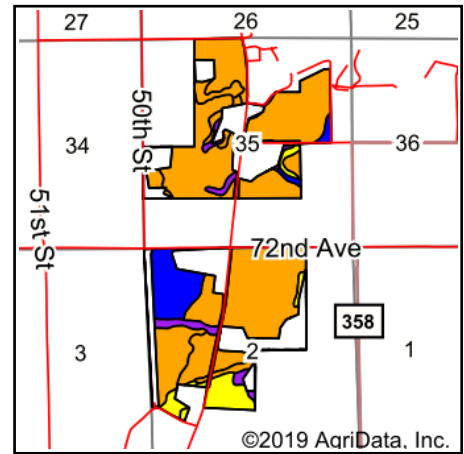


Soils Map



©2019 AgriData, Inc.

Soils data provided by USDA and NRCS.



State: **Michigan**
 County: **Van Buren**
 Location: **35-3S-15W**
 Township: **Lawrence**
 Acres: **460.14**
 Date: **4/2/2020**



Maps Provided By:



Archived Soils Ending 1/21/2012

Cod e	Soil Description	Acres	Percent of field	Non-Irr Class Legend	Water Table	Restrictive Layer	Soil Drainage	Non-Irr Class *c	Irr Class *c	Cor n	Corn Irrigated	Soybeans	Soybeans Irrigated	Winter wheat
6B	Oshtemo sandy loam, 0 to 6 percent slopes	315.37	68.5%		> 6.5ft.	> 6.5ft.	Well drained	IIIls	IIIe	95	175	30	57	45
22A	Kalamazoo loam, 0 to 2 percent slopes	38.60	8.4%		> 6.5ft.	> 6.5ft.	Well drained	IIls	IIls	100	175	30	55	40
20B	Spinks loamy sand, 0 to 6 percent slopes	30.14	6.6%		0ft.	> 6.5ft.	Well drained	IIIls	IIIls	75	165	27	50	30
3B	Coloma loamy sand, 0 to 6 percent slopes	24.63	5.4%		> 6.5ft.	> 6.5ft.	Excessively drained	IVs	IIIe	45	170	18	55	
3C	Coloma loamy sand, 6 to 12 percent slopes	11.09	2.4%		> 6.5ft.	> 6.5ft.	Excessively drained	VIls						
6C	Oshtemo sandy loam, 6 to 12 percent slopes	10.79	2.3%		> 6.5ft.	> 6.5ft.	Well drained	IIIe	IIIe	90	165	26	50	40
51	Kingsville loamy sand	8.45	1.8%		0ft.	> 6.5ft.	Poorly drained	IVw		75		25		30
26	Gilford sandy loam	6.70	1.5%		0ft.	> 6.5ft.	Very poorly drained	Vw						
37A	Thetford loamy sand, 0 to 2 percent slopes	5.06	1.1%		1.5ft.	> 6.5ft.	Somewhat poorly drained	IIIw		85	148	32		35
22C	Kalamazoo loam, 6 to 12 percent slopes	3.82	0.8%		> 6.5ft.	> 6.5ft.	Well drained	IIIe		85		27		38
22B	Kalamazoo loam, 2 to 6 percent slopes	3.13	0.7%		> 6.5ft.	> 6.5ft.	Well drained	Ile	Ile	95	175	30	55	40

24A	Bronson sandy loam, 0 to 3 percent slopes	1.78	0.4%		0.5ft.	> 6.5ft.	Moderately well drained	Ils	Ils	100	170	30	55	40
10	Aquents and Histosols, ponded	0.58	0.1%		0ft.	> 6.5ft.	Very poorly drained	Vlw						
Weighted Average										87	161.9	27.8	51.7	38.8

*c: Using Capabilities Class Dominant Condition Aggregation Method
Soils data provided by USDA and NRCS.