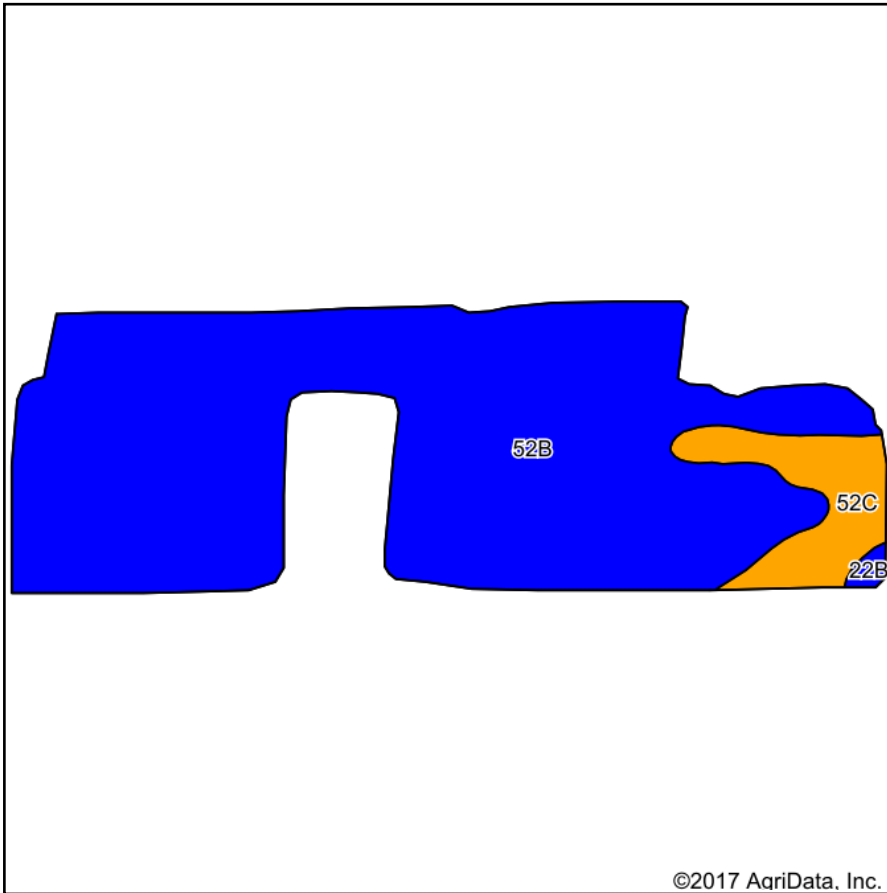
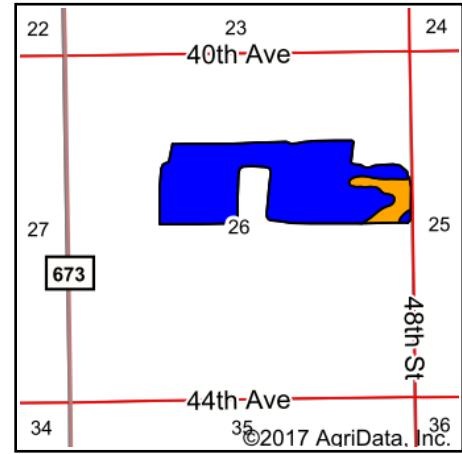


# Soils Map



Soils data provided by USDA and NRCS.

©2017 AgriData, Inc.



State: **Michigan**  
 County: **Van Buren**  
 Location: **26-2S-15W**  
 Township: **Arlington**  
 Acres: **89.11**  
 Date: **10/31/2017**



Maps Provided By:



© AgriData, Inc. 2017

www.AgrIDataInc.com



## Area Symbol: MI159, Soil Area Version: 12

Code	Soil Description	Acres	Percent of field	Non-Irr Class Legend	Soil Drainage	Non-Irr Class *c	Irr Class *c	Corn	Corn silage	Soybeans	Winter wheat
52B	Riddles sandy loam, 1 to 6 percent slopes	80.78	90.7%		Well drained	Ile		110	20	38	50
52C	Riddles sandy loam, 6 to 12 percent slopes	7.82	8.8%		Well drained	IIle		105	19	37	47
22B	Kalamazoo loam, 2 to 6 percent slopes	0.51	0.6%		Well drained	Ile	Ile				
<b>Weighted Average</b>								<b>108.9</b>	<b>19.8</b>	<b>37.7</b>	<b>49.5</b>

\*c: Using Capabilities Class Dominant Condition Aggregation Method

Soils data provided by USDA and NRCS.