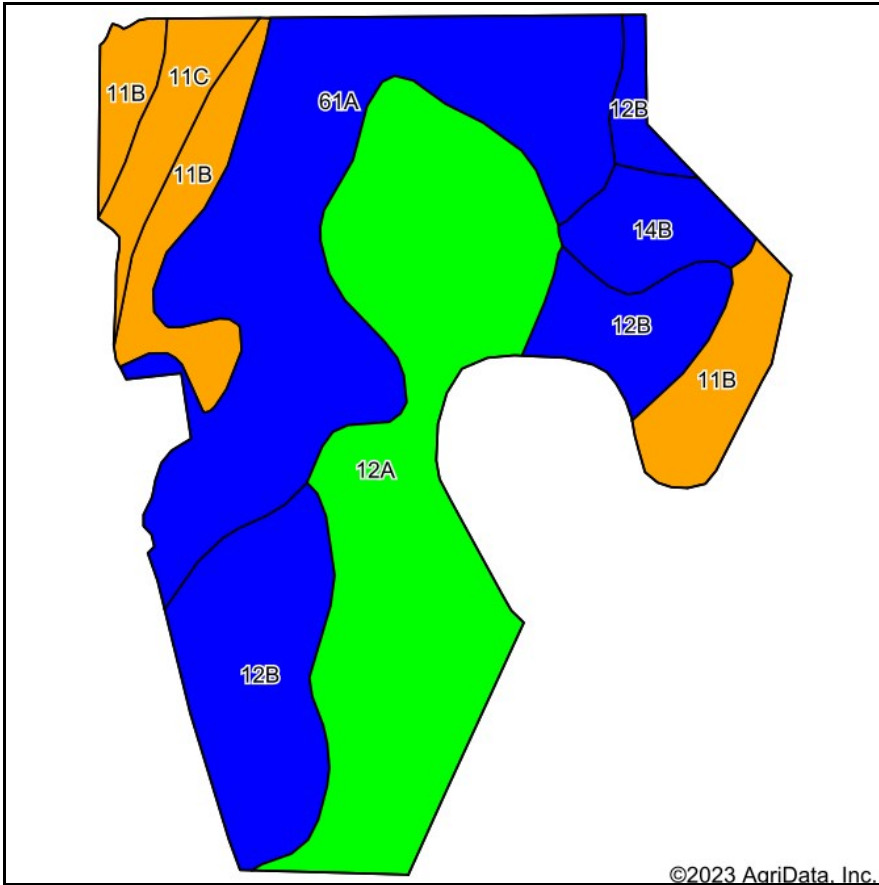
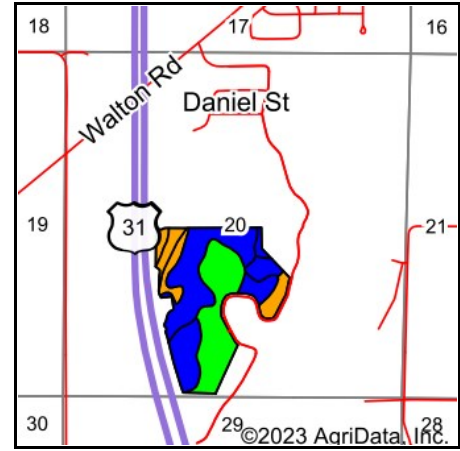


Soils Map



Soils data provided by USDA and NRCS.



State: **Michigan**
 County: **Berrien**
 Location: **20-7S-17W**
 Township: **Niles**
 Acres: **73.3**
 Date: **12/26/2023**



Maps Provided By:



© AgriData, Inc. 2023

www.AgriDataInc.com



Area Symbol: MI021, Soil Area Version: 18

Code	Soil Description	Acres	Percent of field	Non-Irr Class Legend	Non-Irr Class *c	Irr Class *c	Corn Bu	Corn silage Tons	Soybeans Bu	*n NCCPI Corn	*n NCCPI Soybeans
12A	Ockley loam, 0 to 2 percent slopes	23.57	32.2%		Iw		110		38	72	57
61A	Whitaker loam, 0 to 2 percent slopes	21.66	29.5%		IIw		125		44	84	84
12B	Ockley loam, 2 to 6 percent slopes	13.51	18.4%		Ile		110		38	71	56
11B	Oshtemo sandy loam, 0 to 6 percent slopes	8.73	11.9%		IIIs	IIIs				64	42
14B	Riddles loam, 2 to 6 percent slopes	3.16	4.3%		Ile		110	20	38	72	60
11C	Oshtemo sandy loam, 6 to 12 percent slopes	2.67	3.6%		IIle	IIle				62	41
Weighted Average					1.83	*-	97.3	0.9	33.9	*n 74	*n 62.6

*n: The aggregation method is "Weighted Average using all components"

*c: Using Capabilities Class Dominant Condition Aggregation Method

*- Irr Class weighted average cannot be calculated on the current soils data due to missing data.