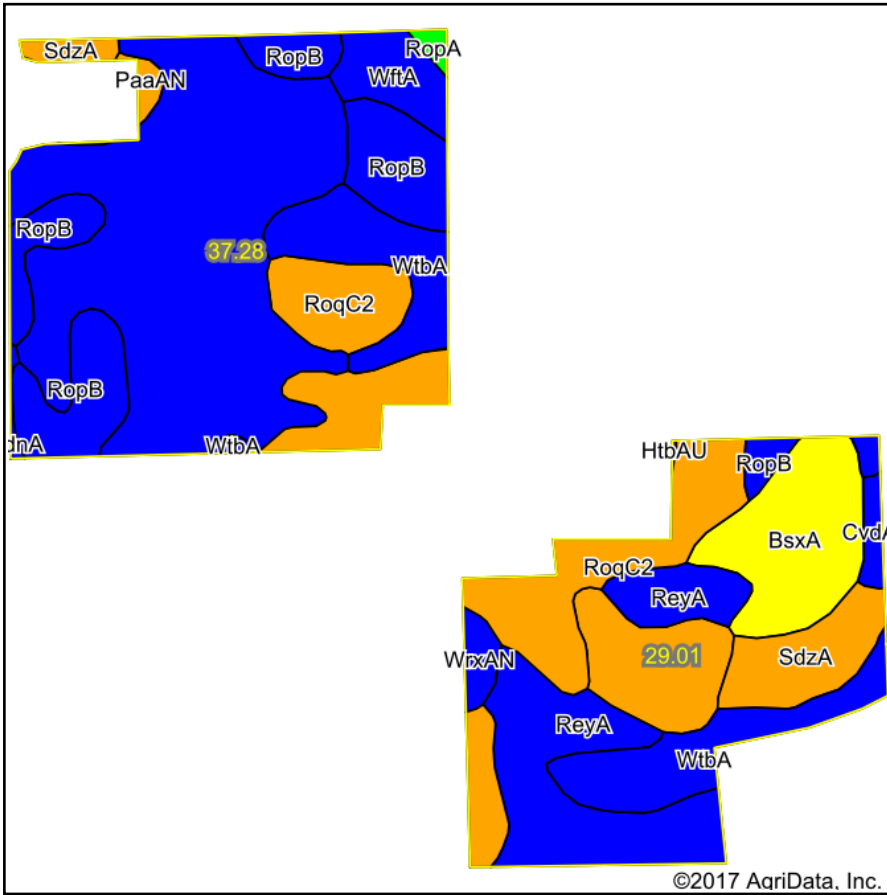
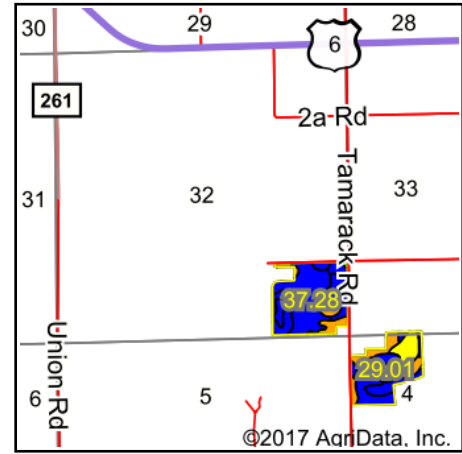


# Soils Map



Soils data provided by USDA and NRCS.



State: **Indiana**  
 County: **Marshall**  
 Location: **5-34N-1E**  
 Township: **Polk**  
 Acres: **66.29**  
 Date: **8/30/2017**



## Area Symbol: IN099, Soil Area Version: 19

Code	Soil Description	Acres	Percent of field	Non-Irr Class Legend	Water Table	Soil Drainage	Non-Irr Class *c	Corn	Soybeans	Winter wheat	Corn silage
ReyA	Rensselaer loam, 0 to 1 percent slopes	27.09	40.9%		0.7ft.	Poorly drained	IIw	172	48	69	
RoqC2	Riddles-Metea complex, 5 to 10 percent slopes, eroded	10.29	15.5%		> 6.5ft.	Well drained	IIIe	114	40	57	
RopB	Riddles-Oshtemo fine sandy loams, 1 to 5 percent slopes	7.46	11.3%		> 6.5ft.	Well drained	Ile	125	44	62	
WtbA	Whitaker loam, 0 to 1 percent slopes	6.79	10.2%		1.2ft.	Somewhat poorly drained	IIw	154	50	69	
BsxA	Brems-Morocco loamy sands, 0 to 1 percent slopes	4.88	7.4%		2.5ft.	Moderately well drained	IVs	98	31	44	
RoqB	Riddles-Metea complex, 1 to 5 percent slopes	3.25	4.9%		> 6.5ft.	Well drained	IIIe	128	45	64	
SdzA	Selfridge-Crosier complex, 0 to 1 percent slopes	3.05	4.6%		2ft.	Somewhat poorly drained	IIIw	139	43	63	
WftA	Washtenaw silt loam, 0 to 2 percent slopes	1.74	2.6%		0.2ft.	Poorly drained	IIw	166	49	67	19
WrxAN	Wunabuna silt loam, drained, 0 to 1 percent slopes	0.61	0.9%		0ft.	Very poorly drained	IIw	152	44	61	
CvdA	Crosier loam, 0 to 1 percent slopes	0.48	0.7%		2ft.	Somewhat poorly drained	IIw	154	50	69	
PaaAN	Palms muck, drained, 0 to 1 percent slopes	0.32	0.5%		0.7ft.	Very poorly drained	IIIw	158	43	63	
RopA	Riddles-Oshtemo fine sandy loams, 0 to 1 percent slopes	0.21	0.3%		> 6.5ft.	Well drained	Is	125	44	62	
GdnA	Gilford mucky sandy loam, 0 to 1 percent slopes, gravelly subsoil	0.12	0.2%		0.2ft.	Very poorly drained	IIw	153	43	61	
<b>Weighted Average</b>								<b>146</b>	<b>44.8</b>	<b>63.8</b>	<b>0.5</b>

\*c: Using Capabilities Class Dominant Condition Aggregation Method

Soils data provided by USDA and NRCS.