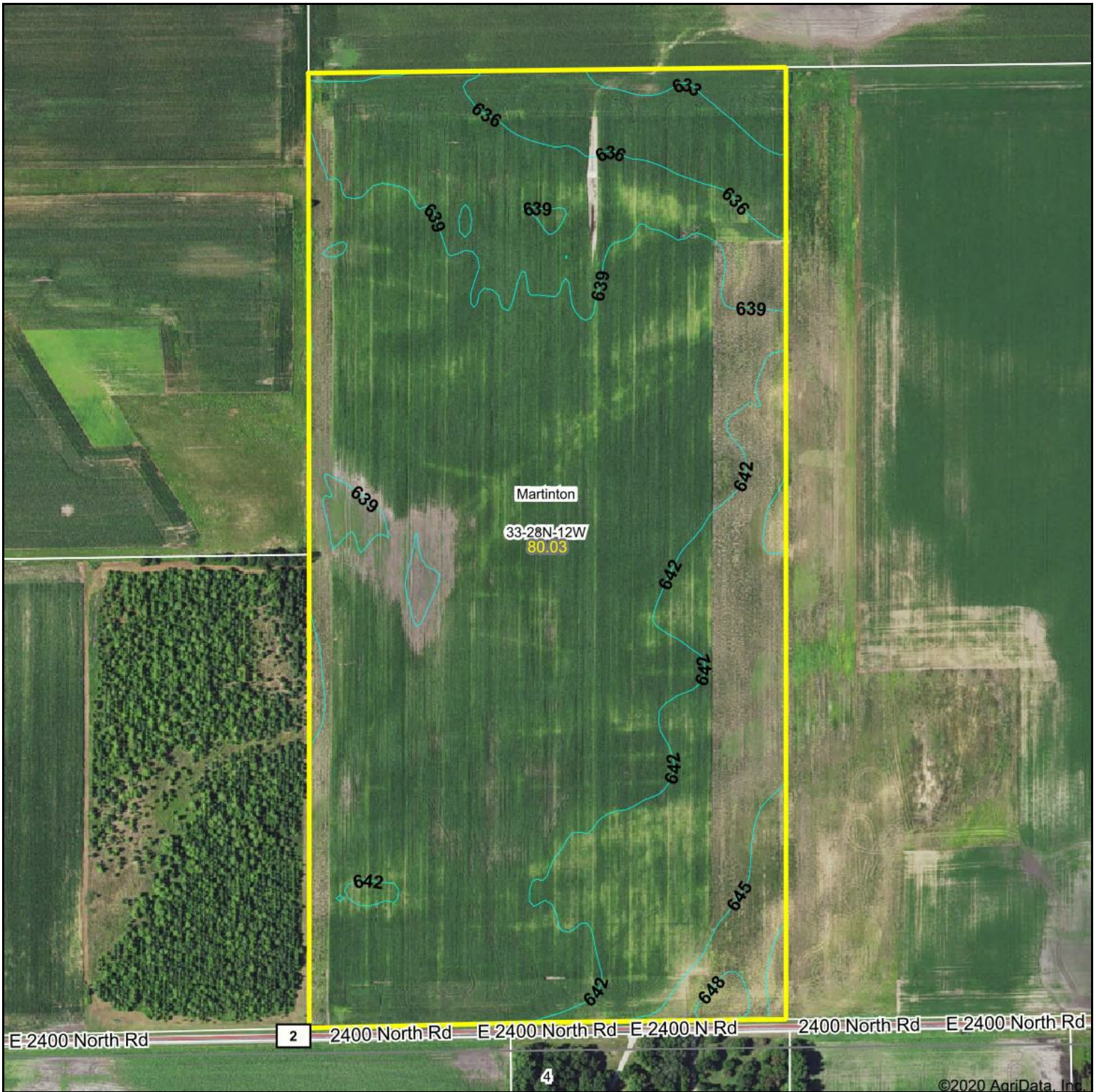


Topography Contours



Maps Provided By:

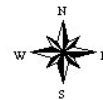


© AgriData, Inc. 2020 www.AgriDataInc.com

Field borders provided by Farm Service Agency as of 5/21/2008.

Source: USGS 10 meter dem
 Interval(ft): 3.0
 Min: 631.1
 Max: 650.5
 Range: 19.4
 Average: 640.3
 Standard Deviation: 2.46 ft

0ft 431ft 863ft



10/14/2020

33-28N-12W
Iroquois County
Illinois

Map Center: 40° 51' 53.6, -87° 43' 9.58

©2020 AgriData, Inc.