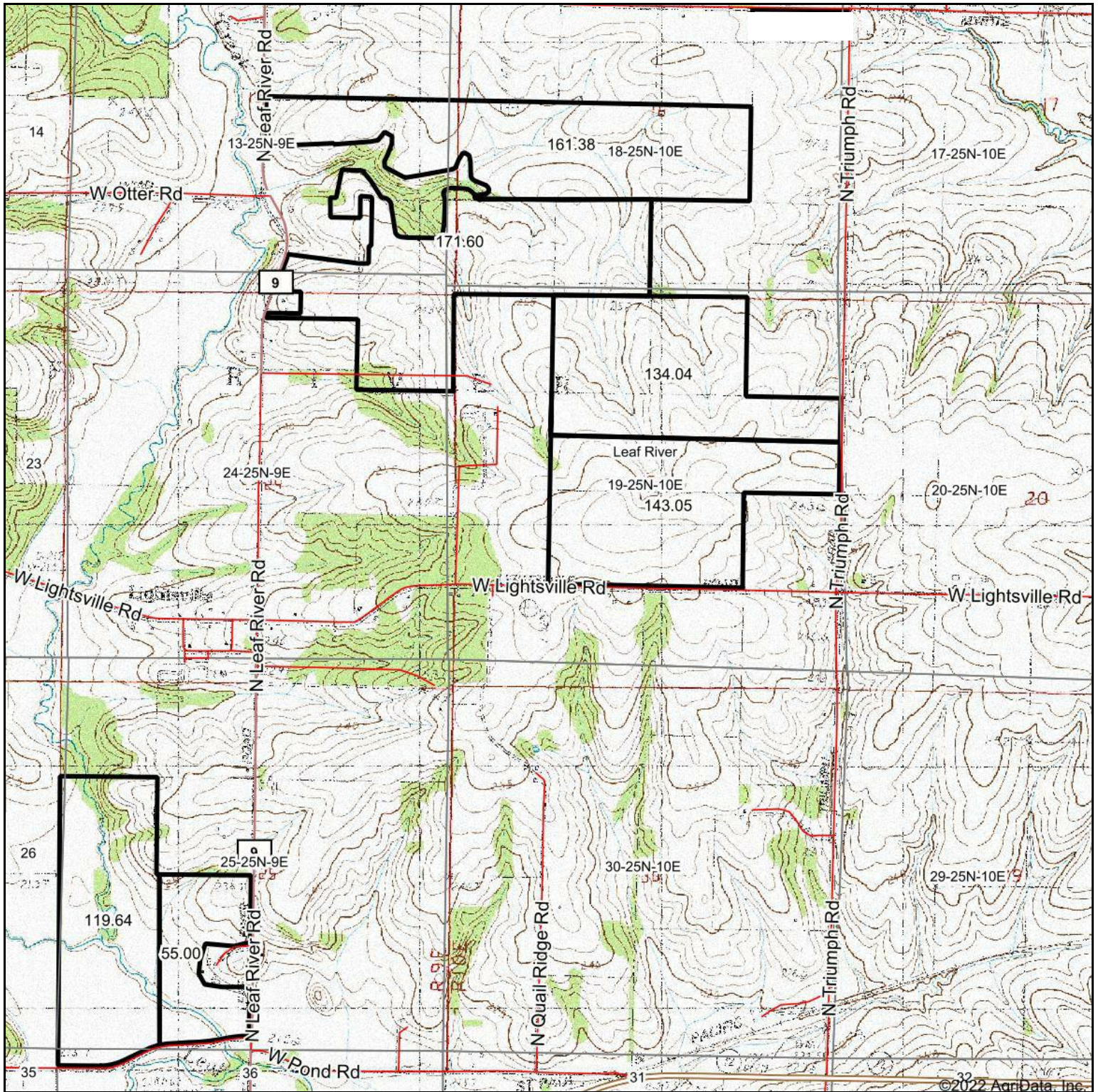
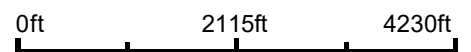


# Topography Map



map center: 42° 8' 57.61, -89° 23' 23.71



**19-25N-10E**  
**Ogle County**  
**Illinois**



8/10/2022



Ceres Partners

Maps Provided By:



CUSTOMIZED ONLINE MAPPING

© AgriData, Inc. 2021

www.AgriDataInc.com

©2022 AgriData, Inc.